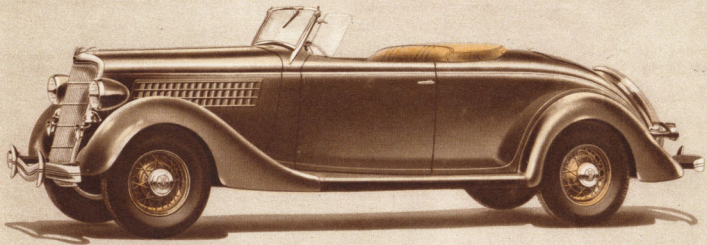


The image is a vintage advertisement for the Ford V-8. It features a dark brown background with a large, light-colored circle in the center. Inside this circle is a smaller, solid yellow circle. Several white and black lines radiate from the yellow circle, creating a sense of motion or speed. The text "FORD V-8 FOR 1935" is printed in a white, sans-serif font at the bottom of the image.

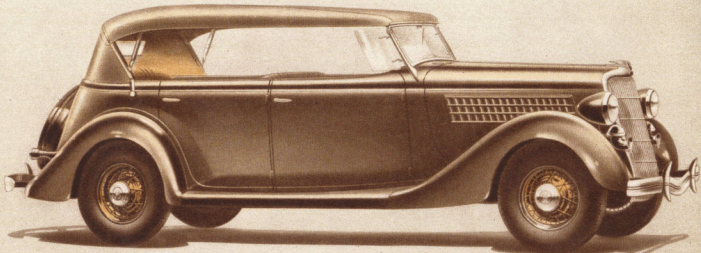
FORD V-8 FOR 1935

THIS ROADSTER SAYS "LET'S GO"



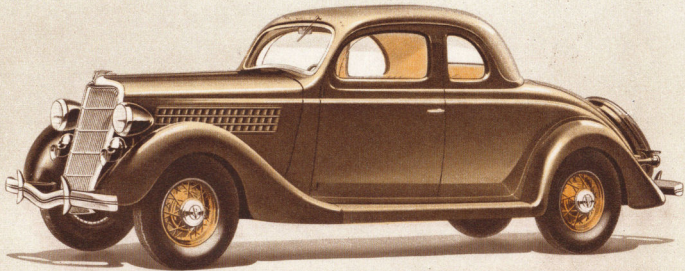
THE NEW FORD DE LUXE ROADSTER WITH RUMBLE SEAT. Driver's seat is upholstered in genuine leather—durable in quality, attractive in appearance, and harmonizing with the modern, youthful spirit of the car. Wide, comfortable rumble seat.

FORD BEAUTY IS LASTING BEAUTY



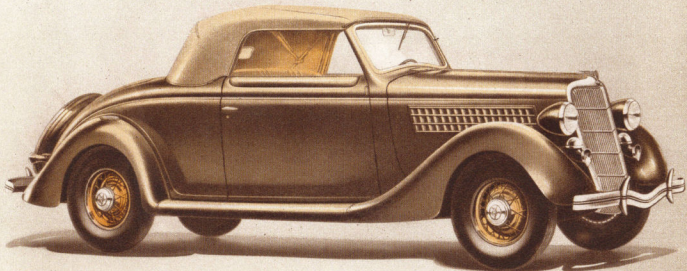
THE NEW FORD DE LUXE PHAETON. An open car with distinctive, modern lines. Like all new Fords, this car has an enamel finish which retains its original luster for years. Top folds back snugly into boot. All four doors open forward. Compartment behind rear seat.

EXTRA PROTECTION OF SAFETY GLASS



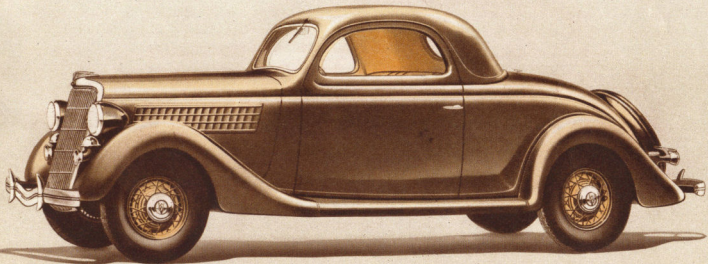
THE NEW FORD DE LUXE COUPE (FIVE WINDOWS). A handsome, popular car. Attractively upholstered. Unusually large rear compartment. This same coupe, without De Luxe features, available at lower cost. Rumble seat optional in both types at extra cost.

NEW EASE OF DRIVING FOR 1935



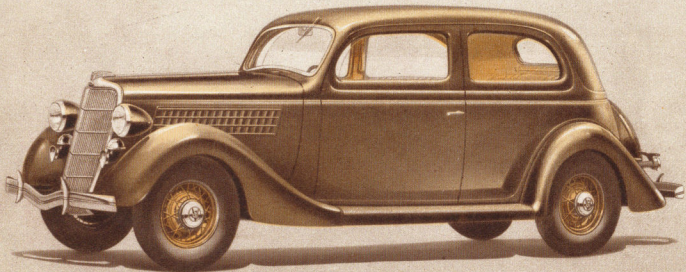
THE NEW FORD CONVERTIBLE CABRIOLET. A rakish, all-weather car. Top folds down neatly into compartment flush with body. Interior upholstery genuine leather or Bedford Cord. Rumble seat. Ease of driving makes the Ford V-8 a splendid choice for the woman motorist.

WIDER ROOMIER FORD MODELS
ALL-WEATHER VENTILATION



THE NEW FORD DE LUXE COUPE (THREE WINDOWS). Wide seat accommodates three comfortably. Beautiful upholstery. Clear-Vision window ventilation. Both windshield and rear window open. Cowl ventilator. Rumble seat optional at extra cost.

D I S T I N C T I V E N E W S T Y L E A N D B E A U T Y



THE NEW FORD DE LUXE TUDOR SEDAN reveals smart, modern styling in every graceful line. All New Ford V-8's are distinguished by their finish and appointments both inside and out. This same car, without De Luxe features, may be obtained at lower cost.



Front seats are from 4 to 5½ inches wider than previous Ford cars and comfortably accommodate three. Gear-shift lever moved further forward. More leg room. Two swivel sun visors furnished in all De Luxe bodies. A car you'll want to drive.

EFFORTLESS DRIVING

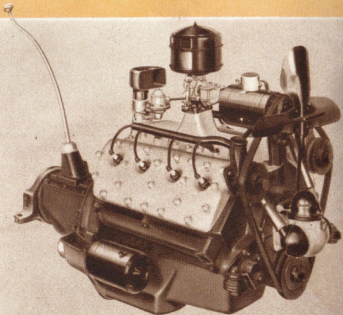
You will find ease of operation an impressive feature of the New Ford.

When shifting gears, a slight touch of the toe on the pedal disengages the clutch. This remarkably "soft" action is the result of the application of a new principle in clutch design. As the engine speeds up, centrifugal force acts to increase clutch pressure and prevent the clutch from slipping.

New brakes are positive in action—instantly responsive to the will of the driver. A floating wedge in the brake-shoe mechanism makes possible quick stopping with little effort on the driver's part. Shoes are self-centering in the drums, distributing brake pressure evenly, and fully utilizing every inch of the exceptionally large braking surface. New cross steering and other chassis improvements provide stabilized, easy control at all speeds.

CENTER-POISE RIDING WITH V-8 POWER

Just as the first Ford V-8 revised all conceptions of power, pick-up and flexibility in low-priced cars, so the Ford V-8 for 1935 brings to this same field a new interpretation of riding smoothness and stability. Coupled with time-proved V-8 performance, Center-Poise redoubles the satisfaction and pleasure of Ford ownership. If the New Ford V-8's offered no other advancements, they would be the finest Fords ever built. But you will find them distinguished by many other noteworthy features. New beauty and style. Roomy and luxurious interiors. Clear-Vision ventilation. Safety Glass throughout. Welded all-steel bodies. Softer clutch action. Easier, more positive braking. Improved steering. Larger tires with greater road contact.



More than a million owners have proved the dependability and economy of the Ford V-8 engine. New "directed-flow" ventilation of the crankcase insures still longer life and greater efficiency.