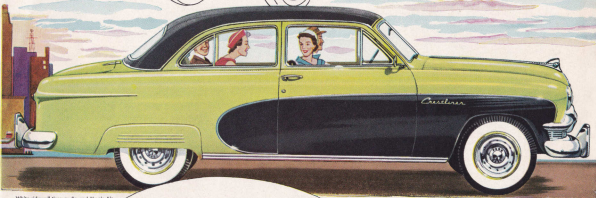
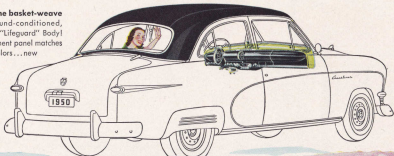


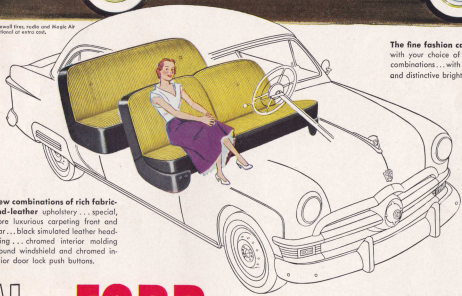
The richness of fine basket-weave vinyl tops its sound-conditioned, heavy-gauge steel "Life-guard" Body! A two-toned instrument panel matches the car's striking colors... new chrome fittings!



White sidewall tires, radio and Right Air heater optional at extra cost.

The fine fashion car of its field... with your choice of smart new color combinations... with new air foil panel and distinctive bright metal trim!

New combinations of rich fabric-and-leather upholstery... special, more luxurious carpeting front and rear... black simulated leather headlining... chromed interior molding around windshield and chromed interior door lock push buttons.



New FORD "Crestliner"

Here's America's newest, smartest car

● Inside and out... it is the foremost note in fashion of the year! And this streamline, streamline beauty has more—much more—than meets the eye! Roomy comfort for six big people! Famous 100 h.p. V-8 engine—the type used in America's costliest cars! King-Size Brakes that work 35% easier! Road-hugging steadiness and ease of steering that makes an all-day drive a real pleasure. You'll see, hear and feel for yourself why Ford is the one fine car in the low-price field.

There's a Ford in your future... with a future built in!

There's a *Ford* in your future
with a future built in



White color-veil film and wheel trim rings available at extra cost.

THE NEW FORD

*"Country
Squire"*
STATION WAGON

So quiet you'll say it whispers while it works. So good looking you can't take your eyes off it. So comfortable that you travel with passenger-car ease. So safe it's a "must" for families with children.

The "Country Squire" is the only station wagon in its field that offers you choice of famous 100 h.p. V-8

or advanced 95 h.p. Six. The mahogany-grained outer panels of all-steel "LifeGuard" Body are trimmed with genuine birch or maple.

"Magic-Action" King-Size Brakes give 33% easier stopping. And this "space-happy" Station Wagon still carries an economy price tag. See your Ford Dealer today!



Everything goes in the new

FORD

"Country Squire"

STATION WAGON

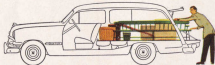
It's the "Double-Duty" Dandy of them all—the new Ford "Country Squire." Here's where Ford's experience in building more station wagons than all other makes combined pays off for you.



Easy removal of rear seat, without use of tools, starts conversion to more flat carrying area than any other station wagon in its class.



New "Stowaway" center seat completes the "Flat Deck" loading platform. You can slide things in "slick as a ballroom floor."



With the "Level-loading" tail gate down, there's 38.8 square feet of flat deck, which handles half a ton of freight with ease.



"We love it..."

for fishing"



"and sports!"

"It's the collector's dream"



"It's the gardener's best friend"



"Plenty of room for eight"

"There's a Ford 'Country Squire' in your future"

"It's a 'Double Duty' Dandy"

