

*"Let's put the top down"*

**TWO NEW CONVERTIBLES**

**BY LINCOLN-ZEPHYR**

"LET'S PUT THE TOP DOWN"



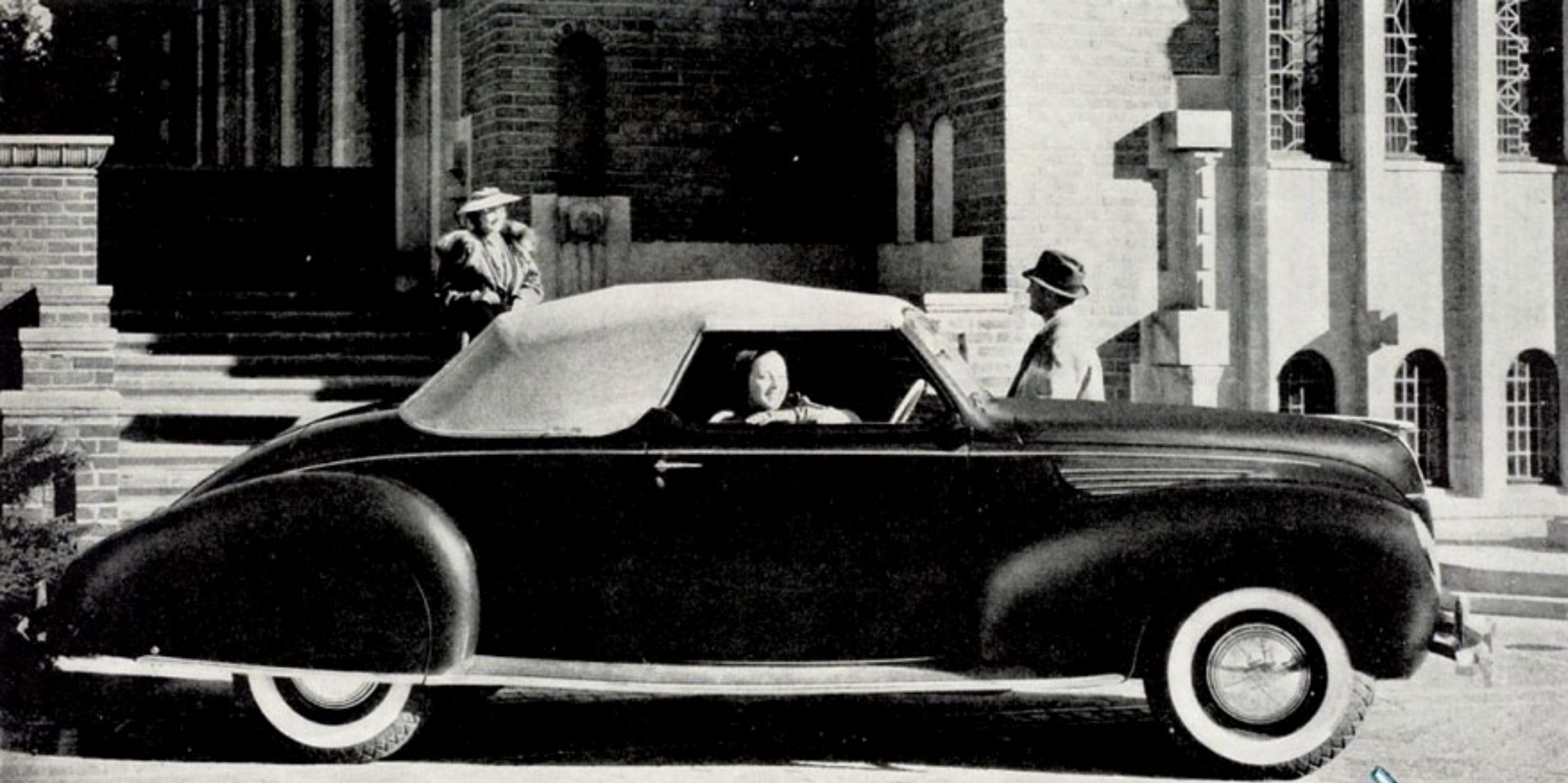
**W**INDING OPEN ROADS and clear days make a good many people resent the roof of any car. They want the wind and sun on their faces and the blue open sky above them. For them, the young in years or the young in spirit, the two new Lincoln-Zephyr convertibles were created.

The new Convertible Sedan and the Convertible Coupe stand out in the whole field of sports cars for 1938. There is nothing usual or ordinary about them. They are the most modern convertibles on the road. They have the basic, clean, sweeping Lincoln-Zephyr lines. They are powered by the Lincoln-Zephyr 12-cylinder V-type engine, which combines great smoothness with great economy—14 to 18 miles to the gallon.

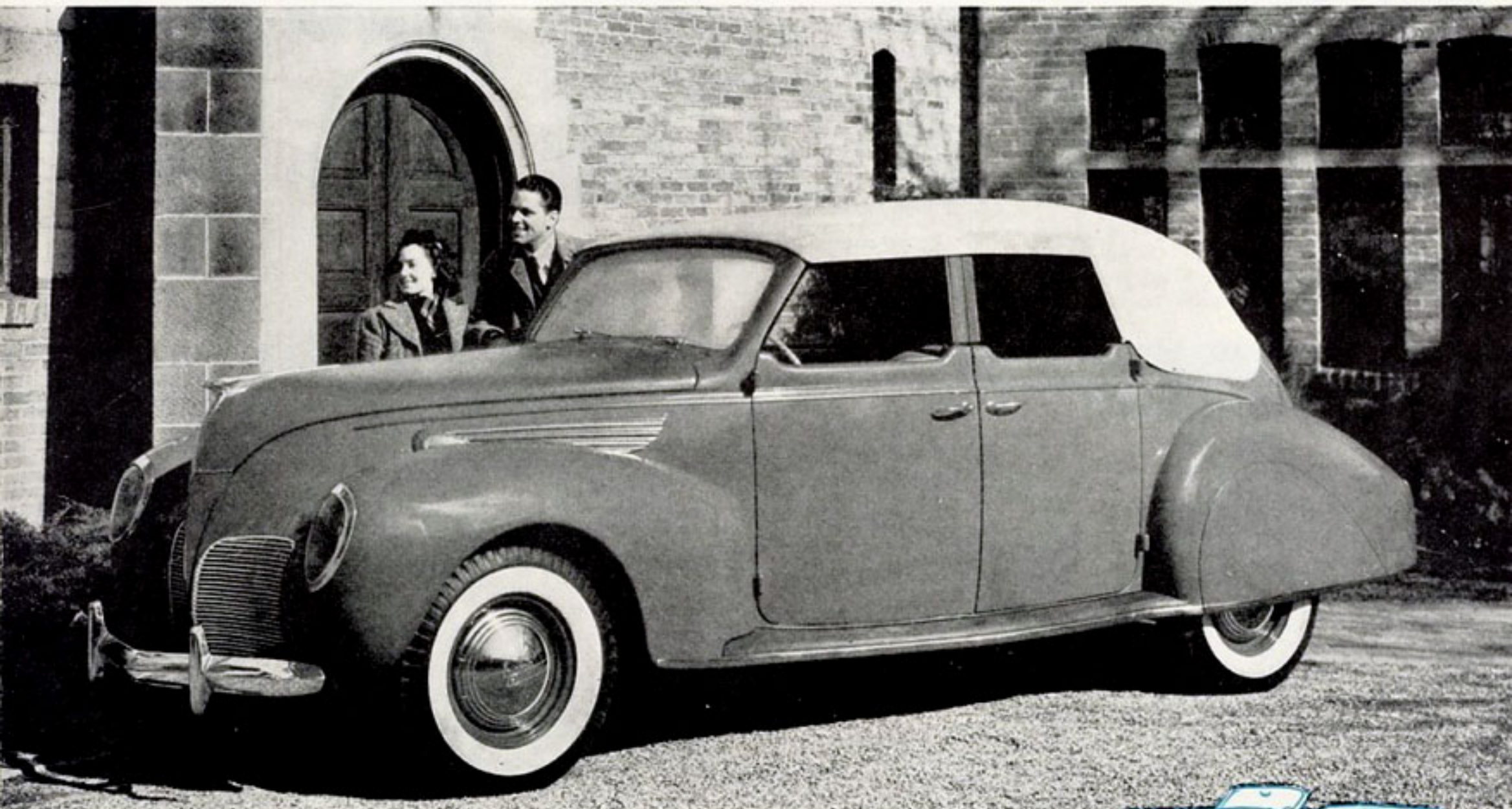
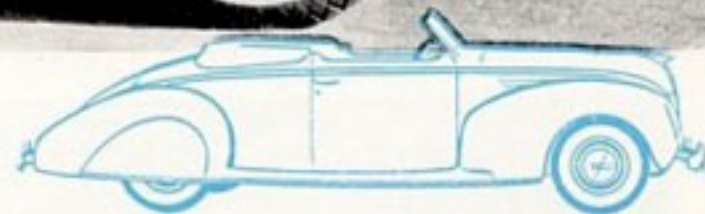
So, let's put the top down. These tops can be lowered or raised by one man (or one woman). In the sedan, compensating springs, concealed in the lining, ease the folding top neatly into place. In both Sedan and Coupe struts and trusses are kept at a minimum to encourage silence. And the tops may be raised again without fuss or strain.

On fine days, these two new Lincoln-Zephyr body types bring the freedom of the open car. On other days they have the snug warmth of sedan or coupe.

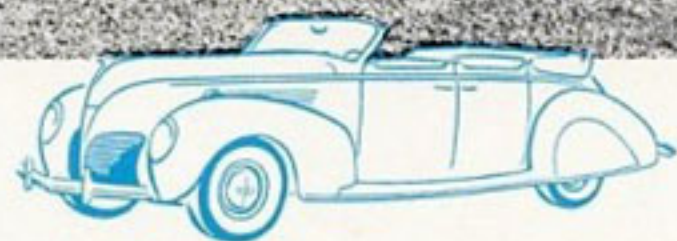
*Our policy is one of continuous improvement, and we reserve the right to change specifications, design, or prices, without incurring obligation. There is an extra charge for white sidewall tires as shown on cars in this folder. Lincoln Motor Company, builders of Lincoln and Lincoln-Zephyr V-12s.*



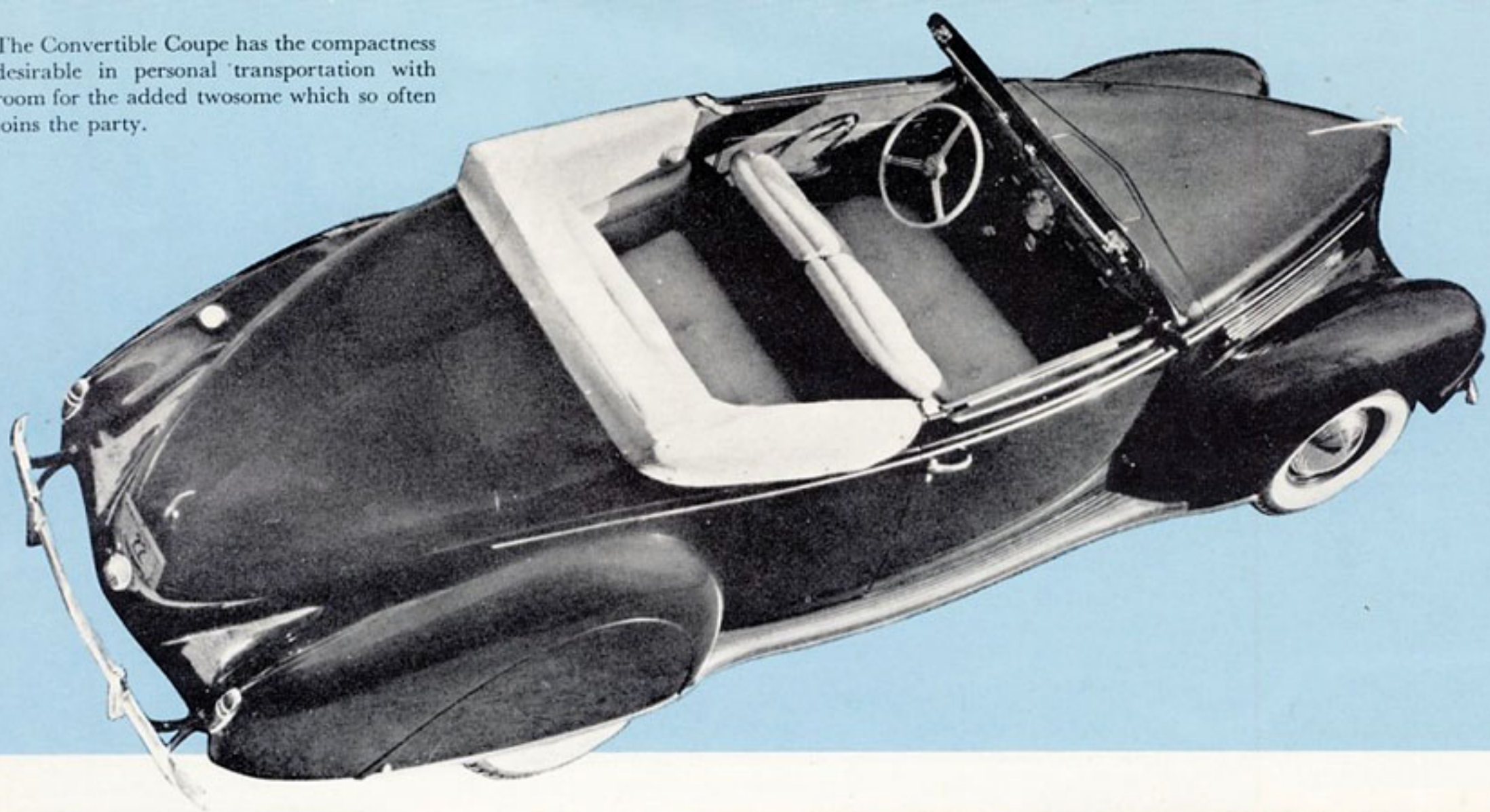
**THE CONVERTIBLE COUPE:** This informal car is jaunty enough for a debutante. Youth at this wheel will be well served. The seat, finely upholstered in leather, is wide enough for three. Behind it there is a second seat, also of leather, for additional members of the party. Whipcord upholstery is optional on seat backs and cushions. The rear deck has generous space for luggage or sports equipment.



**CONVERTIBLE SEDAN:** There is room for six in this new body type. Upholstery is top grain leather, as neatly cut and sewn as an English saddle. Seat backs and cushions may be of whipcord, if desired. There is ample space for luggage in the rear deck. The top, folded neatly into place, accents the long, low sweeping lines that are so typical of the Lincoln-Zephyr.



The Convertible Coupe has the compactness desirable in personal transportation with room for the added twosome which so often joins the party.



No need for luggage under foot in the Convertible Sedan. This compartment carries it. The spare wheel, which is carried here also, swings out of the way to make loading easy.

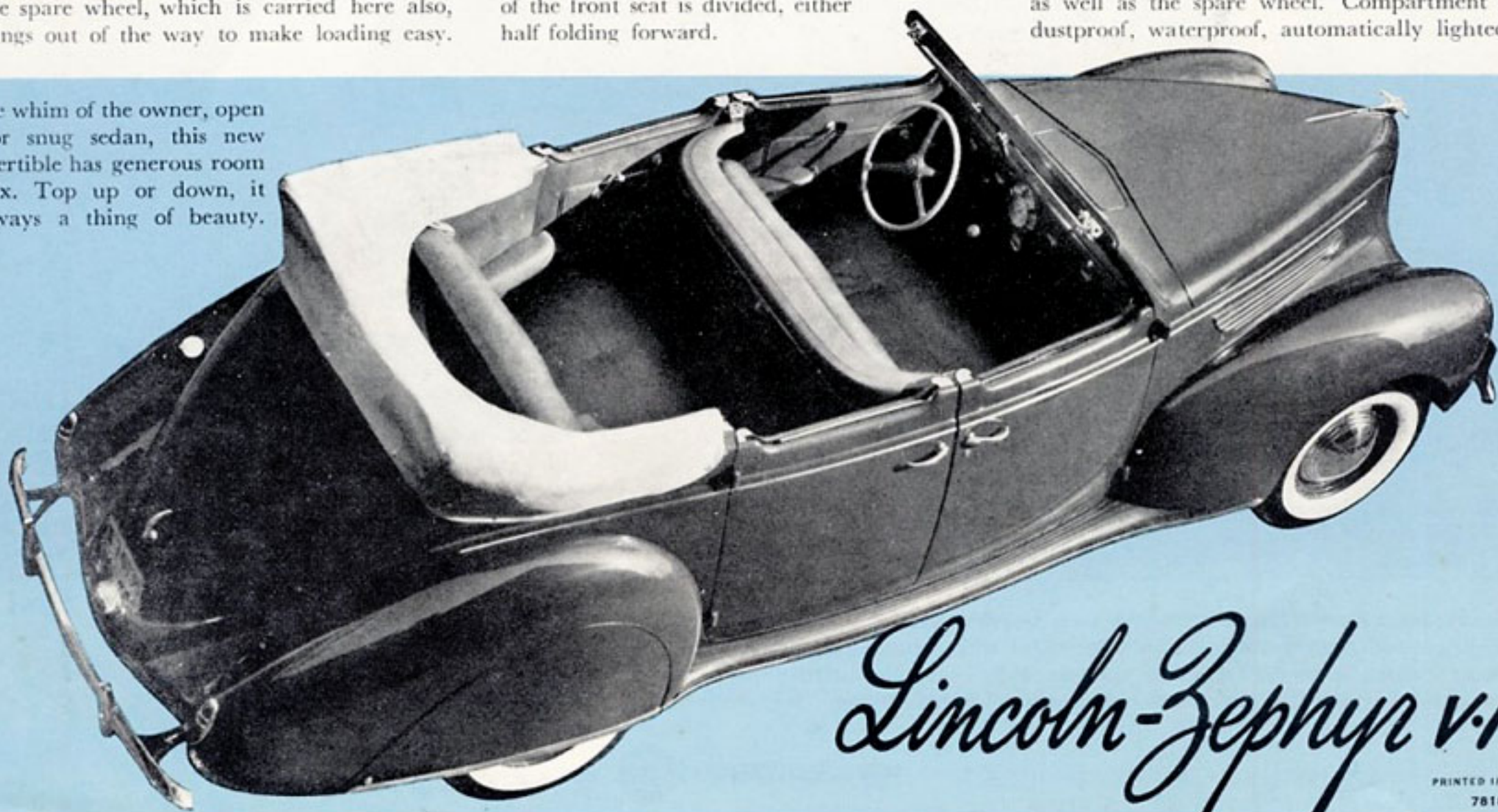


The rear seat of the Convertible Coupe is reached easily through the wide door. The back of the front seat is divided, either half folding forward.



In the rear deck of the Convertible Coupe there is ample room for luggage or sports equipment, as well as the spare wheel. Compartment is dustproof, waterproof, automatically lighted.

At the whim of the owner, open car or snug sedan, this new Convertible has generous room for six. Top up or down, it is always a thing of beauty.



*Lincoln-Zephyr V-12*