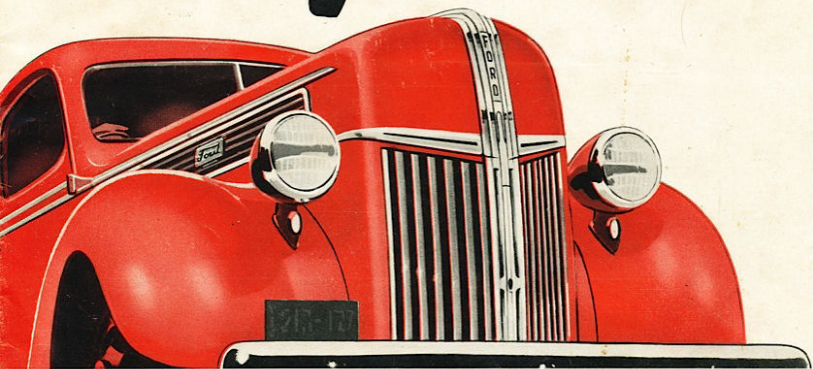


**WHAT DO  
YOU HAUL?**

YOUR SPECIFIC REQUIREMENTS  
FOR COMMERCIAL TRANSPORT  
UNDER WAR CONDITIONS  
CAN BE SUPPLIED AT  
LOWER FIRST COST AND  
LOWER OPERATING COST  
BY

# Ford V-8 Trucks

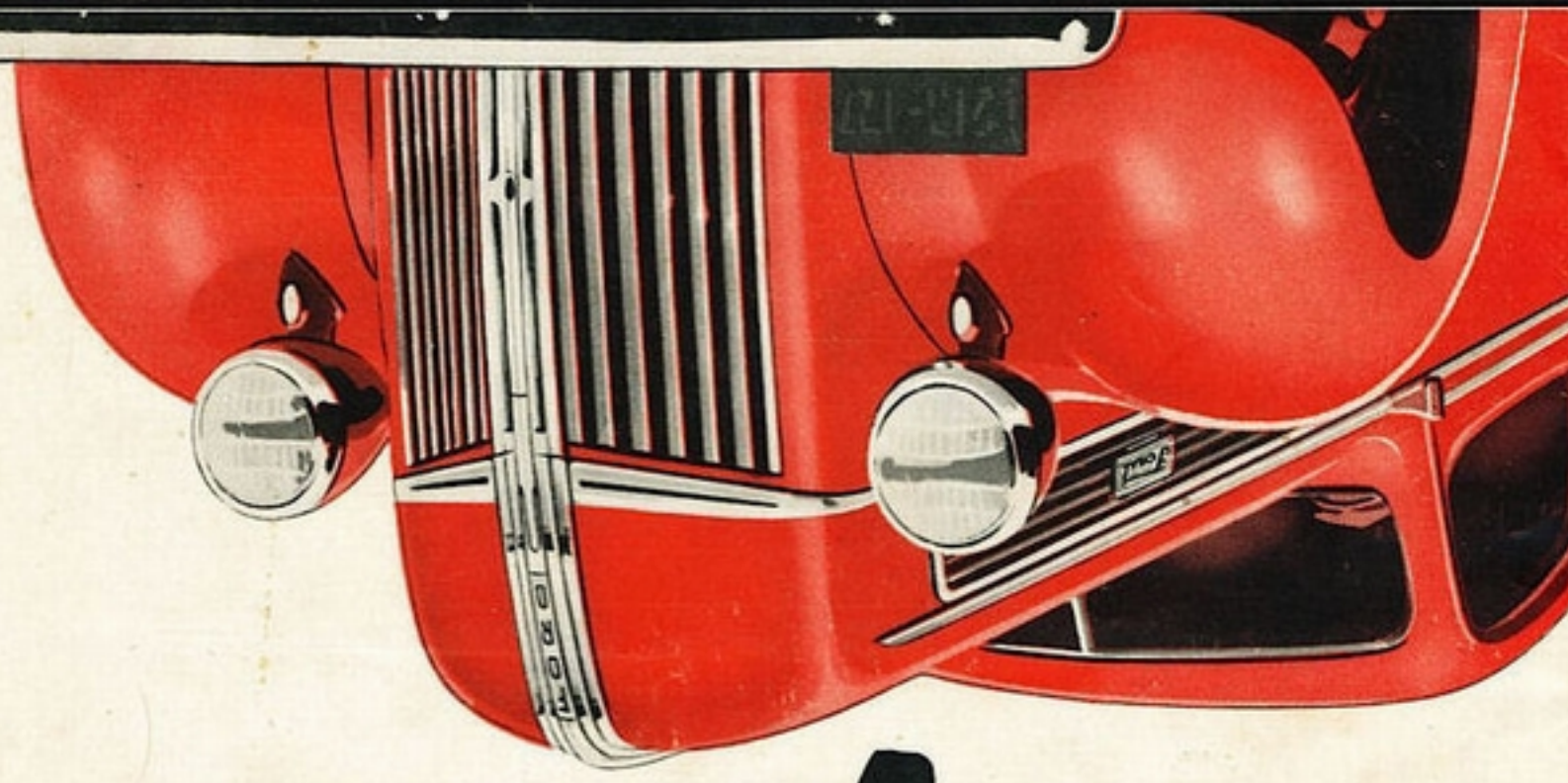


**FORD OFFERS FOR 1941   ★   ★   26 TRUCK  
MODELS • • 8 WHEELBASES (5 REGULAR, 3 C.O.E.)  
• • WIDE BODY RANGE • • 2 V-8 ENGINES —  
A FORD UNIT FOR 95% OF ALL AUSTRALIAN  
TRUCK OPERATIONS!**



TRUCK OPERATIONS!

A FORD UNIT FOR 95% OF ALL AUSTRALIAN WIDE BODY RANGE • 2 V-8 ENGINES • MODELS • 8 WHEELBASES (5 REGULAR, 3 C.O.E.) FORD OFFERS FOR 1941



**Ford V-8 Trucks**

YOUR SPECIFIC REQUIREMENTS FOR COMMERCIAL TRANSPORT UNDER WAR CONDITIONS CAN BE SUPPLIED AT LOWER FIRST COST AND LOWER OPERATING COST BY

**WHAT DO YOU WANT?**

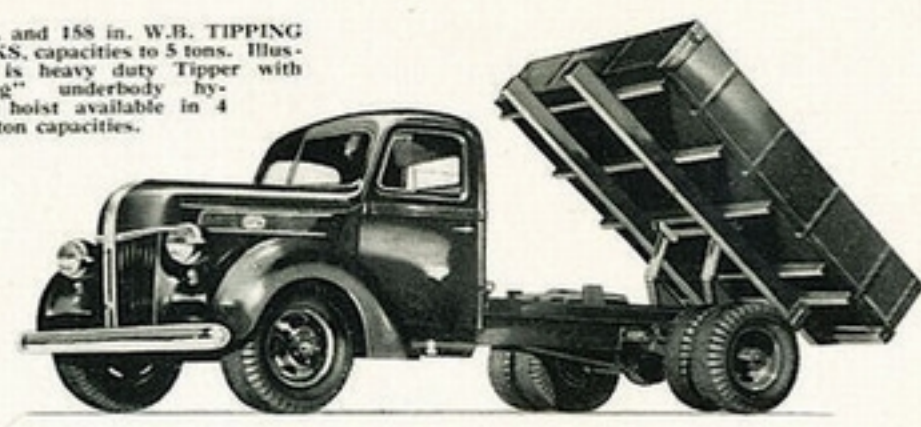
**THE GREAT FORD TRUCK ECONOMY RANGE FOR 1941**

*Here are the Highlights*

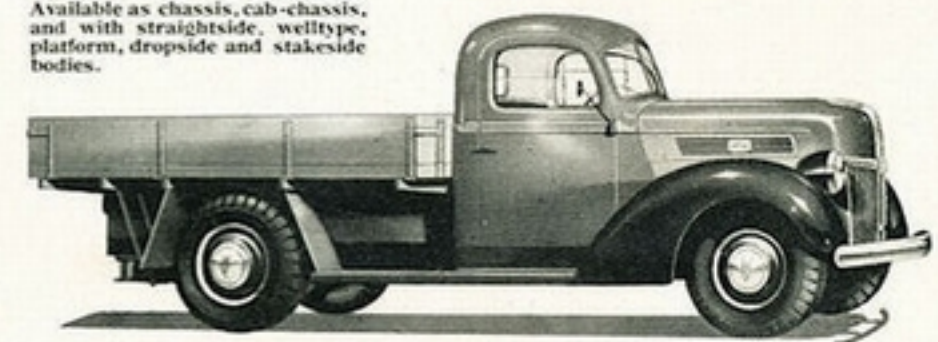
*More points in Ford's favour*

- ★ WHEELBASE: 122 in., 134 in., 158 in., 176 in., 194 in.
- ★ CAB OVER ENGINE: 101 in., 134 in., 158 in. W.B.
- ★ 2 BUS CHASSES: Up to 20 and 27 passenger capacity.
- ★ CAPACITY: 5,500 lbs. to 18,000 lbs. gross vehicle capacity.
- ★ AXLE RATIO: A full range of axle ratios 4.11, 4.86, 5.83, 6.3, 6.66, 8.11, 8.81 to 1. A ratio to suit each individual model.
- ★ TWO V-8 ENGINES: A standard truck engine developing a torque of 170 lbs. ft. at 2,200 R.P.M.  
Heavy Duty truck engine developing a torque of 184 lbs. ft. at 1,850 R.P.M.  
Bore and stroke, 3 1/2 x 3 3/4 in.
- ★ COOLING: Two water pumps located in cylinder block force water through the cylinder block at the rate of 75 gallons a minute at 3,000 R.P.M.
- ★ LUBRICATION: Forced feed lubrication to main connecting rod and camshaft bearings also to camshaft gears. Pump delivers 1.57 gallons of oil a minute at 2,000 R.P.M.
- ★ CRANKSHAFT: Cast alloy steel standard crankshaft weight 66 lbs. or 2.5 lbs. per linear inch. Heavy duty crankshaft weighs 69 lbs. or 2.65 lbs. per linear inch.
- ★ FRAMES: Single and dual type frames ranging from 6 in. deep to 9 in. deep, from 3/8 in. to half an inch thick.
- ★ AXLES: Axle shafts up to an ultimate strength of 75 tons per square inch.

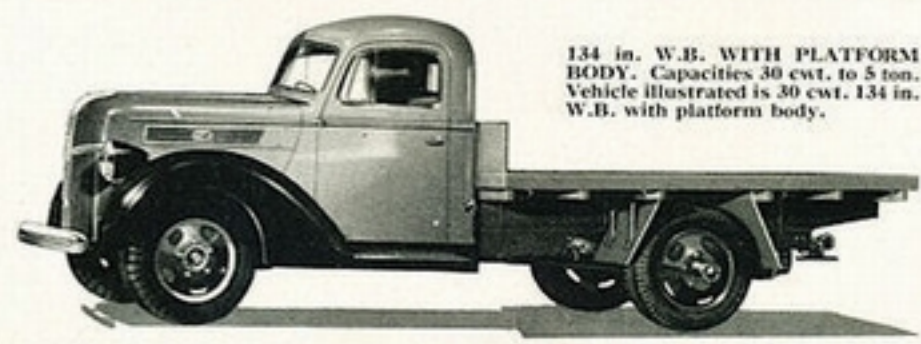
134 in. and 158 in. W.B. TIPPING TRUCKS, capacities to 5 tons. Illustrated is heavy duty Tipper with "G-long" underbody hydraulic hoist available in 4 and 6-ton capacities.



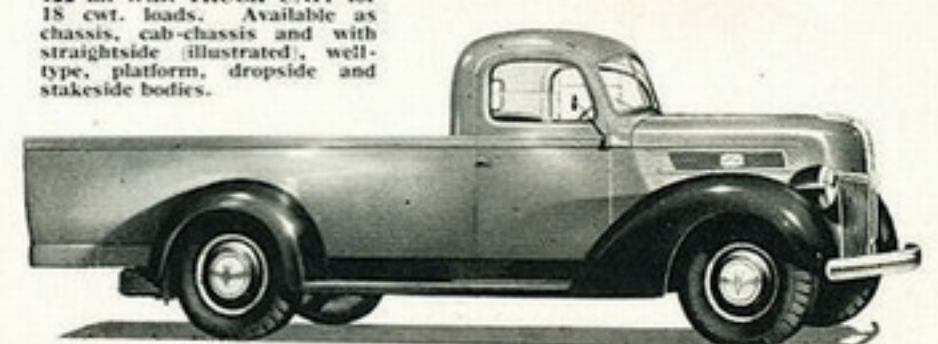
122 in. W.B. TRUCK, capacity 18 cwt., 1 ton and 25-30 cwt. Available as chassis, cab-chassis, and with straightside, welltype, platform, dropside and stakeside bodies.



134 in. W.B. WITH PLATFORM BODY. Capacities 30 cwt. to 5 ton. Vehicle illustrated is 30 cwt. 134 in. W.B. with platform body.



122 in. W.B. TRUCK UNIT for 18 cwt. loads. Available as chassis, cab-chassis and with straightside (illustrated), well-type, platform, dropside and stakeside bodies.



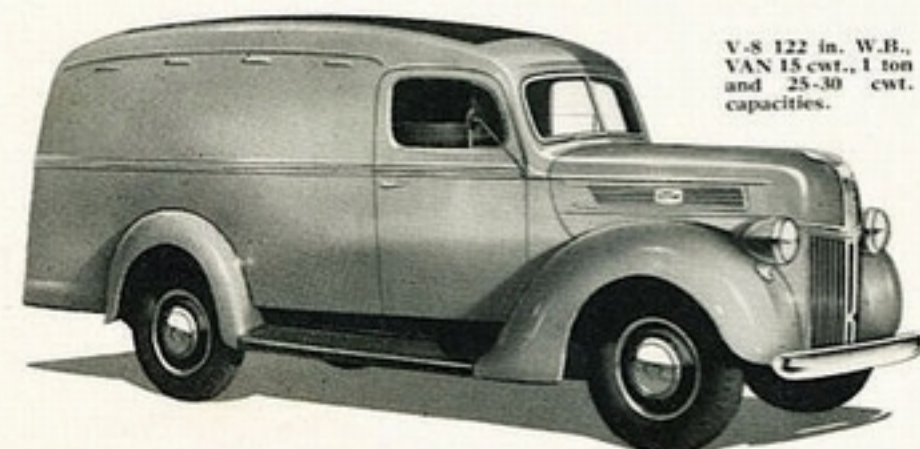
**FORD V-8 WITH M.-H. ALL-WHEEL DRIVE**  
Both 4 and 6 wheel all-wheel drive, available in 134 in. and 158 in. W.B. 2,200 lbs. allowable vehicle weight to 22,000 lbs. (9 tons, 16 cwt., 1 qr., 20 lbs.). For log-haulage and all work over roadless country. These Ford V-8 units offer high engine torque for power and driving ratios from 99.99 to 1 to 1 to 1.



**SPECIAL BUS CHASSIS**  
176 in. and 194 in. W.B. available as chassis only with open type driveway ready for fitment of body for 20-27 passengers. Ford Branches can supply quotations from local body builders for bodies up to 40 passenger capacity on extended chassis.



V-8 122 in. W.B. VAN 15 cwt., 1 ton and 25-30 cwt. capacities.



CAB-OVER-ENGINE TRUCKS now available in 101 in., 134 in., and 158 in. W.B. Illustrated is 101 in. W.B. with 32 ft. semi-trailer.



- ★ 2 SPEED AXLES: Two available with ratios of 5.83-8.11 to 1 and 6.3-8.81 to 1.
- ★ BODY SIZES: 8 ft. x 6 ft. 6 in. and 9 ft. 6 in., 12 ft. 6 in., 14 ft., 6 in., 17 ft. x 7 ft. Semi-trailers, 18 ft. to 32 ft.
- ★ EQUIPMENT: A wide range of all types of labour- and money-saving equipment. Hydraulic tipping hoists, mechanical power hoists, winches, capstans, bag loaders, cranes, pole erecting equipment, all wheel drive.
- ★ ENGINE EXCHANGE SERVICE: Unique to Ford vehicles. Saves overhaul costs, saves time, saves money, new engine warranty.
- ★ GAS PRODUCER: Powell Gas Producer approved and fitted to Ford trucks. New engine warranty given with Powell Plants fitted to new Ford trucks.
- ★ CLUTCH: Two semi-centrifugal clutches, one for standard engines and a special heavy duty for heavy duty engine.
- ★ VALVE INSERTS: Both inlet and exhaust valves have valve seat inserts.
- ★ CYLINDER BLOCK: Semi-steel with mirror finished cylinder walls.
- ★ PISTON RINGS: New oil saving piston rings enhancing the already low oil consumption of the Ford V-8.

**REMEMBER... FORD TRUCKS WERE SALES LEADERS FOR 1940**

Ford Motor Company of Australia Pty. Ltd., whose policy is one of continuous improvement, reserves the right to change specifications and prices at any time without notice or incurring liability to purchasers.

ABSORBERS—standard all models except 15-18 cwt. Utility, which has two front shock absorbers only. SAFETY CLASS ALL ROVND—standard in all models except rear door windows of panel vans.

FRONT BUMPER BAR—standard all models. OIL BATH AIR CLEANER—standard all models. FOUR HYDRAULIC SHOCK

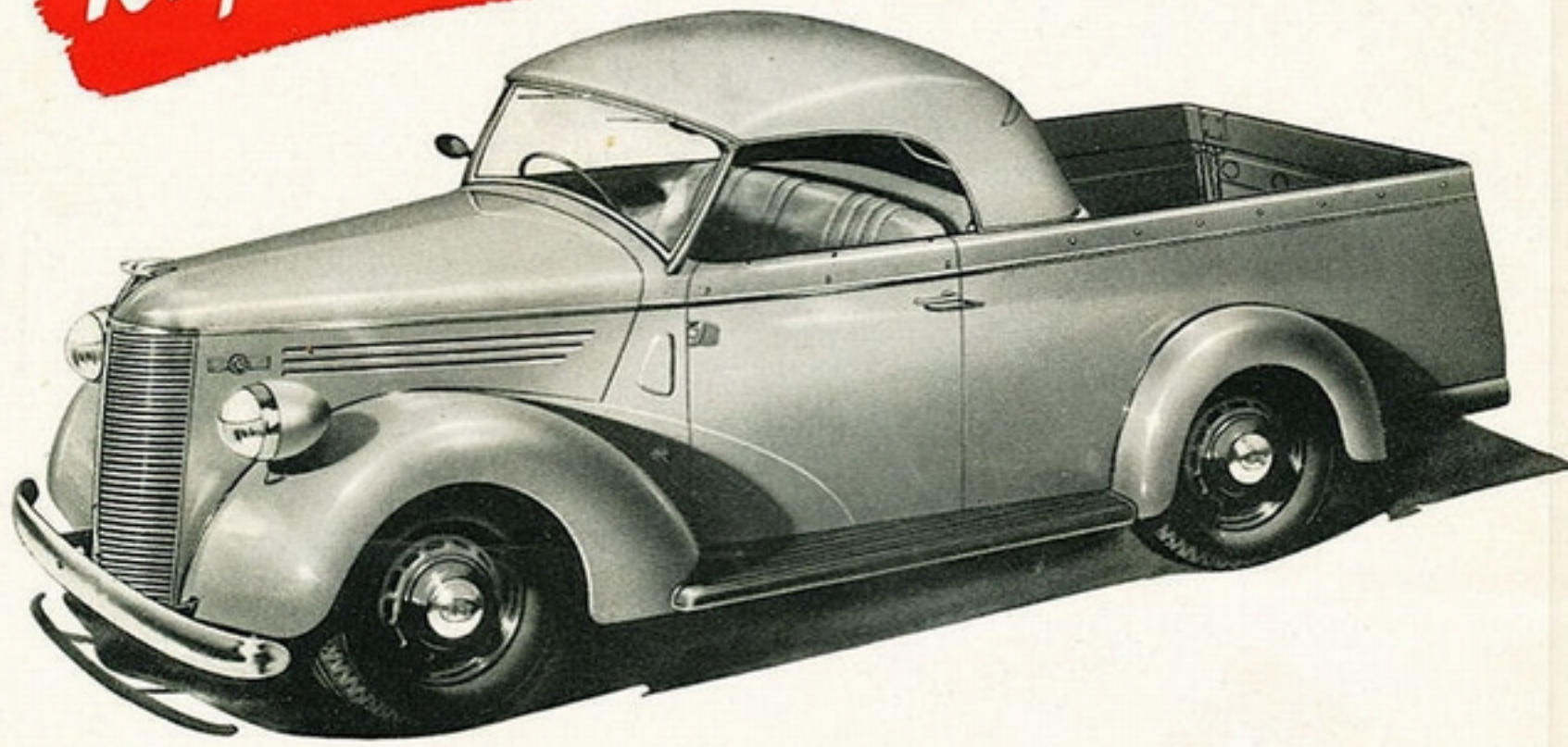
Utilities	Motor	Axle Ratio	Tires	Trim	Wheel Colour	Seat
Standard Coupe 117" W.B.	V8 30 h.p.	4.11 to 1	5-6.00 x 16 1-ply	Split hide	Black	
De Luxe Van 117" W.B.	V8 30 h.p.	4.11 to 1	5-6.00 x 16 1-ply	Chrome leather	Body colour	
Standard Van 117" W.B.	30 h.p.	4.11 to 1	5-16 x 6.00 6-ply	Pointne	Black	
Standard Van 127" W.B.	30 h.p.	4.11 to 1	4-16 x 6.50 6-ply	Pointne	Black	Full width
De Luxe Van 90" W.B.	10 h.p.	5.55 to 1	5-16 x 5.00 4-ply	Pointne	Black	Bucket
Ten-Ten Van 90" W.B.	10 h.p.	6.83 to 1	5-18 x 5.00 4-ply	Pointne	Black	Half seat

Trucks	Torque (lb. ft.)	Engine R.H.P.	Gearbox	Rear Axle	Types F.	Types R.	Gross Weight
127" W.B. 18 cwt.	170	95	3-speed	4.11	6.50 Truck Type	17 x 7.00 8-ply	5500
127" W.B. 1-ton	170	95	3-speed	4.86	17 x 7.00 8-ply	17 x 7.00 8-ply	6500
134" W.B. 25-30 cwt.	170	95	4-speed	5.83	2-32 x 6 8-ply	4-30 x 5 8-ply	7350
134" W.B. 30-cwt.	170	95	4-speed	5.83	2-32 x 6 8-ply	4-30 x 5 8-ply	9000
134" W.B. 3-ton	170	95	4-speed	6.66	2-32 x 6 10-ply	4-34 x 7 10-ply	11800
134" W.B. 4-ton	170	95	4-speed	6.66	2-32 x 6 10-ply	4-34 x 7 10-ply	16000
134" W.B. 5-ton	181	100	HD2-speed	6.66	2-34 x 7 10-ply	4-34 x 7 10-ply	18000
134" W.B. 3-ton	170	95	4-speed	6.66	2-32 x 6 10-ply	4-34 x 7 10-ply	14500
134" W.B. 4-ton	170	95	4-speed	6.66	2-32 x 6 10-ply	4-34 x 7 10-ply	16000
134" W.B. 5-ton	181	100	HD2-speed	6.66	2-34 x 7 10-ply	4-34 x 7 10-ply	18000
134" W.B. COE 3-ton	170	95	4-speed	6.66	2-32 x 6 10-ply	4-34 x 7 10-ply	14500
134" W.B. COE 4-ton	170	95	4-speed	6.66	2-32 x 6 10-ply	4-34 x 7 10-ply	16000
134" W.B. COE 5-ton	181	100	HD2-speed	6.66	2-34 x 7 10-ply	4-34 x 7 10-ply	18000
134" W.B. COE 3-ton	170	95	4-speed	6.66	2-32 x 6 10-ply	4-34 x 7 10-ply	14500
134" W.B. COE 4-ton	170	95	4-speed	6.66	2-32 x 6 10-ply	4-34 x 7 10-ply	16000
134" W.B. COE 5-ton	181	100	HD2-speed	6.66	2-34 x 7 10-ply	4-34 x 7 10-ply	18000
134" W.B. COE 3-ton	170	95	4-speed	6.66	2-32 x 6 10-ply	4-34 x 7 10-ply	14500
134" W.B. COE 4-ton	170	95	4-speed	6.66	2-32 x 6 10-ply	4-34 x 7 10-ply	16000
134" W.B. COE 5-ton	181	100	HD2-speed	6.66	2-34 x 7 10-ply	4-34 x 7 10-ply	18000
134" W.B. COE 3-ton	170	95	4-speed	6.66	2-32 x 6 10-ply	4-34 x 7 10-ply	14500
134" W.B. COE 4-ton	170	95	4-speed	6.66	2-32 x 6 10-ply	4-34 x 7 10-ply	16000
134" W.B. COE 5-ton	181	100	HD2-speed	6.66	2-34 x 7 10-ply	4-34 x 7 10-ply	18000
134" W.B. COE 3-ton	170	95	4-speed	6.66	2-32 x 6 10-ply	4-34 x 7 10-ply	14500
134" W.B. COE 4-ton	170	95	4-speed	6.66	2-32 x 6 10-ply	4-34 x 7 10-ply	16000
134" W.B. COE 5-ton	181	100	HD2-speed	6.66	2-34 x 7 10-ply	4-34 x 7 10-ply	18000
134" W.B. COE 3-ton	170	95	4-speed	6.66	2-32 x 6 10-ply	4-34 x 7 10-ply	14500
134" W.B. COE 4-ton	170	95	4-speed	6.66	2-32 x 6 10-ply	4-34 x 7 10-ply	16000
134" W.B. COE 5-ton	181	100	HD2-speed	6.66	2-34 x 7 10-ply	4-34 x 7 10-ply	18000
134" W.B. COE 3-ton	170	95	4-speed	6.66	2-32 x 6 10-ply	4-34 x 7 10-ply	14500
134" W.B. COE 4-ton	170	95	4-speed	6.66	2-32 x 6 10-ply	4-34 x 7 10-ply	16000
134" W.B. COE 5-ton	181	100	HD2-speed	6.66	2-34 x 7 10-ply	4-34 x 7 10-ply	18000
134" W.B. COE 3-ton	170	95	4-speed	6.66	2-32 x 6 10-ply	4-34 x 7 10-ply	14500
134" W.B. COE 4-ton	170	95	4-speed	6.66	2-32 x 6 10-ply	4-34 x 7 10-ply	16000
134" W.B. COE 5-ton	181	100	HD2-speed	6.66	2-34 x 7 10-ply	4-34 x 7 10-ply	18000
134" W.B. COE 3-ton	170	95	4-speed	6.66	2-32 x 6 10-ply	4-34 x 7 10-ply	14500
134" W.B. COE 4-ton	170	95	4-speed	6.66	2-32 x 6 10-ply	4-34 x 7 10-ply	16000
134" W.B. COE 5-ton	181	100	HD2-speed	6.66	2-34 x 7 10-ply	4-34 x 7 10-ply	18000
134" W.B. COE 3-ton	170	95	4-speed	6.66	2-32 x 6 10-ply	4-34 x 7 10-ply	14500
134" W.B. COE 4-ton	170	95	4-speed	6.66	2-32 x 6 10-ply	4-34 x 7 10-ply	16000
134" W.B. COE 5-ton	181	100	HD2-speed	6.66	2-34 x 7 10-ply	4-34 x 7 10-ply	18000
134" W.B. COE 3-ton	170	95	4-speed	6.66	2-32 x 6 10-ply	4-34 x 7 10-ply	14500
134" W.B. COE 4-ton	170	95	4-speed	6.66	2-32 x 6 10-ply	4-34 x 7 10-ply	16000
134" W.B. COE 5-ton	181	100	HD2-speed	6.66	2-34 x 7 10-ply	4-34 x 7 10-ply	18000
134" W.B. COE 3-ton	170	95	4-speed	6.66	2-32 x 6 10-ply	4-34 x 7 10-ply	14500
134" W.B. COE 4-ton	170	95	4-speed	6.66	2-32 x 6 10-ply	4-34 x 7 10-ply	16000
134" W.B. COE 5-ton	181	100	HD2-speed	6.66	2-34 x 7 10-ply	4-34 x 7 10-ply	18000
134" W.B. COE 3-ton	170	95	4-speed	6.66	2-32 x 6 10-ply	4-34 x 7 10-ply	14500
134" W.B. COE 4-ton	170	95	4-speed	6.66	2-32 x 6 10-ply	4-34 x 7 10-ply	16000
134" W.B. COE 5-ton	181	100	HD2-speed	6.66	2-34 x 7 10-ply	4-34 x 7 10-ply	18000
134" W.B. COE 3-ton	170	95	4-speed	6.66	2-32 x 6 10-ply	4-34 x 7 10-ply	14500
134" W.B. COE 4-ton	170	95	4-speed	6.66	2-32 x 6 10-ply	4-34 x 7 10-ply	16000
134" W.B. COE 5-ton	181	100	HD2-speed	6.66	2-34 x 7 10-ply	4-34 x 7 10-ply	18000
134" W.B. COE 3-ton	170	95	4-speed	6.66	2-32 x 6 10-ply	4-34 x 7 10-ply	14500
134" W.B. COE 4-ton	170	95	4-speed	6.66	2-32 x 6 10-ply	4-34 x 7 10-ply	16000
134" W.B. COE 5-ton	181	100	HD2-speed	6.66	2-34 x 7 10-ply	4-34 x 7 10-ply	18000
134" W.B. COE 3-ton	170	95	4-speed	6.66	2-32 x 6 10-ply	4-34 x 7 10-ply	14500
134" W.B. COE 4-ton	170	95	4-speed	6.66	2-32 x 6 10-ply	4-34 x 7 10-ply	16000
134" W.B. COE 5-ton	181	100	HD2-speed	6.66	2-34 x 7 10-ply	4-34 x 7 10-ply	18000
134" W.B. COE 3-ton	170	95	4-speed	6.66	2-32 x 6 10-ply	4-34 x 7 10-ply	14500
134" W.B. COE 4-ton	170	95	4-speed	6.66	2-32 x 6 10-ply	4-34 x 7 10-ply	16000
134" W.B. COE 5-ton	181	100	HD2-speed	6.66	2-34 x 7 10-ply	4-34 x 7 10-ply	18000
134" W.B. COE 3-ton	170	95	4-speed	6.66	2-32 x 6 10-ply	4-34 x 7 10-ply	14500
134" W.B. COE 4-ton	170	95	4-speed	6.66	2-32 x 6 10-ply	4-34 x 7 10-ply	16000
134" W.B. COE 5-ton	181	100	HD2-speed	6.66	2-34 x 7 10-ply	4-34 x 7 10-ply	18000
134" W.B. COE 3-ton	170	95	4-speed	6.66	2-32 x 6 10-ply	4-34 x 7 10-ply	14500
134" W.B. COE 4-ton	170	95	4-speed	6.66	2-32 x 6 10-ply	4-34 x 7 10-ply	16000
134" W.B. COE 5-ton	181	100	HD2-speed	6.66	2-34 x 7 10-ply	4-34 x 7 10-ply	18000
134" W.B. COE 3-ton	170	95	4-speed	6.66	2-32 x 6 10-ply	4-34 x 7 10-ply	14500
134" W.B. COE 4-ton	170	95	4-speed	6.66	2-32 x 6 10-ply	4-34 x 7 10-ply	16000
134" W.B. COE 5-ton	181	100	HD2-speed	6.66	2-34 x 7 10-ply	4-34 x 7 10-ply	18000
134" W.B. COE 3-ton	170	95	4-speed	6.66	2-32 x 6 10-ply	4-34 x 7 10-ply	14500
134" W.B. COE 4-ton	170	95	4-speed	6.66	2-32 x 6 10-ply	4-34 x 7 10-ply	16000
134" W.B. COE 5-ton	181	100	HD2-speed	6.66	2-34 x 7 10-ply	4-34 x 7 10-ply	18000
134" W.B. COE 3-ton	170	95	4-speed	6.66	2-32 x 6 10-ply	4-34 x 7 10-ply	14500
134" W.B. COE 4-ton	170	95	4-speed	6.66	2-32 x 6 10-ply	4-34 x 7 10-ply	16000
134" W.B. COE 5-ton	181	100	HD2-speed	6.66	2-34 x 7 10-ply	4-34 x 7 10-ply	18000
134" W.B. COE 3-ton	170	95	4-speed	6.66	2-32 x 6 10-ply	4-34 x 7 10-ply	14500
134" W.B. COE 4-ton	170	95	4-speed	6.66	2-32 x 6 10-ply	4-34 x 7 10-ply	16000
134" W.B. COE 5-ton	181	100	HD2-speed	6.66	2-34 x 7 10-ply	4-34 x 7 10-ply	18000
134" W.B. COE 3-ton	170	95	4-speed	6.66	2-32 x 6 10-ply	4-34 x 7 10-ply	14500
134" W.B. COE 4-ton	170	95	4-speed	6.66	2-32 x 6 10-ply	4-34 x 7 10-ply	16000
134" W.B. COE 5-ton	181	100	HD2-speed	6.66	2-34 x 7 10-ply	4-34 x 7 10-ply	18000
134" W.B. COE 3-ton	170	95	4-speed	6.66			

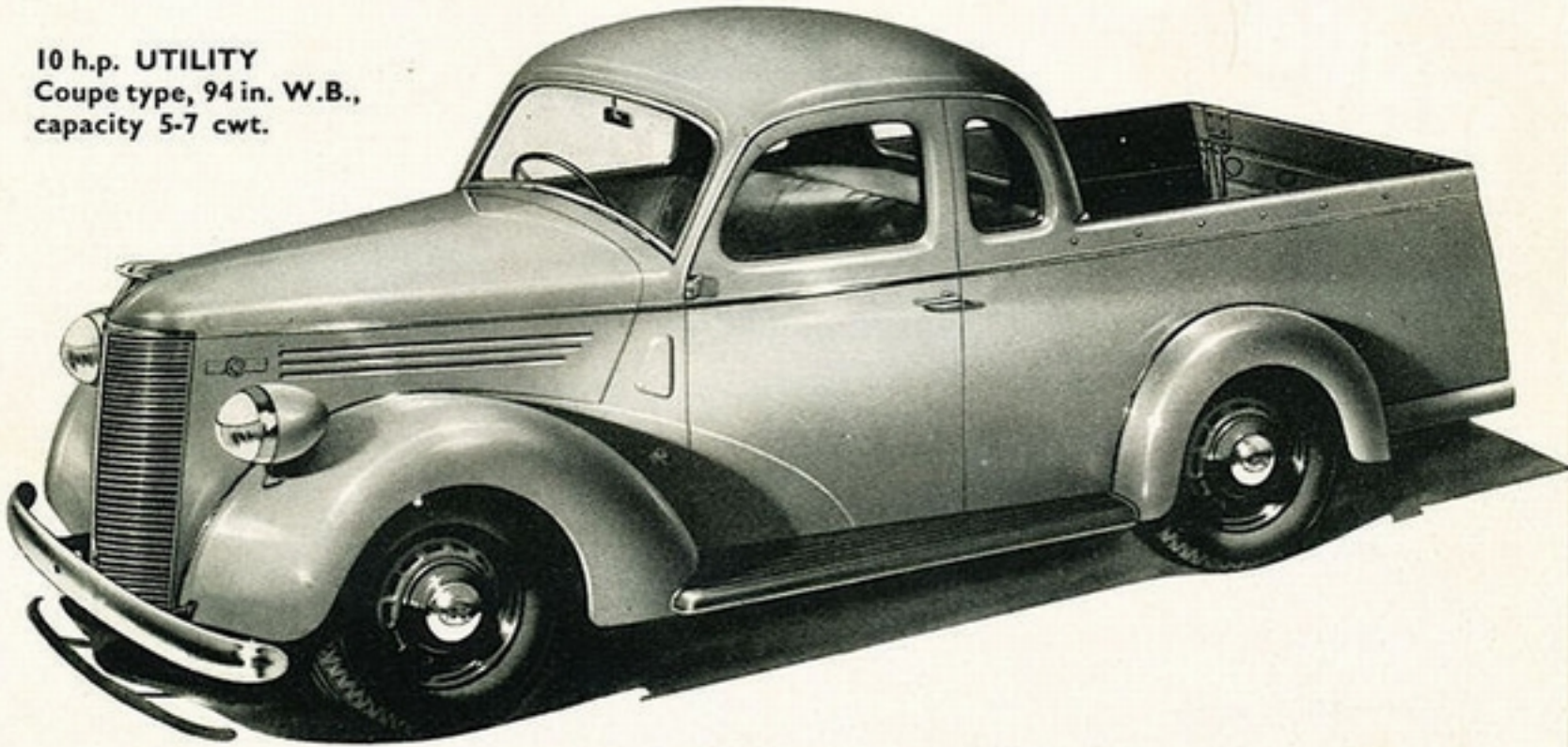


## 10 h.p. UTILITIES

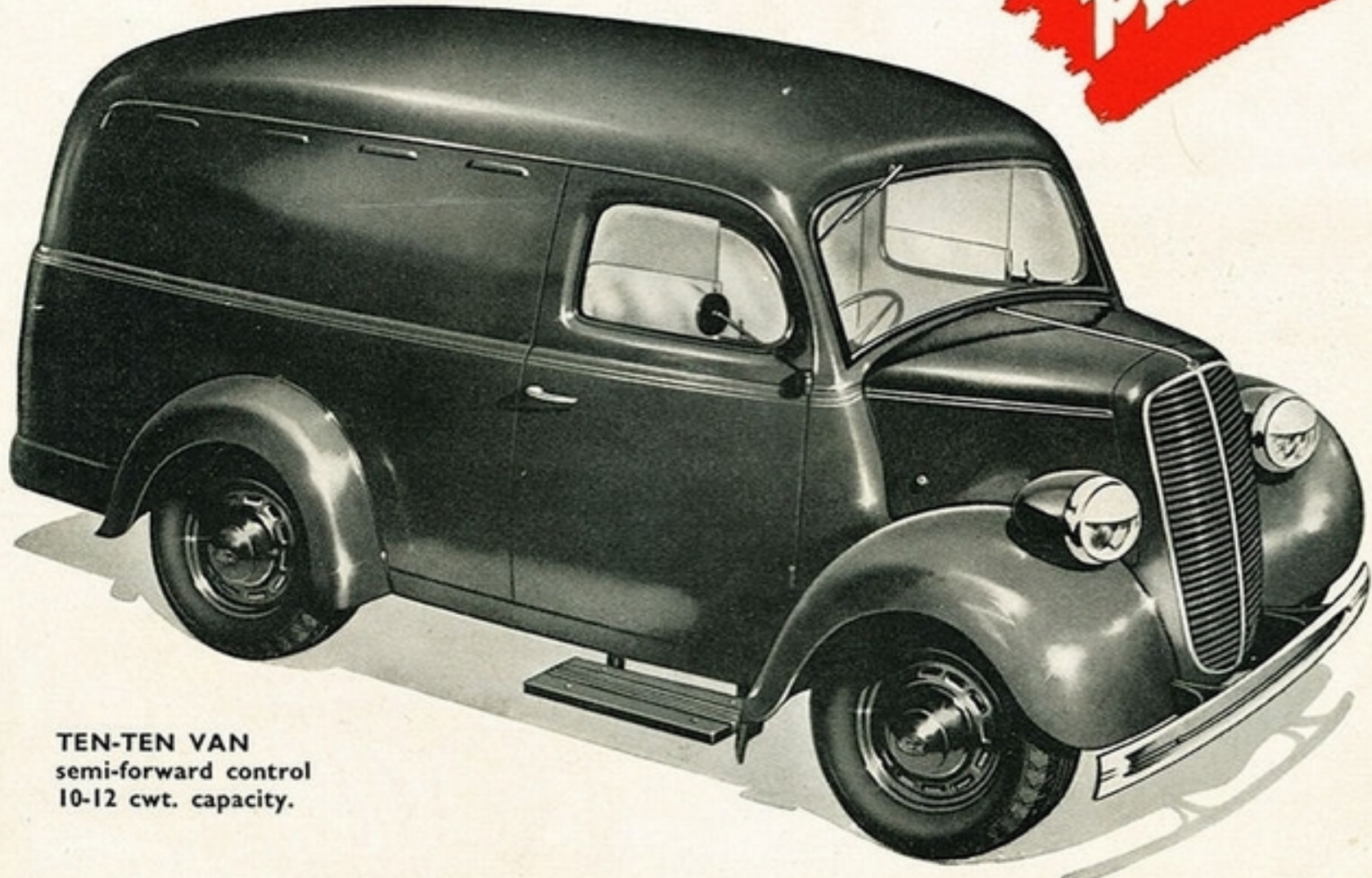
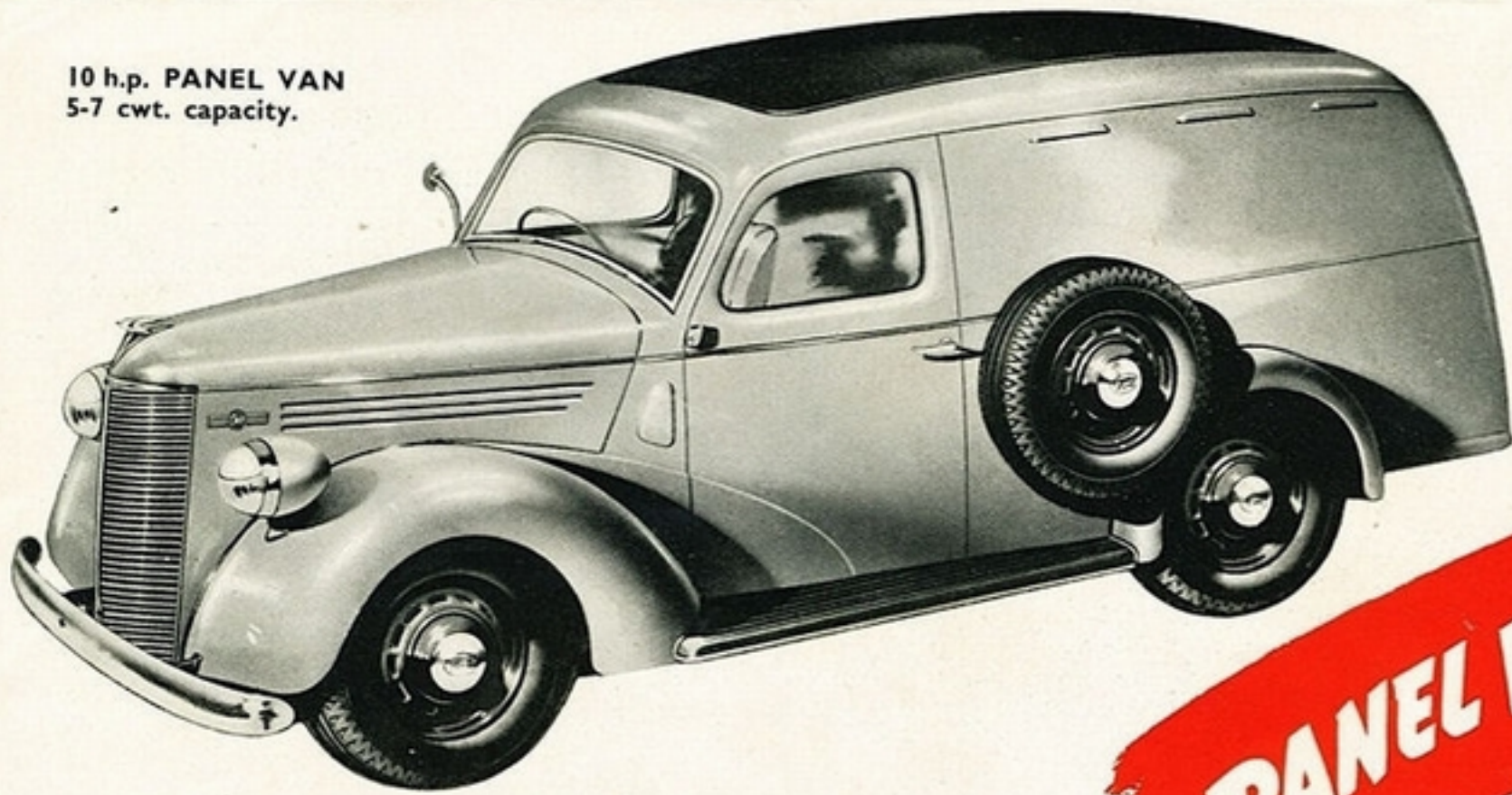
10 h.p. UTILITY  
Roadster type, 94 in. W.B.,  
capacity 5-7 cwt.



10 h.p. UTILITY  
Coupe type, 94 in. W.B.,  
capacity 5-7 cwt.



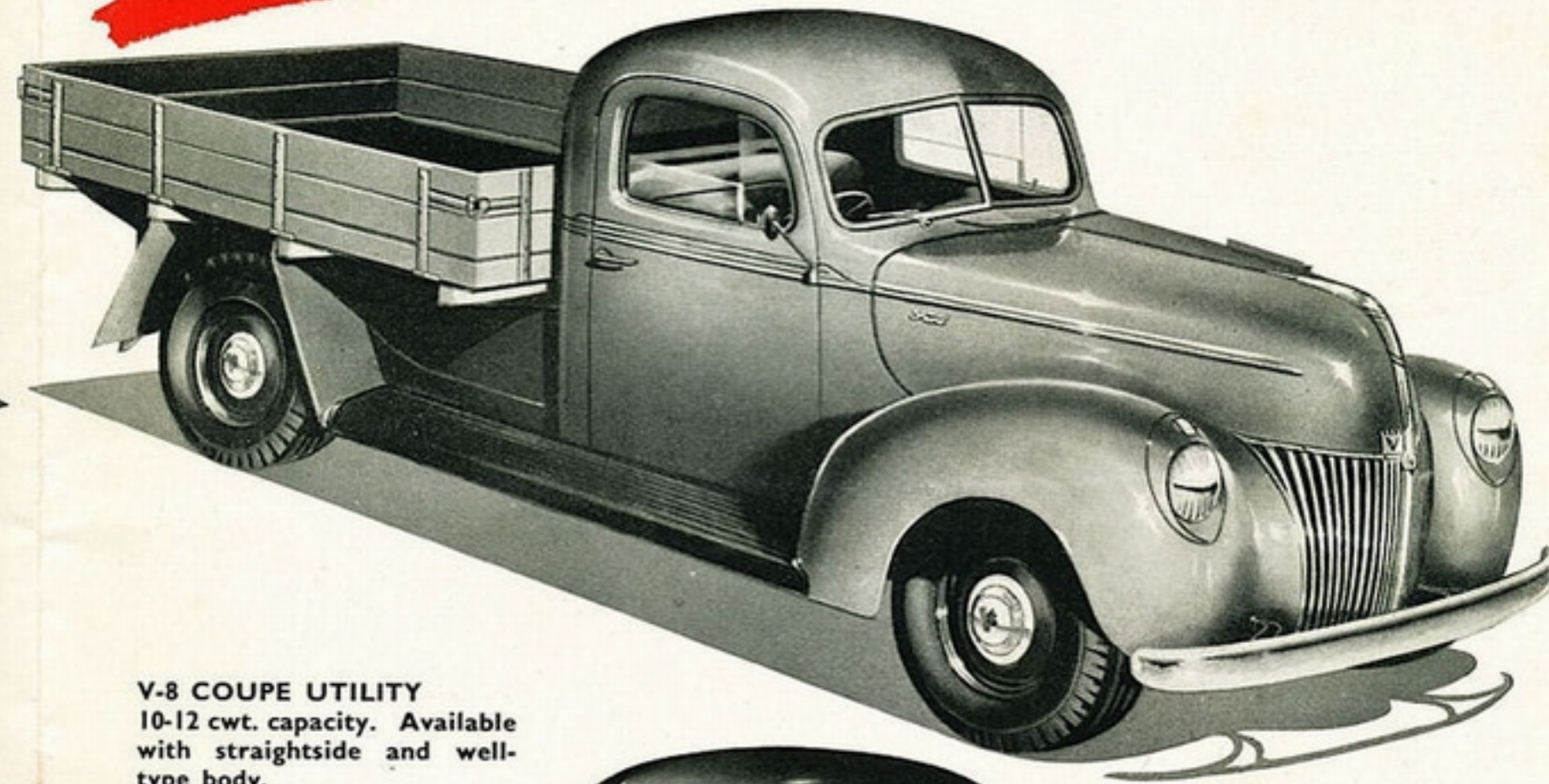
10 h.p. PANEL VAN  
5-7 cwt. capacity.



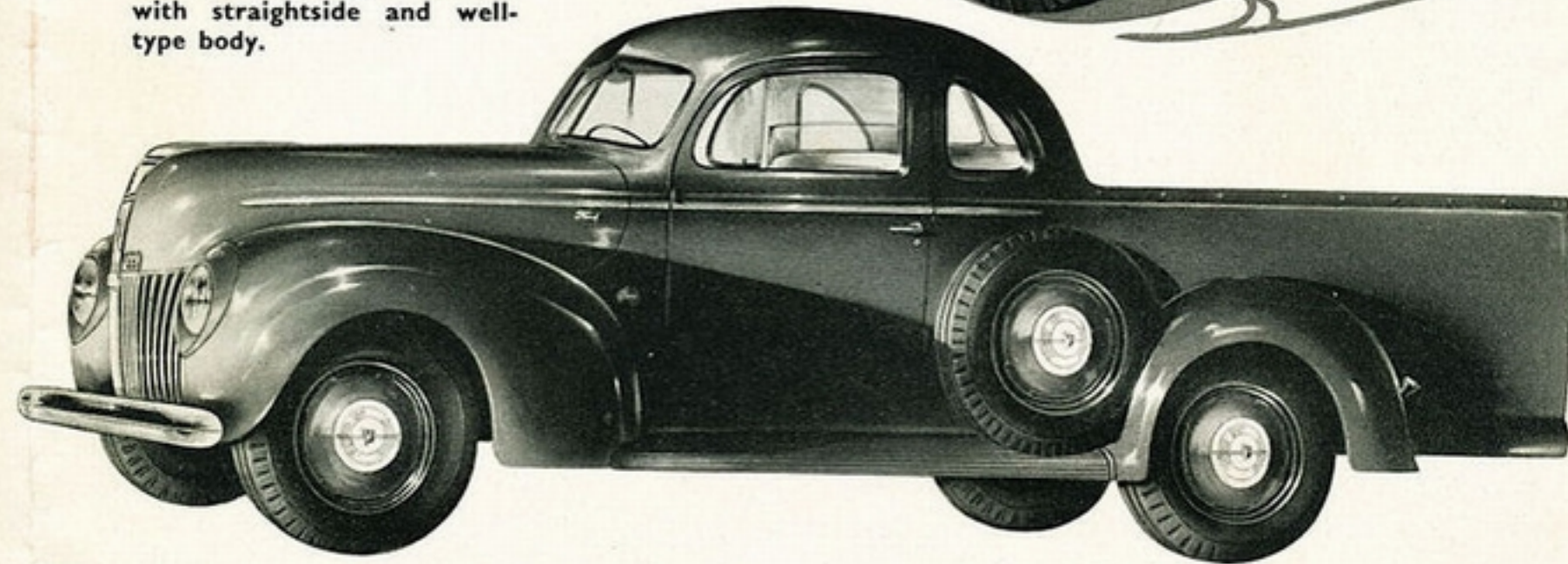
TEN-TEN VAN  
semi-forward control  
10-12 cwt. capacity.

## V-8 UTILITIES

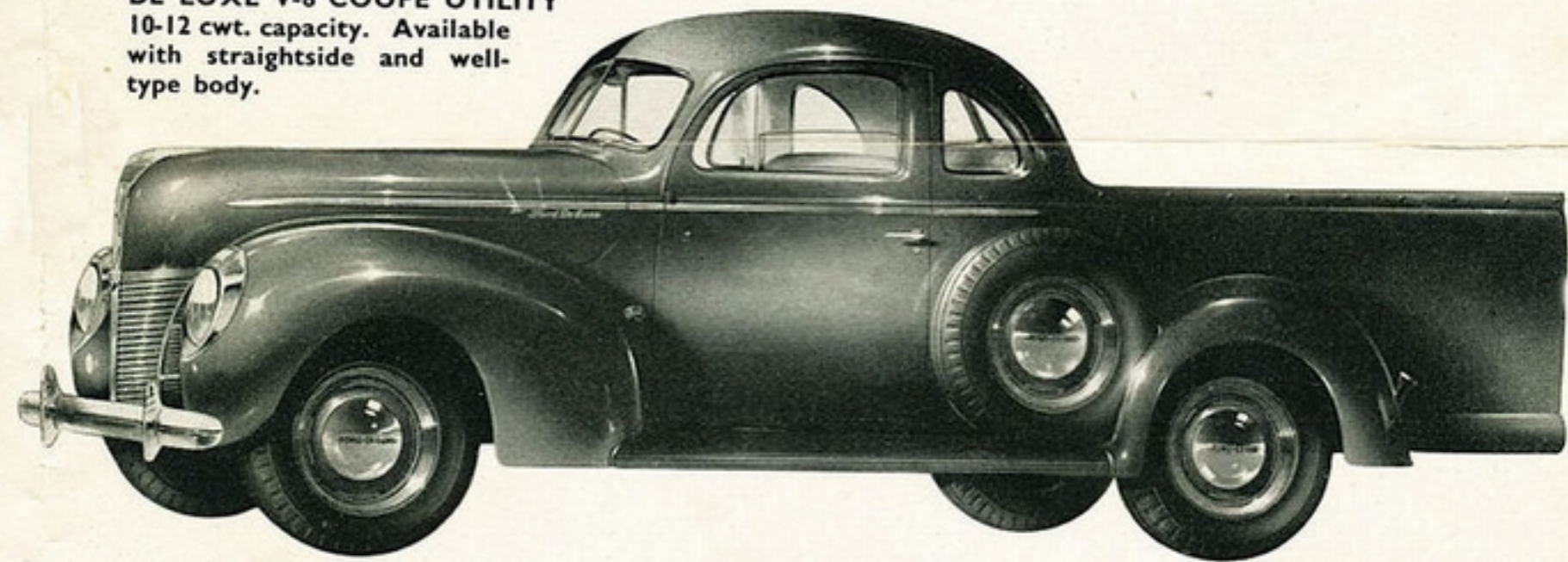
V-8 GENERAL UTILITIES  
12 and 15 cwt. capacities.  
Available as chassis, cab-  
chassis and with straight-  
side, welltype, platform, drop-  
side and stakeside bodies.



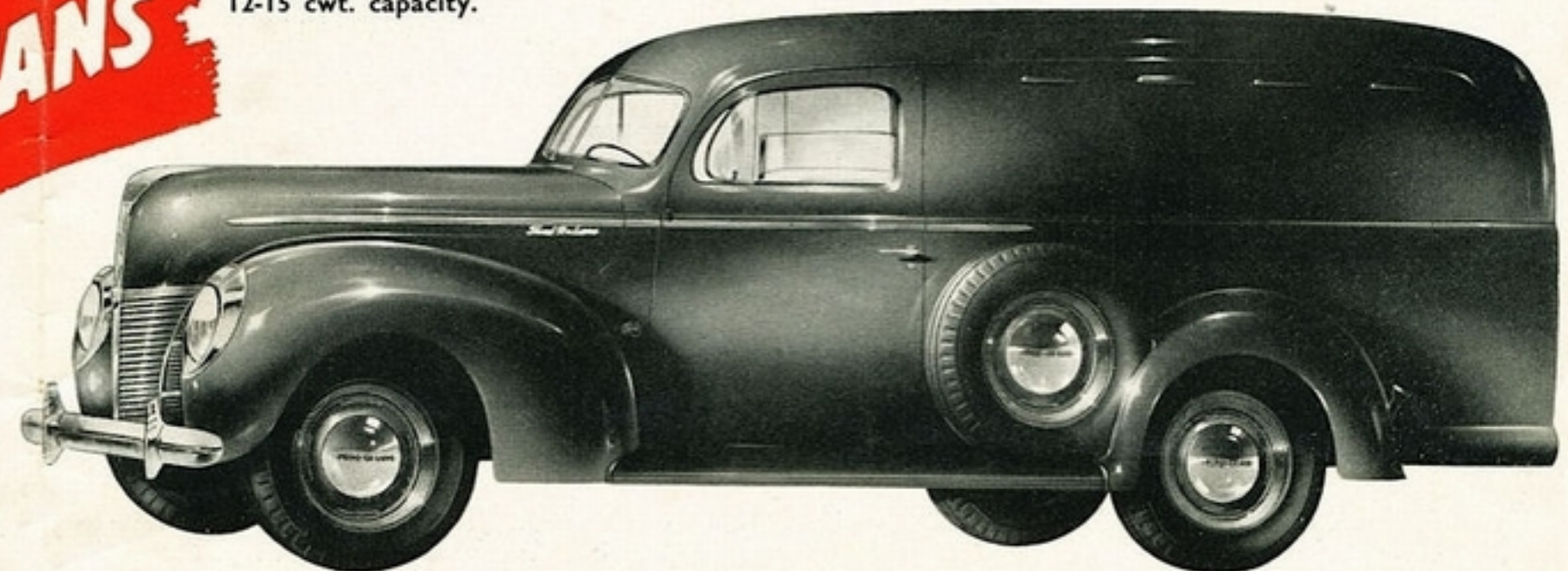
V-8 COUPE UTILITY  
10-12 cwt. capacity. Available  
with straightside and well-  
type body.



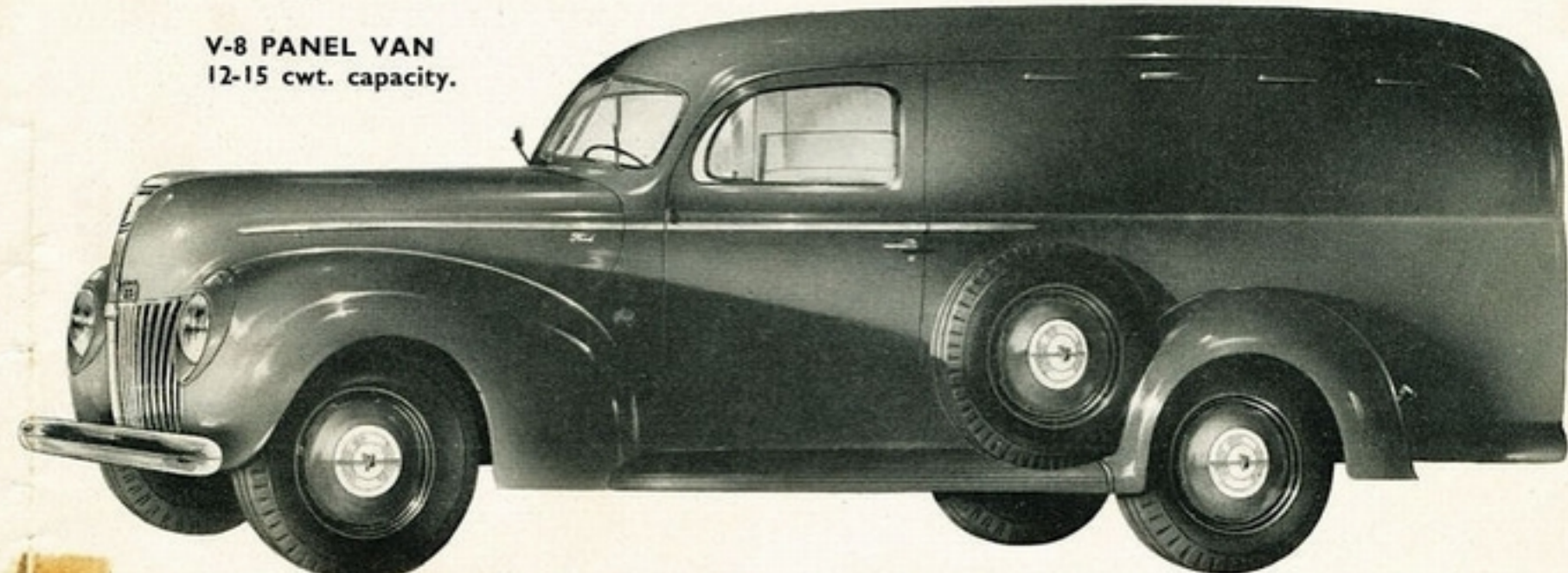
DE LUXE V-8 COUPE UTILITY  
10-12 cwt. capacity. Available  
with straightside and well-  
type body.



DE LUXE V-8 PANEL VAN  
12-15 cwt. capacity.



V-8 PANEL VAN  
12-15 cwt. capacity.



## PANEL VANS

AND LOOK AT THE GREAT FORD LIGHT COMMERCIAL RANGE



# THERE'S A FORD SPECIALISED UNIT FOR EVERY TRANSPORT NEED

Trucks	Torque (lbs. ft.)	Engine B.H.P.	Gearbox	Rear Axle	Tyres F.	Tyres R.	Gross Weight	Frame
122" W.B. 18 cwt.	170	95	3-speed	4.11	6.50 Truck Type	6.50 Truck Type	5500	Standard
122" W.B. 1-ton	170	95	3-speed	4.86	17 x 7.00 6-ply	17 x 7.00 8-ply	6500	Standard
122" W.B. 25-30 cwt.	170	95	4-speed	4.86	17 x 7.00 8-ply	17 x 7.50 8-ply	7350	Standard
134" W.B. 30-cwt.	170	95	4-speed	5.83	2-30 x 5 8-ply	2-32 x 6 8-ply	9000	Standard
134" W.B. 2-ton	170	95	4-speed	6.66	2-30 x 5 8-ply	4-30 x 5 8-ply	11800	Standard
134" W.B. 3-ton	170	95	4-speed	6.66	2-32 x 6 10-ply	4-32 x 6 10-ply	14500	Standard
134" W.B. 4-ton	170	95	4-speed	6.66	2-7.00 x 20	4-34 x 7 10-ply	16000	Dual
134" W.B. 5-ton	184	100	4-speed	HD2-speed	2-34 x 7 10-ply	4-34 x 7 10-ply	18000	Dual
158" W.B. 30-40 cwt.	170	95	4-speed	6.66	2-32 x 6 8-ply	2-32 x 6 10-ply	9500	Standard
158" W.B. 2-ton	170	95	4-speed	6.66	2-30 x 5 8-ply	4-30 x 5 8-ply	11800	Standard
158" W.B. 3-ton	170	95	4-speed	6.66	2-32 x 6 10-ply	4-32 x 6 10-ply	14500	Standard
158" W.B. 4-ton	170	95	4-speed	6.66	2-7.00 x 20	34 x 7 10-ply	16000	Dual
158" W.B. 5-ton	184	100	4-speed	HD2-speed	2-34 x 7 10-ply	4-34 x 7 10-ply	18000	Dual
176" W.B. Bus	170	95	4-speed	6.66	2-7.50 x 18	4-7.50 x 18	14500	Dual
176" W.B. 3-ton	170	95	4-speed	6.66	2-32 x 6 10-ply	4-32 x 6 10-ply	14500	Dual
176" W.B. 4-ton	170	95	4-speed	6.66	2-7.00 x 20	4-34 x 7 10-ply	16000	Dual
176" W.B. 5-ton	184	100	4-speed	HD2-speed	2-34 x 7	4-34 x 7 10-ply	18000	Dual
194" 5-ton	184	100	4-speed	HD2-speed	2-34 x 7	4-34 x 7 10-ply	18000	9" Special
134" W.B. COE 3-ton	170	95	4-speed	6.66	2-32 x 6 10-ply	4-32 x 6 10-ply	14500	Standard
134" W.B. COE 4-ton	170	95	4-speed	6.66	2-7.00 x 20	4-34 x 7 10-ply	16000	Dual
134" W.B. COE 5-ton	184	100	4-speed	HD2-speed	2-34 x 7	4-34 x 7 10-ply	18000	Dual
158" W.B. COE 3-ton	170	95	4-speed	6.66	2-32 x 6 10-ply	4-32 x 6 10-ply	14500	Standard
158" W.B. COE 4-ton	170	95	4-speed	6.66	2-7.00 x 20	4-34 x 7 10-ply	16000	Dual
158" W.B. COE 5-ton	184	100	4-speed	HD2-speed	2-34 x 7	4-34 x 7 10-ply	18000	Dual
101" 3-ton	170	95	4-speed	6.66	2-32 x 6 10-ply	4-32 x 6 10-ply	14500	Standard
194" W.B. Bus	170	95	4-speed	6.66	2-7.50 x 18	4-7.50 x 18 8-ply	14500	Standard

Utilities	Motor	Axle Ratio	Tyres	Trim	Wheel Colour	Seat
Standard Coupe 112" W.B.	V8 30 h.p.	4.11 to 1	5-6.00 x 16 4-ply	Split hide	Black	
De Luxe Coupe 112" W.B.	V8 30 h.p.	4.11 to 1	5-6.00 x 16 4-ply	Chrome leather	Body colour	
10 h.p. 94" W.B.	10 h.p. 4 cyl.	5.55 to 1	5-16 x 5.00 4-ply	Fabricoid (Roadster)	Black	
E83W 90" W.B.	10 h.p. 4 cyl.	6.83 to 1	5-18 x 5.00 4-ply	Split Hide (Coupe)	Black	
<b>PANEL VANS:</b>						
Standard Van 112" W.B.	30 h.p.	4.11 to 1	5-16 x 6.00 6-ply	Pontine	Black	Full width
De Luxe Van 112" W.B.	30 h.p.	4.11 to 1	5-16 x 6.00 6-ply	Chrome leather	Body colour	Full width
Standard Van 122" W.B.	30 h.p.	4.11 to 1	4-16 x 6.50 6-ply	Pontine	Black	Full width
			Truck type			
10 h.p. Van 94" W.B.	10 h.p.	5.55 to 1	5-16 x 5.00 4-ply	Pontine	Black	Bucket
Ten-Ten Van 90" W.B.	10 h.p.	6.83 to 1	5-18 x 5.00 4-ply	Pontine	Black	Half seat

FRONT BUMPER BAR—standard all models. OIL BATH AIR CLEANER—standard all models. FOUR HYDRAULIC SHOCK ABSORBERS—standard all models except 15-18 cwt. Utility, which

has two front shock absorbers only. SAFETY GLASS ALL ROUND—standard in all models except rear door windows of panel vans.

Ford Motor Company of Australia Pty. Ltd., whose policy is one of continuous improvement, reserves the right to change specifications and prices at any time without notice or incurring liability to purchasers.