

April 1, 1911

Price List of Parts—Ford Model T

The Ford Motor Company

Main Factory and General Offices
DETROIT, U. S. A.

BRANCHES

ATLANTA
311 Peachtree Street

BOSTON
147 Columbus Avenue

BUFFALO
1050 Main Street

CAMBRIDGE
195 Massachusetts Avenue

CHICAGO
1444 Michigan Avenue

CINCINNATI
911 Race Street

CLEVELAND
1914 Euclid Ave.

DALLAS
1915 Commerce Street

DENVER
1552 Broadway

DETROIT
1550 Woodward Avenue

FARGO
17 Broadway

FOREIGN DEPT.
18 Broadway, N. Y.

HOUSTON
800 Walker Avenue

INDIANAPOLIS
526 North Capitol Avenue

KANSAS CITY
1608 Grand Avenue

LONDON
57 Shaftesbury Avenue

NEW YORK
1723 Broadway

OMAHA
1916 Harney Street

PARIS
6 bis, rue Auber

PHILADELPHIA
250 N. Broad Street

PITTSBURG
5925 Baum Street

ST. LOUIS
3667 Olive Street

SEATTLE
532 19th Avenue, North

Canadian Trade Supplied by

The FORD MOTOR CO., of Canada, Limited
WALKERVILLE, ONTARIO

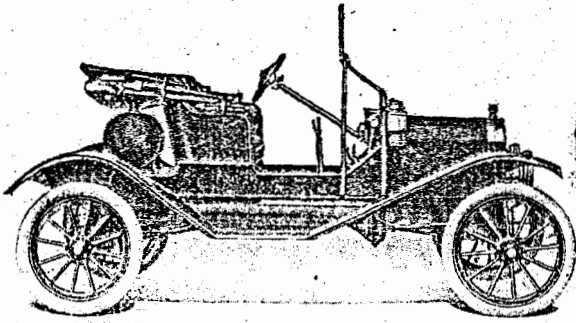
HAMILTON
128 King St. West

MELBOURNE
103 William Street

MTREAL
Union Street

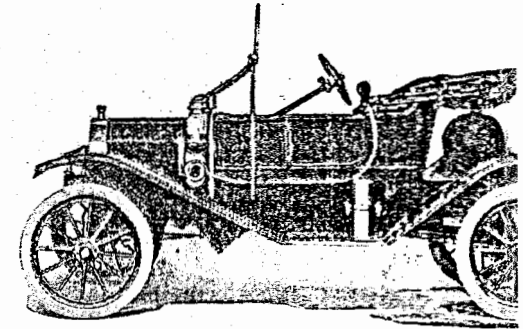
TORONTO
106 Richmond St.

WINNIPEG
309 Cumberland Avenue



2 Passenger Open Runabout

Instructions For Ordering Parts

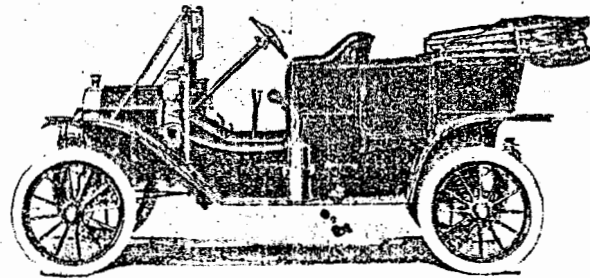


2 Passenger Torpedo Runabout

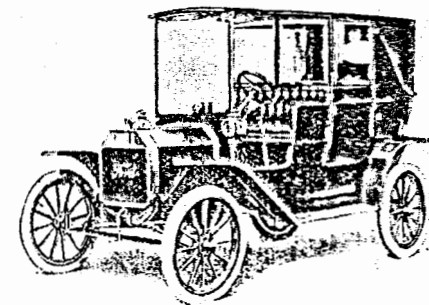
1. Order all parts through the nearest Branch or Dealer representing us in your territory, as parts are generally carried in stock by them.
2. Specify model, and give number and name of each part ordered, as well as the machine number.
3. Cash should accompany all orders. If it is desired to have parts shipped C. O. D., a deposit sufficient to cover transportation charges must be remitted with the order.
4. Mail orders must be accompanied by an amount sufficient to cover postage.
5. All prices are net f. o. b. Detroit.
6. Specify whether shipments are to be forwarded by mail, express or freight.
7. Orders for parts should be written separately from correspondence pertaining to other matters, as this will insure prompt handling by the proper department at the factory.



2 Passenger Coupe



5 Passenger Touring Car



6 Passenger Town Car

Telegraph Code

TO save expense, to expedite ordering and for the convenience of those ordering parts, we have arranged a code word for each part of the Model "T" car. In addition to the parts code we list below a brief general code covering miscellaneous instruction, questions and answers relative to the entering and shipping of parts ordered.

¶ In telegraphing an order for parts start with the code telling us how to ship, then use the word for the next part, stating the number required and then give the number of your car.

¶ The following will illustrate how to send in an express order for 8 push rods No. 3058, 1 fan No. 496, and 3 transmission band springs No. 3425:

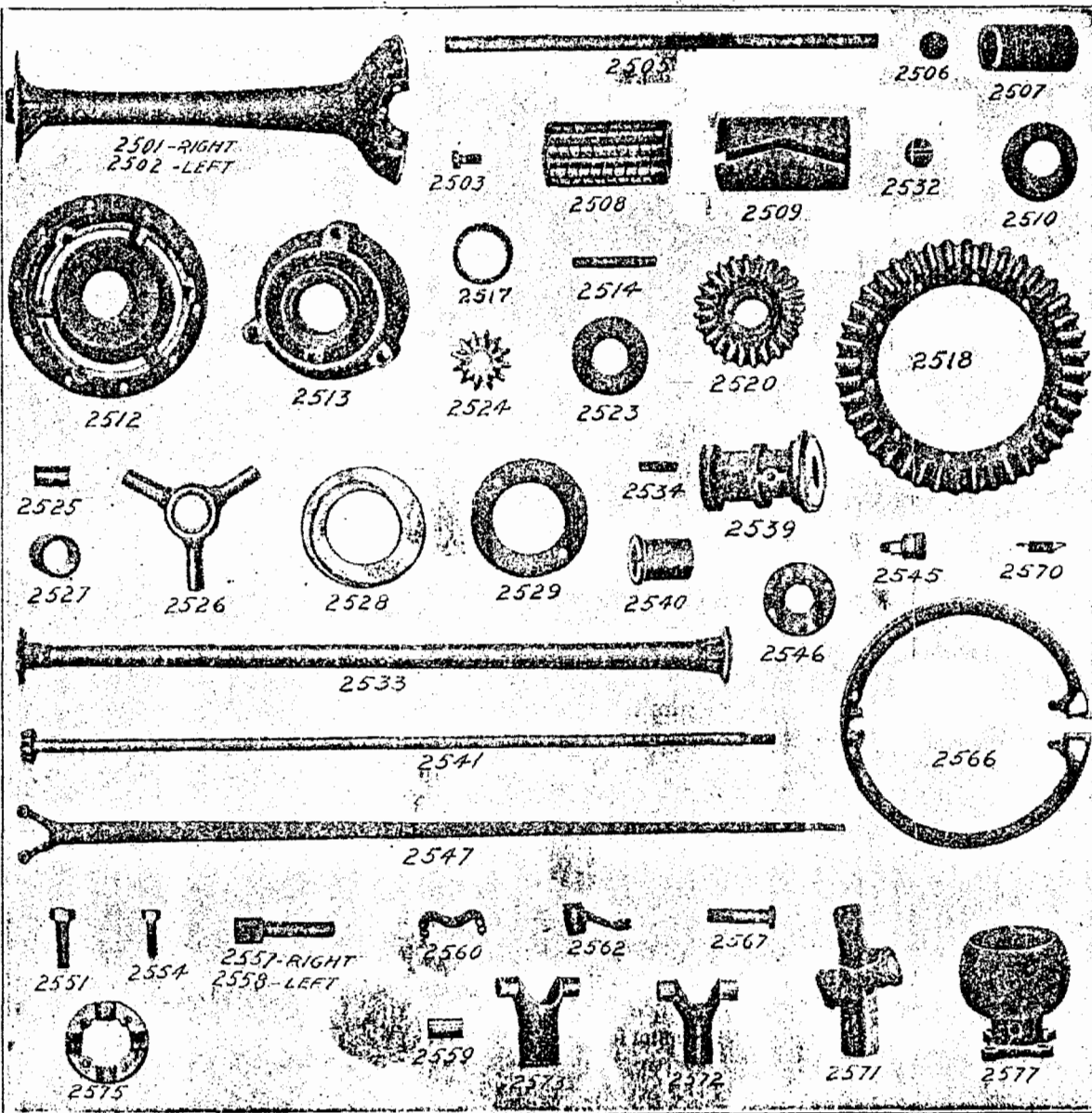
FORD MOTOR COMPANY,
Detroit, Mich.

Toperig, eight Tubgener, one Tuburbain, three Tubmergin for car No. 2841.

Signed _____

Toperig	Ship to me (us) by express.	Topflutch	When and how will you ship parts called for in my (our) telegram of—
Toperkleur	Ship by express to	Topfwasser	When and how will you ship parts called for in my (our) letter of—
Topermolen	Ship to me (us) by American Express	Topfgeld	Cancel order for parts our (my) telegram of—
Toperoker	Ship to me (us) by U. S. Express	Topfgicht	Cancel order for parts my (our) letter of—
Toperpool	Ship to me (us) by Dominion Express	Topfkiemer	Add to our (my) telegraph order of—
Topersteen	Ship to me (us) by freight	Topfartig	Will send duplicate shipment by—express at once.
Toper	Ship to me (us) by mail	Topfhaar	Will send duplicate order—freight at once.
Topfton	When and how did you ship parts called for in my (our) telegram of—		

When writing messages in code, print the code words in capital letters.



Rear Axle 56" Tread

Order by these Nos.	Description	Factory No.	Price.	Code Word.
2500	Rear axle assembly	95E	\$100 00	Tubial
2501	Axle housing right (drilled for 3/4" stud No. 2584).....	1B	18 00	Tuability
2501 1/4	Axle housing right (drilled for 13/32" stud No. 2584 1/4).....	1E	16 00	Tuaboi
2502	Axle housing left (drilled for 3/4" stud No. 2584)	2B	16 00	Tuadela
2502 1/2	Axle housing left (drilled for 13/32" stud No. 2584 1/2).....	2E	16 00	Tuadero
2503A	Axle housing bolt (9/16" long) ..	42A	05	
2503B	Axle housing bolt (26/32" long) ..	42B	05	
2503C	Axle housing bolt (1-1/16" long) ..	42C	05	
2503D	Axle housing bolt (1-1/8" long) ..	157	05	
2504	Axle housing bolt nut	44	02	Tuadials
2505	Axle shaft (Gear secured by double key and pin).....	48	2 50	Tuadifale
2505 1/2	Axle shaft (Gear secured by large key and collar).....	48E	2 50	Tuadifale
2506	Axle shaft washer (fibre)	39	05	Tuadifale
2507	Axle shaft babbit bearing	51	80	Tuadifal
2508	Axle shaft roller bearing	97	1 00	Tuadiflex
2509	Axle shaft R/B sleeve	170	40	Tuadifleg
2510	Axle housing cap	56	10	Tuadifoot
2510 1/2	Axle outer R/B steel washer	199	05	Tuadif
2510 3/4	Axle outer R/B felt washer	104	05	Tuadif
2511	Differential assembly		30 00	Tuadifera
2512	Differential case—left	10B	5 00	Tuadiferec
2513	Differential case—right	11	4 00	Tuadiferec
2514	Differential case stud	52	10	Tuadiferes
2515	Differential case stud nut	53	05	Tuadifera
2517	Differential case bushing (bronze)	19	60	Tuadifere
2518	Differential drive gear—10 teeth (Specify whether gear is fastened with screws or rivets).	12B	8 00	Tuadiferec
2519	Differential gear screw	103	02	Tuadiferec
2520	Differential gear (fastened to shaft with double key and pin)	13	2 50	Tuadiferec
2520 1/2	Differential gear (fastened to shaft with large key and collar)	13B	2 50	Tuadiferec
2521	Differential gear key (for gear 2520)	21B	10	Tuadiferec
2521 1/2	Differential gear key (for gear 2520 1/2)	36	05	Tuadiferec
2522	Differential gear pin			
2523	Differential gear thrust washer (fibre)	32	15	Tuadiferec
2524	Differential pinion—12 teeth	14	1 25	Tuadiferec
2525	Differential pinion bushing	93	25	Tuadiferec
2526	Differential spider with bushing	15	2 00	Tuadiferec
2527	Differential spider bushing	18	40	Tuadiferec
2528	Differential thrust plate washer (babbit)	30	50	Tuadiferec
2529	Differential thrust plate (steel)	31	20	Tuadiferec
2530	Differential thrust plate pin (13/32" long)	17	05	Tuadiferec
2531	Differential thrust plate pin (7/32" long)	37	05	Tuadiferec
2532	Differential housing oil plug	817	05	Tuadiferec
2534	Drive shaft and R/A housing stud (1 1/4" long).....	23	05	Tuadiferec
2535	D/S and R/A housing stud nut	8	05	Tuadiferec
2539	D/S housing rear bushing (specify bore)	24C	1 00	Tuadiferec
2540	D/S housing front bushing	69	60	Tuadiferec

Plate 1—Rear Axle Parts

Rear Axle—Continued

Order No. by these	Description	Factory No.	Price.	Code Word.
2541	D/S with pinion (specify diameter at rear bushing end).....	154	8 00	Tuavitate
2542	Drive shaft only (specify diameter at rear bushing end).....	87	3 50	Tuaviza
2543	D/S pinion—11 teeth	16	4 50	Tuavizde
2544	D/S pinion key (Woodruff)	57	10	Tuavizamo
2545	D/S grease cup	195R	25	Tuavizape
2546	D/S thrust washer (steel)	22B	15	Tuavizent
2547	Rear radius rod	152	2 50	Tuavizora
2548	Radius rod nut	77	05	Tuavizon
2549	Radius rod lock nut	78	05	Tuavizque
2551	Radius rod bolt	83	05	Tubaccusa
2554	Ball joint support bolt	79	05	Tubaccqus
2555	Ball joint support bolt nut	80	05	Tubacribu
2557	Hub cam shaft—right	92B	30	Tubact
2558	Hub cam shaft—left	61B	30	Tubactaro
2559	Hub cam shaft bushing	173	20	Tubactlon
2560	Hub brake spring	63	05	Tubactrom
2561	Hub spring rivet, per doz.	64	05	Tubadjuva
2562	Cam shaft lever	62	30	Tubadjuz
2563	Cam shaft lever pin	7	02	Tubadmovo
2564	Lever clevis pin	65	02	Tubagrego
2565	Lever clevis pin cotter	66	01	Tubagrest
2566	Brake shoe (cast iron)	55	75	Tubading
2567	Brake shoe support bolt	59	05	Tubaile
2568	Brake shoe support nut	60	05	Tubalar
2570	Brake shoe coil spring	67	05	Tubalbens
2571	Universal joint assembly	151	2 75	Tubalbid
2572	Joint knuckle (male)	45B	1 00	Tubalboat
2573	Joint knuckle (female)	46B	1 00	Tubalbay
2574	Joint knuckle pin	8	05	Tubalbula
2575	Joint ring complete	49	75	Tubalcaid
2576	Joint ring rivets, each	50	05	Tubalkins
2577	Joint housing	70	1 00	Tubaltenu
2578	Joint housing plug	75	05	Tubambige
2579	Ball cap oil hole plug	156	10	Tubambros
2580	Ball cap felt gasket	1518	10	Tubamigue

Drive Shaft Assembly

2581	D/S housing assembly (drilled for 3/8" stud)		14 00	Tubamn
2581 1/2	D/S housing assembly (drilled for 13/32" stud)		14 00	
2582	D/S housing (drilled for 3/8" stud)	74C	8 00	Tubamno
2582 1/2	D/S housing (drilled for 13/32" stud)	74D	8 00	
2583	D/S roller bearing housing (drilled for 3/8" stud).....	191	1 00	Tubamla
2583 1/2	D/S roller bearing housing (drilled for 13/32" stud).....	191B	1 00	
2584	D/S roller bearing stud (3/8" x 4-7/16")	193	10	Tubamlen
2584 1/2	D/S roller bearing stud (13/32" x 4 1/8")	183B	10	
2585	D/S roller bearing housing stud nut (3/8")	184	02	Tubamluc
2585 1/2	D/S roller bearing housing stud nut (13/32")	184B	02	
2586	D/S roller bearing housing set screw	101	05	Tubamdent

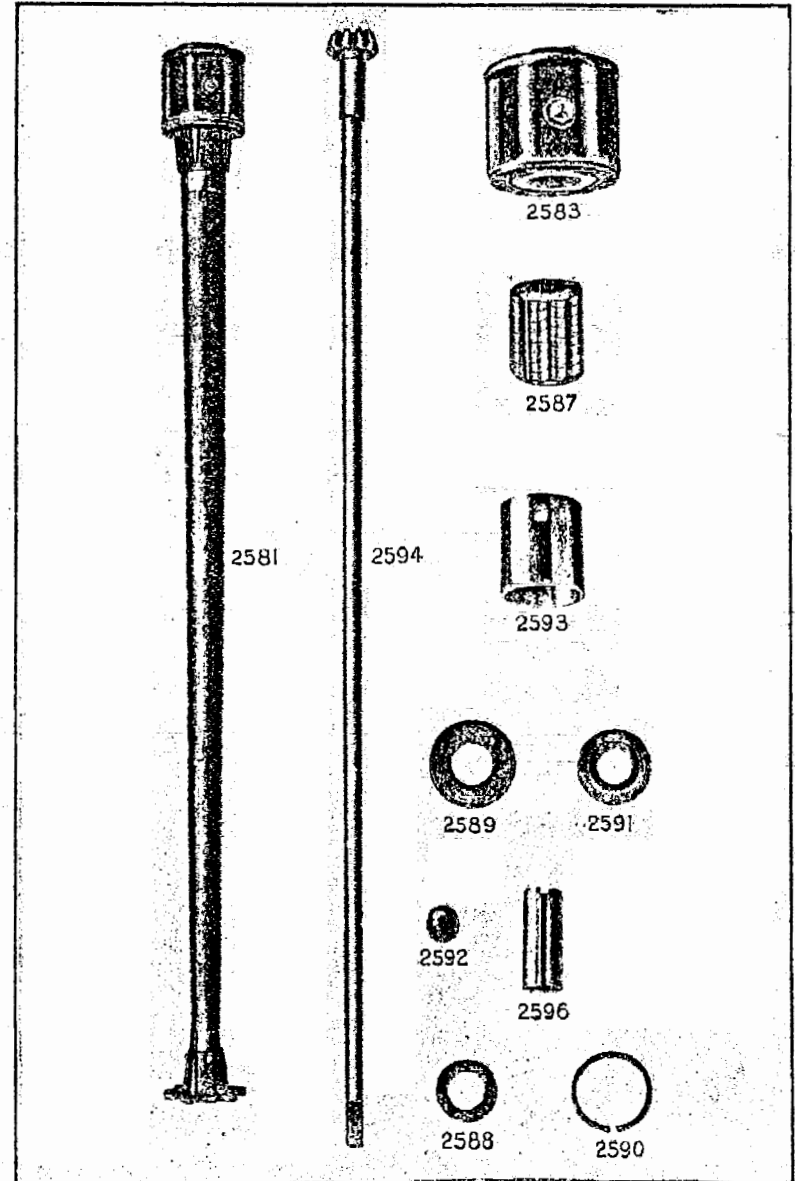


Plate 2—Roller Bearing Drive Shaft Parts

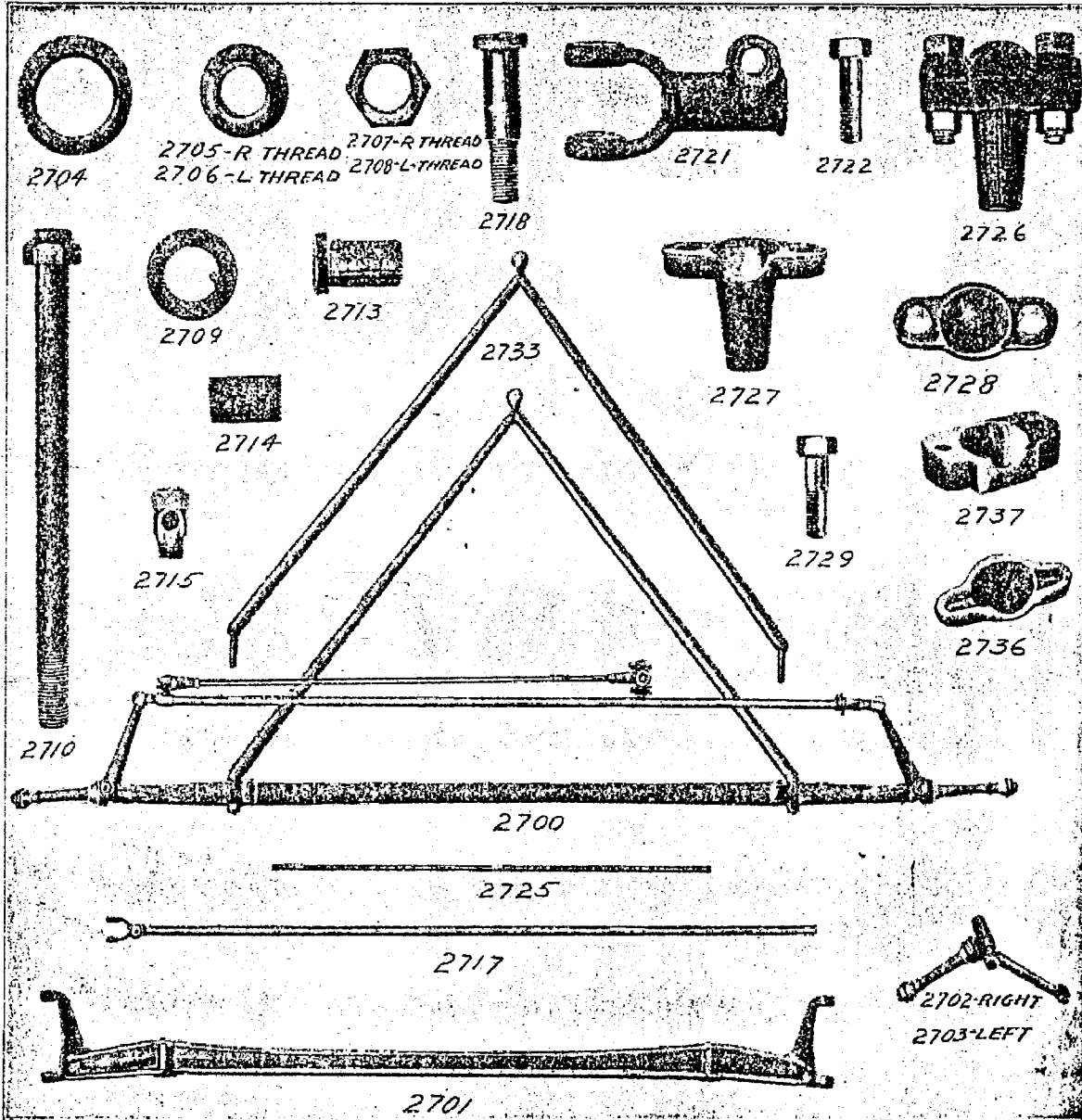


Plate 3—Front Axle Parts

Drive Shaft Assembly—Continued

Order by these Nos.	Description	Factory No.	Price.	Code Word
2587	D/S roller bearing	192	2 50	Tubamab
2588	D/S roller bearing distance plate ..	106	10	Tubamging
2589	D/S ball race	186	60	Tubamgu
2590	D/S ball retainer	190	05	Tubamgone
2591	D/S ball thrust collar	188	30	Tubamg
2592	D/S ball bearings (15) each	187	04	Tubamg
2593	D/S roller bearing sleeve	107	50	Tubamery
2534	D/S and pinion	154B	8 00	Tubamly
2595	D/S with sleeve fitted (straight shaft)	87C	3 50	Tubamend
2595 1/4	D/S only (tapered end)	87D	3 00	
2595 1/2	D/S with sleeve and ball bearing assembly		4 00	
2595 3/4	D/S with pinion and ball bearing assembly		8 00	Tubamora
2596	D/S sleeve	163B	50	Tubamora
2597	D/S pinion (3/8" straight bore) ..	16B	4 50	Tubamora
2597 1/2	D/S pinion (for tapered shaft) ..	16C	4 50	
2598	D/S castle nut	124	15	

Rear Axle 60" Tread

2599	Rear axle assembly (roller bearing type)	1727C	100 00	Tubamis
2600	Rear axle housing—right (drilled for 3/8" stud No. 2584)	1701D	16 00	Tubamit
2600 1/2	Rear axle housing—right (drilled for 13/32" stud No. 2584 1/2) ..	1701E	16 00	Tubamit
2601	Rear axle housing—left (drilled for 3/8" stud No. 2584)	1702D	16 00	Tubamote
2601 1/2	Rear axle housing—left (drilled for 13/32" stud No. 2584 1/2) ..	1702E	16 00	Tubamor
2602	Rear axle shaft (33" long; gear secured by double key and pin) ..	1703	2 50	Tubamory
2602 1/2	Rear axle shaft (33" long; gear secured by large Woodruff key and collar)	1703B	2 50	Tubant
2604	Rear radius rod	1726	2 50	Tubantully
2605	Hub brake pull rod—right	1710B	45	Tubapano
2606	Hub brake pull rod—left	1721	45	Tubapash

Front Axle 56" Tread

2690	Front axle assembly	261B	24 00	Tubapena
2691	Front axle only	202B	8 00	Tubapent
2694	Spindle body—right	203B	2 50	Tubaper
2695	Spindle body—left	204B	2 50	Tubapil
2696	Spindle arm	270	1 00	Tubapan
2697	Spindle arm nut	272	10	Tubapan
2702	Spindle assembly—right	203A	3 50	Tubapers
2703	Spindle assembly—left	204A	3 50	Tubapersic
2704	Stationary cone (inside)	205	30	Tubapkat
2705	Adjusting cone—right thread ..	206	25	Tubapket
2706	Adjusting cone—left thread	207	25	Tubapket
2707	Spindle nut—right thread	208B	05	Tubapulo
2708	Spindle nut—left thread	209B	05	Tubapules
2709	Spindle washer	210	05	Tubapulin
2710	Spindle bolt	211B	50	Tubapulin
2711	Spindle bolt nut	212	05	Tubapulin
2713	Spindle body bushing (pair)	223	50	Tubapulin
2714	Spindle arm bushing	225	20	Tubapulin
2715	Spindle offer	218	15	Tubaresco
2716	Spindle connecting rod with yoke ..	264	2 60	Tubarmale
2717	Spindle con. rod with ball pin only	268	2 00	Tubasper

Front Axle 56" Tread—Continued

Order by these Nos.	Description	Factory No.	Price.	Code Word.
2718	Spindle con. rod bolt (2-7/16")...	216	05	Tubassam
2719	Spindle con. rod bolt nut	231	05	Tubasese
2721	Spindle con. rod yoke	248	60	Tubastam
2722	Steering yoke clamp bolt (1-5/32" long)	250	05	Tubastane
2723	Steering yoke clamp bolt nut	251	02	Tubastape
2725	Steering gear con. rod only (1/2" x 20 th'd)	258	20	Tubastsi
2725 1/2	Steering gear con. rod only (1/2" x 13 th'd)	258B	30	Tubasta
2726	Ball socket assembly	266	1 00	Tubastato
2726 1/2	Ball socket assembly (for 2725 1/2)	266B	1 00	Tubta
2727	Ball socket	253	50	Tubastava
2727 1/2	Ball socket (for 2725 1/2)	253B	50	Tubtas
2728	Ball socket cap	254B	20	Tubasto
2729	Ball socket bolt	255	05	Tubastral
2730	Ball socket nut	256	03	Tubaud
2732	Ball socket lock nut (20 th'd)	259A	05	Tubaurabs
2732 1/2	Ball socket lock nut (13 th'd)	259B	05	Tubaubs
2733	Front radius rod	263	4 00	Tubaurad
2734	Front radius rod nut	245	05	Tubaurstos
2736	Front radius ball cap	217	20	Tubauster
2738	Front radius rod ball cap screw (3/8"—24 th'd)	810	05	Tubabajlas
2739	Front radius rod ball cap screw (3/8"—16 th'd)	810B	05	Tubaj

Front Axle 60" Tread

2760	Front axle only	1720B	8 00	Tubazit
2761	Steering spindle connecting rod	1725	2 60	Tubhajnon
2762	Steering gear con. rod only	1719	30	Tubhajtoz

Wheels

2800	Front wheel—red	291	8 00	Tubbace
2801	Front wheel—green	291	8 00	Tubbaddon
2802	Front wheel (Specify Pearl or French gray)	291	8 00	Tubbagrot
2802 1/2	Front wheel—blue	291	8 00	Tubbagoat
2803	Front hub assembly (1903-10 type)	200	6 00	Tubbaldas
2804	Outer race (small)	234	50	Tubbalbe
2805	Inner race (large)	235	60	Tubbame
2806	Outer ball retainer	236	10	Tubbanoous
2807	Inner ball retainer	237	10	Tubbabante
2808	Dust ring (steel)	238	25	Tubbaste
2809	Felt washer	239	05	Tubbaliano
2810	Large balls (1/2")	241	05	Tubbiase
2811	Small balls (3/8")	249	04	Tubblavan
2812	Rear wheel—red	99	8 00	Tubbibets
2813	Rear wheel—green	99	8 00	Tubbicor
2814	Rear wheel (Specify Pearl or French gray)	99	8 00	Tubbidado
2814 1/2	Rear wheel—blue	99	8 00	Tubbidonor
2815	Rear hub (1903-10 type)	102	5 00	Tubbibfms
2816	Rear hub key	26	05	Tubbfo
2817	Rear hub pin	27	02	Tubbifent
2818	Rear hub brake drum	3	1 00	Tubbiello
2819	Hub cap	240	60	Tubbisato
2820	Hub bolt (2" x 5/16")	28A	05	Tubbracha
2821	Hub bolt nut (5/16"—18 th'd)	28A	02	Tubbrado
2822	Hub flange (5 1/2" dia.)	233A	60	Tubbrevia
2823	Front hub assembly (1911 type)	200B	6 00	Tubbilas
2824	Rear hub assembly (1911 type)	102B	5 00	Tubbibfms
2825	Hub bolt (2 x 3/8")	28A	05	Tubbrach
2826	Hub bolt nut (3/8"—16 th'd)	28B	02	Tubrad
2827	Hub flange (6" dia.)	233B	60	Tubrev

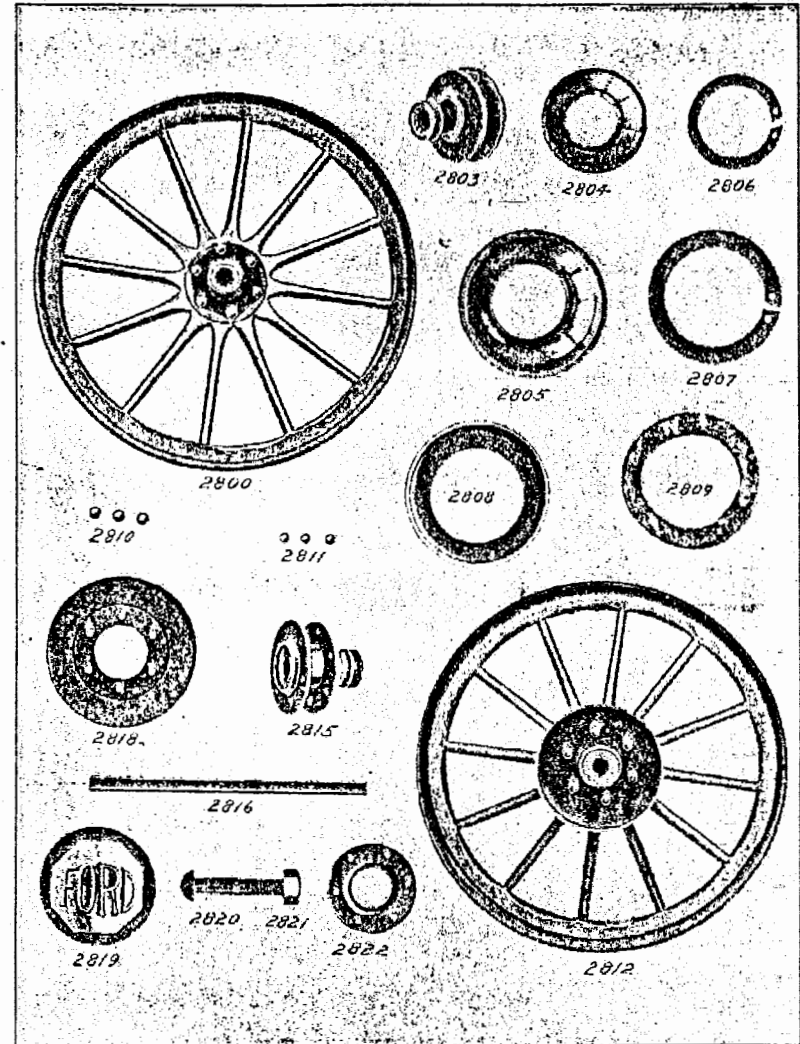


Plate 4—Wheels and Parts

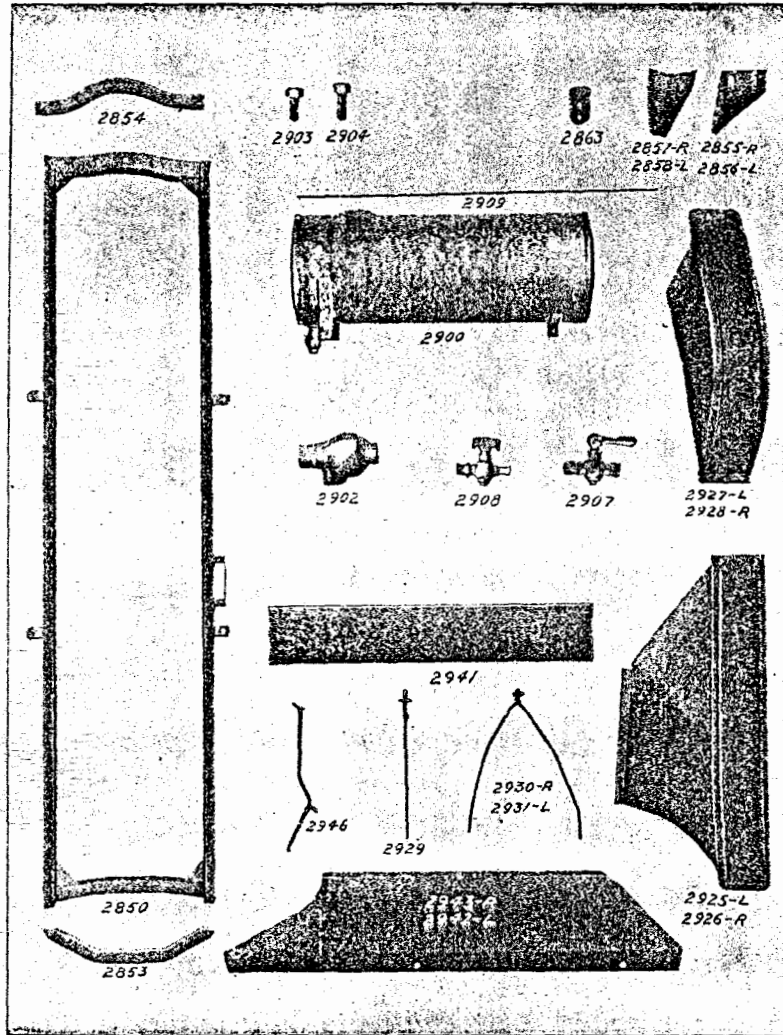


Plate 5—Frame, Fender and Tank Parts

Order
by these
Nos.

		Frame			
Description	Factory No.	Price.	Code	Word.	
2850	Frame assembly	300	15	60	Tubcandid
2851	Side member—right	301	6	00	Tubacarre
2852	Side member—left	302	5	00	Tubeaudal
2853	Front cross member	303	2	50	Tubcaute
2854	Rear cross member	304	2	50	Tubcaurn
2855	Front corner bracket—right	305	50		Tubcavabo
2856	Front corner bracket—left	306	50		Tubcava
2857	Rear corner bracket—right	307	50		Tubcaves
2858	Rear corner bracket—left	308	50		Tubcaveux
2863	Body bracket (on frame)	344	15		Tubcentda
2864	Side member—left (Runabout)	383	5	00	
2865	Side member—right (Runabout)	384	5	00	

Runabout—Gasoline Tank

2875	Gasoline tank (16 1/2 gals.)	1990	10	00	Tubcal
2876	Filler cap	2315	30		Tubcar
2877	Sediment bulb	2341	30		Tubcane
2878	Feed pipe	1394	40		Tubcasse
2879	Feed pipe clip	1395	05		Tubcarn
2880	Tank bolt (5/16 x 2 1/2")	2345	05		Tubcat
2881	Tank bolt nut	2347	03		Tubca
2882	Tank bolt washer	2346	01		Tubces
2883	Tank stop cock	1343	35		Tubcer

Touring Car—Gasoline Tank

2900	Gasoline tank (10 gals)	1303	4	00	Tubcerna
2901	Filling plug	1317	30		Tubcerno
2902	Sediment bulb	1319	35		Tubcernut
2903	Tank bolt (25/32" long)	1320	05		Tubclavio
2904	Tank bolt (29/32" long)	1323	05		Tubcommun
2905	Tank bolt nut	1321	03		Tubconque
2907	Stop cock	1343	35		Tubconsay
2908	Pet cock	1342	25		Tubcontin
2909	Feed pipe	1364	40		Tubcoxques
2910	Feed pipe pack nut	1374	05		Tubcoquo

Fenders 56" Tread

2925	Front fender—left (round extension cap front end) specify color	1413	4	00	Tubcorted
2925 1/2	Front fender—left (square cap front end) specify color		4	00	Tubcorture
2926	Front fender—right (round extension cap front end) specify color	1414	4	00	Tubcortex
2926 1/2	Front fender—right (square cap front end) specify color		4	00	Tubcortexia
2927	Rear fender—left (with hole in apron for fender iron) specify color	1415B	3	50	Tubcosyn
2927 1/2	Rear fender—left (without hole in apron for fender iron) specify color	1415	3	50	Tubcortom
2928	Rear fender—right (with hole in apron for fender iron) specify color	1416B	3	50	Tubcoyter
2928 1/2	Rear fender—right (without hole in apron for fender iron) specify color	1416	3	50	Tubcoatal
2929	Front fender iron (right or left)	343	1	00	Tubcranfa
2930	Rear fender iron (right)	342B	1	50	Tubcrown
2931	Rear fender iron (left)	349B	1	50	Tubcroylet
2932	Fender iron bolt (29/32" long)	345	05		Tubcruned
2933	Fender iron bolt (1-1/32" long)	347	05		Tubcrnot
2934	Fender iron bolt nut	346	03		Tubcanaid
2935	Fender eye bolt	1942	15		Tubcunozr
2936	Fender eye bolt washer	1943	03		Tubcunuaht
2937	Fender eye bolt nut	1944	03		Tubcunnuth

Running Board 56" Tread

Order by these Nos.	Description	Factory No.	Price.	Code Word.
2941	Running board (Pressed steel)	1410B	1 00	Tubcunutt
2942	Running board metal shield—left	1408	2 50	Tubcurvos
2943	Running board metal shield—right	1409	2 50	Tubcustos
2944	Running board fender bolt	1944	05	Tubcullle
2945	Running board fender bolt nut	1347	02	Tubdehous
2946	Running board bracket	336	75	Tubdeacana
2947	Running board truss rod (front)	338	40	Tubdecupe
2947½	Running board truss rod (rear)	371	40	Tubdecup
2948	Running board truss rod nut	339	02	Tubdefend
2949	Running board bolt	340B	05	Tubdegnoy
2950	Running board bolt nut	341	02	Tubdelero
2951	Running board fender bolt washer	1959	03	Tubdeloth
2952	Running board metal shield for Town Car (left)	1731	2 50	Tubdelom
2953	Running board metal shield for Town Car (right)	1732	2 50	Tubdelore

Fenders and Running Boards 60" Tread

3875	Front fender—right	1715	4 00	Tubdelta
3876	Front fender—left	1716	4 00	Tubdelsog
3877	Front fender iron (right and left)	1713	1 00	Tubdeming
3878	Rear fender iron—left	1711	1 50	Tubdentick
3879	Rear fender iron—right	1712	1 50	Tubdentory
3880	Running board metal shield—right	1717	2 50	Tubfrpyic
3881	Running board metal shield—left	1718	2 50	Tubdegrin
3882	Running board brackets, each	1714	75	Tubdercip
3883	Running board truss rods, each	1708	40	Tubdestirn
3884	Running board metal shield for Town Car—right	1732	2 50	
3885	Running board metal shield for Town Car—left	1731	2 50	

Running Boards

(Used on cars numbered below 2500).

1410	Running board complete—right		4 00	Tubcurote
1411	Running board complete—left		4 00	Tubcurral
1412	Running board rubber matting		1 00	Tubcurrod
1421	Running board brass (rear end)		30	Tubcutano
1422	Running board brass (left outside)		75	Tubdamus
1423	Running board brass (front end)		30	Tubdeacon
1424	Running board brass screw		01	Tubdealas
1429	Running board brass (right outside)		75	Tubdealbo
1486	Running board brass (left outside)		75	Tubdean
1487	Running board brass (right inside)		75	Tubdeary
1488	Running board brass screw (½ inch)		01	Tubdehamur
1344	Running board fender bolt		05	Tubdeble
1347	Running board fender bolt nut		02	Tubdehous
240	Running board bolt		05	Tubdela

Motor (Thermo-Syphon)

3000	Cylinder only	400B	24 00	Tubdlat
3001	Cylinder head	401C	4 00	Tubdianon
3001½	Cylinder head for metric thread foreign spark plug			
3002	Cylinder head copper gasket	402B	75	Tubdiboul
3003	Cylinder head cap screw (7/16 x 2-7/16")	483B	05	Tubdticken
3003½	Cylinder head cap screw		05	
3004	Cylinder head outlet connection	446C	25	Tubdictol

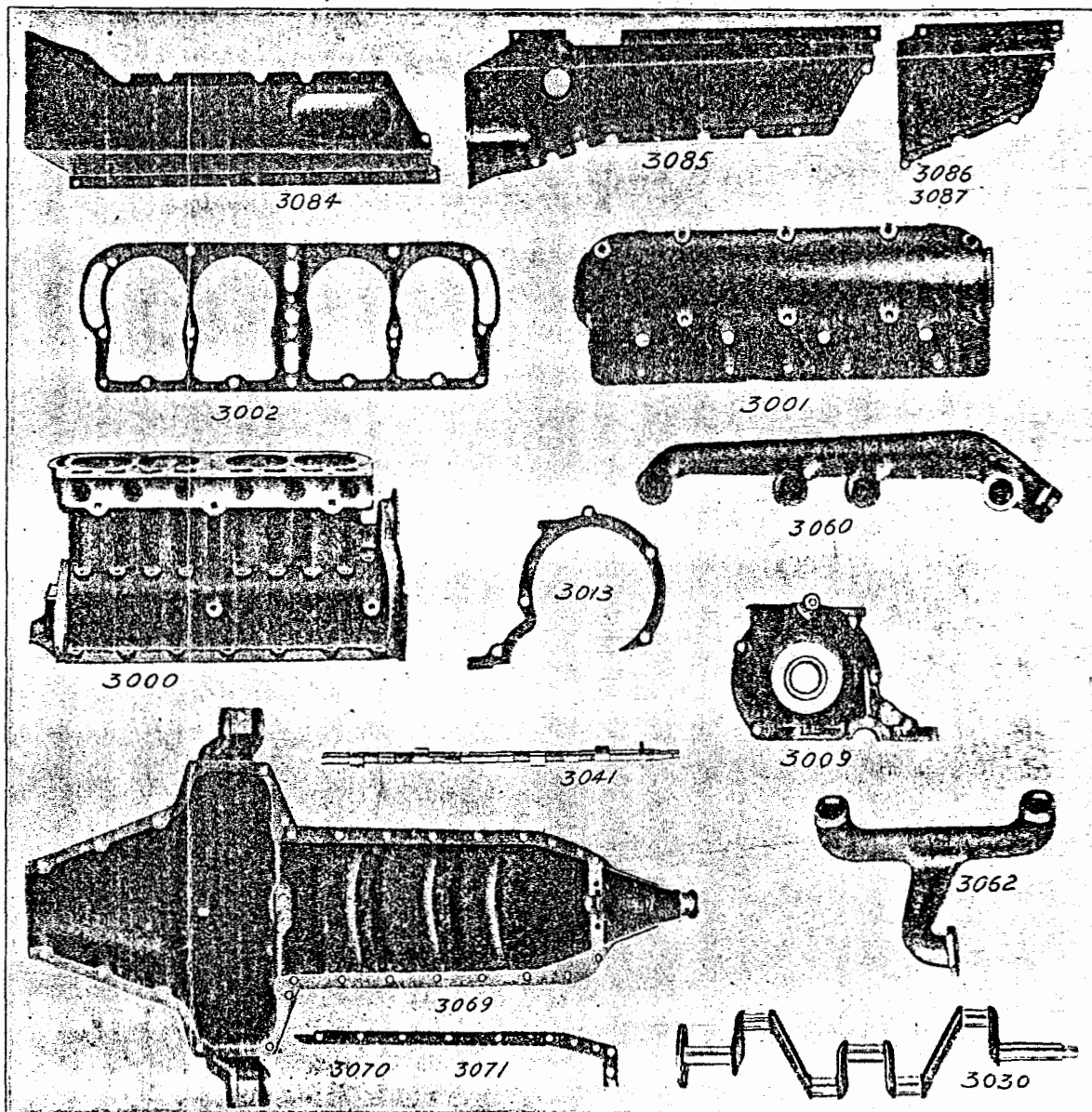
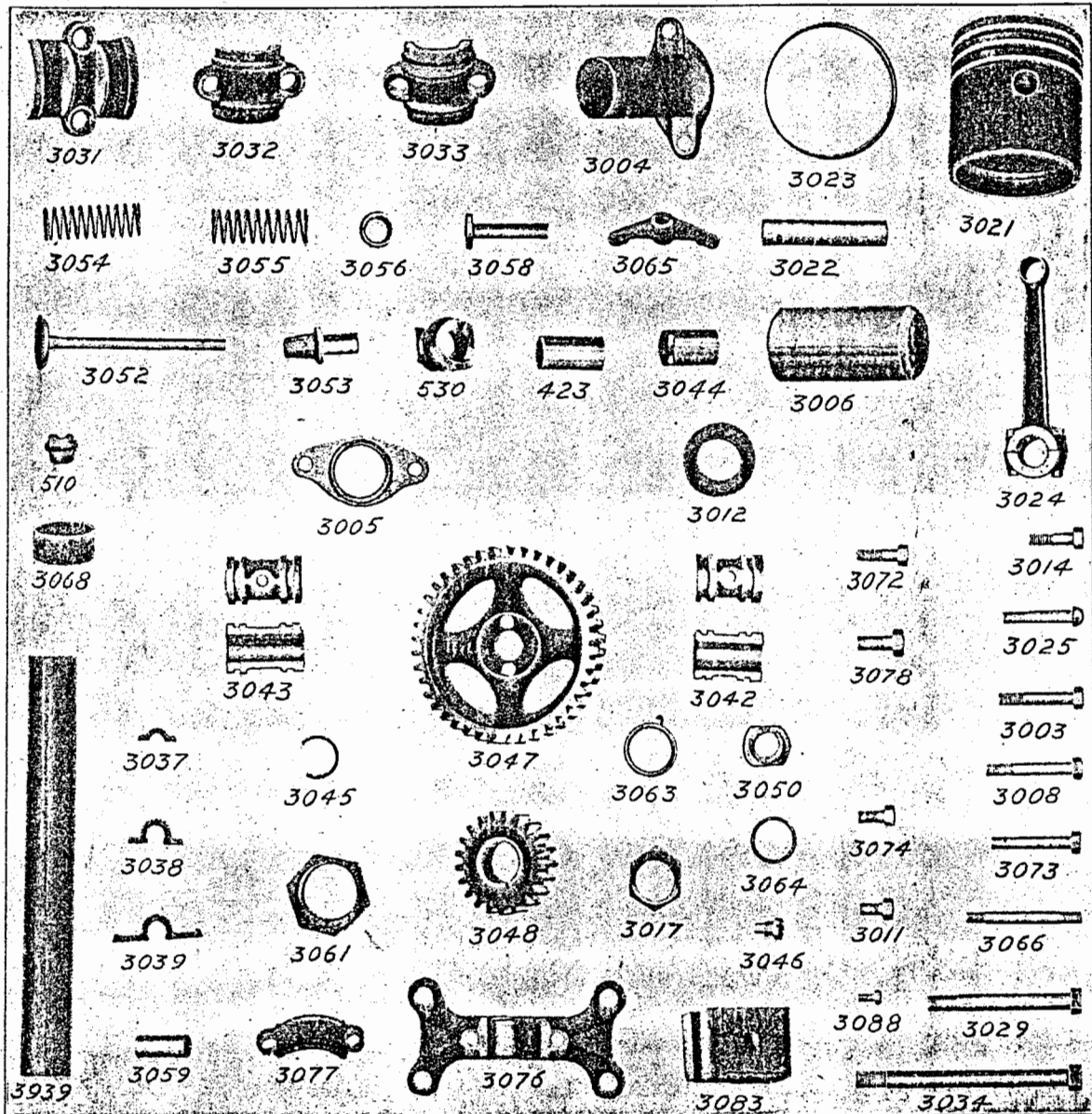


Plate 6—Motor Parts



Motor (Thermo-Syphon)—Continued

Order by these Nos.	Description	Factory No.	Price.	Code Word.
3005	Cylinder head outlet connection copper gasket	445B	15	Tubdidrom
3006	Cylinder head outlet hose (3 1/4" long x 2" inside)	448B	30	Tubdienez
3007	Cylinder head outlet hose clip	607B	10	Tubdiddo
3008	Cylinder head outlet connection screw (1-21/64" long)	550C	05	Tubdigitor
3009	Cylinder cover (front end)	403B	1 25	Tubdivory
3010	Cylinder cover bolt (13/16" long)	589	05	Tubdilosty
3011	Cylinder cover cap screw	432	05	Tubdimida
3012	Cylinder cover felt	504	10	Tubditasm
3013	Cylinder cover paper liner	505B	05	Tubditack
3014	Cylinder cover bolt (1-7/32" long)	484	05	Tubditolt
3015	Cylinder water inlet connection (cast iron)	442B	25	Tubditoyer
3016	Cylinder water inlet connection screw (1 1/4" long)	597	05	Tubditunek
3018	Cylinder water inlet gasket	596	15	Tubdituray
3019	Cylinder water jacket plug	557	10	Tubdiwid
3020	Piston complete (3 ring type)	586B	2 50	Tubdifions
3021	Piston only (3 ring type)	418C	2 00	Tubdifiert
3022	Piston pin	419B	50	Tubdifolt
3023	Piston ring	422	17	Tubdoctor
3024	Connecting rod (no bushing in upper end)	587B	2 50	Tubdoadder
3025	Connecting rod cap bolt	489B	05	Tubdoughot
3026	Connecting rod cap bolt nut	490	03	Tubduable
3027	Connecting rod cap bolt cotter pin	500	01	Tubduemus
3029	Connecting rod clamp screw (1" long)	578	05	Tubduetur
3030	Crank shaft	498B	12 00	Tubdubery
3031	Crank shaft rear bearing cap	405B	1 10	Tubdunioic
3032	Crank shaft front bearing cap	406B	1 00	Tubdwort
3033	Crank shaft center bearing cap	407B	1 00	Tubdupcat
3034	Crank shaft bearing bolt (center and front) 6-1/16" long	408	15	Tubdupplas
3035	Crank shaft bearing bolt nut	409	05	Tubdorrum
3036	Crank shaft rear bearing bolt (4-7/16" long)	478	15	Tubduros
3037	Crank shaft center bearing brass liner	501B	05	Tubdecorn
3038	Crank shaft center bearing brass liner	502B	05	Tubdedurl
3039	Crank shaft rear bearing brass liner (Brass liners furnished .002, .004 or .006 thick as required)	503B	05	Tubdenock
3040	Crank shaft starting pin (2-11/16" long)	529B	05	Tubdepcir
3041	Cam shaft	410	6 00	Tuberamid
3042	Cam shaft front bearing	411	50	Tuberanol
3043	Cam shaft center bearing	412B	40	Tuberwrox
3044	Cam shaft rear bearing (bronze)	413	30	Tubexcuse
3045	Cam shaft bearing ring	534	05	Tubexplic
3046	Cam shaft bearing set screw	414	05	Tubfeudo
3047	Cam shaft gear—large	415	1 50	Tubfeum
3048	Cam shaft gear—small	416	1 00	Tubfeungs
3049	Cam shaft gear dowel pin	417	05	Tubfetros
3050	Cam shaft large gear lock nut	475	15	Tubflice
3051	Cam shaft small gear key	477	05	Tubfolion
3052	Exhaust and inlet valve	424B	30	Tubfolion
3053	Exhaust and inlet valve bushing	428	15	Tubfolom
3054	Intake valve spring	430	10	Tubfumcs
3055	Exhaust valve spring	431	10	Tubfuscus
3056	Valve spring seat	425	05	Tubfosk

Plate 7 Motor Parts

Motor (Thermo-Syphon)—Continued

Order by these Nos.	Description	Factory No.	Price.	Code Word.
3057	Valve spring seat pin	429	01	Tubgemine
3059	Push rod	426	30	Tubgener
3059	Push rod bushing	427	20	Tubgenus
3060	Exhaust pipe	511	1 50	Tubgibeux
3061	Exhaust pipe pack nut—brass	518	40	Tubglabre
3062	Inlet pipe	512	2 00	Tubglacal
3063	Inlet and exhaust pipe gasket	513	05	Tubgronde
3064	Inlet and exhaust pipe gland	514	05	Tubhashtab
3065	Inlet and exhaust pipe clamp	515	15	Tubhasto
3066	Inlet and exhaust clamp stud (3-5/16" long)	516	05	Tubhircos
3067	Inlet and exhaust pipe clamp nut	517	03	Tubhircum
3068	Breather pipe (brass 1 1/4" long)	582	20	Tubicurry
3069	Crank and trans. case assembly	1526B	20 00	Tubidreso
3069 1/2	Crank case front and bearing		1 50	
3070	Crank case and cyl. gasket—left	886	10	Tubieron
3071	Crank case and cyl. gasket—right	887	10	Tubicron
3072	Crank case and cyl. cover cap screw	433	05	Tubrfott
3073	Crank case arm bolt—side (2 1/4" long)	479	05	Tubigttes
3074	Crank case arm bolt—top (25/32" long)	480	05	Tubilla
3075	Crank case arm bolt nut	481	03	Tubilmer
3076	Crank case front end frame bearing	320B	60	Tubilnasty
3077	Crank case front end bearing cap	321	40	Tubilness
3078	Crank case front end bearing screw	322	05	Tubilmima
3079	Crank case overflow pet cock	1515	25	Tubimock
3080	Trans. drain cup—plug	817	05	Tubimos
3081	Crank case oil tube	543B	50	Tubimudy
3082	Crank case oil tube clamp (on magneto coil support)	548B	10	Tubimughtot
3083	Trans. case arm block—wood	890	05	Tubinana
3084	Engine pan—right	1330	60	Tubinanis
3085	Engine pan—left	1331	60	Tubinda
3086	Trans. pan—left	1332	30	Tubindate
3087	Trans. pan—right	1333	30	Tubindebat
3088	Engine and trans. pan bolt	1335	05	Tubindece
3089	Engine and trans. pan nut	1336	02	Tubundes

Motor—Pump Circulation

(Used on Cars 1 to 2500)

400	Cylinder with head assembled	23 00	Tubdelega
400A	Cyl. only (7/16" holes for cap screws)	24 00	Tuonelock
401	Cyl. head (3/8" holes for cap screws)	4 00	Tubdelury
401B	Cyl. head (7/16" holes for cap screws)	4 00	Tubdement
402	Cyl. head gasket	75	Tubdented
403	Cyl. cover (front end)	1 25	Tubdepost
483	Cyl. head cap screw (3/8")	05	Tubdigens
483B	Cyl. head cap screw (7/16")	05	Tubdepostur
446	Cyl. head outlet brass connection (3/8")	60	Tubdiacox
446B	Outlet brass connection (7/16" bolt)	60	Tubdibbel
550	Outlet brass conn. screw (3/8")	05	Tubdigite
550B	Outlet conn. screw (7/16")	05	Tubdihot
445	Outlet brass conn. gasket	15	Tubdiala
448	Outlet hose (1 1/4" inside x 1/2")	40	Tubdiale

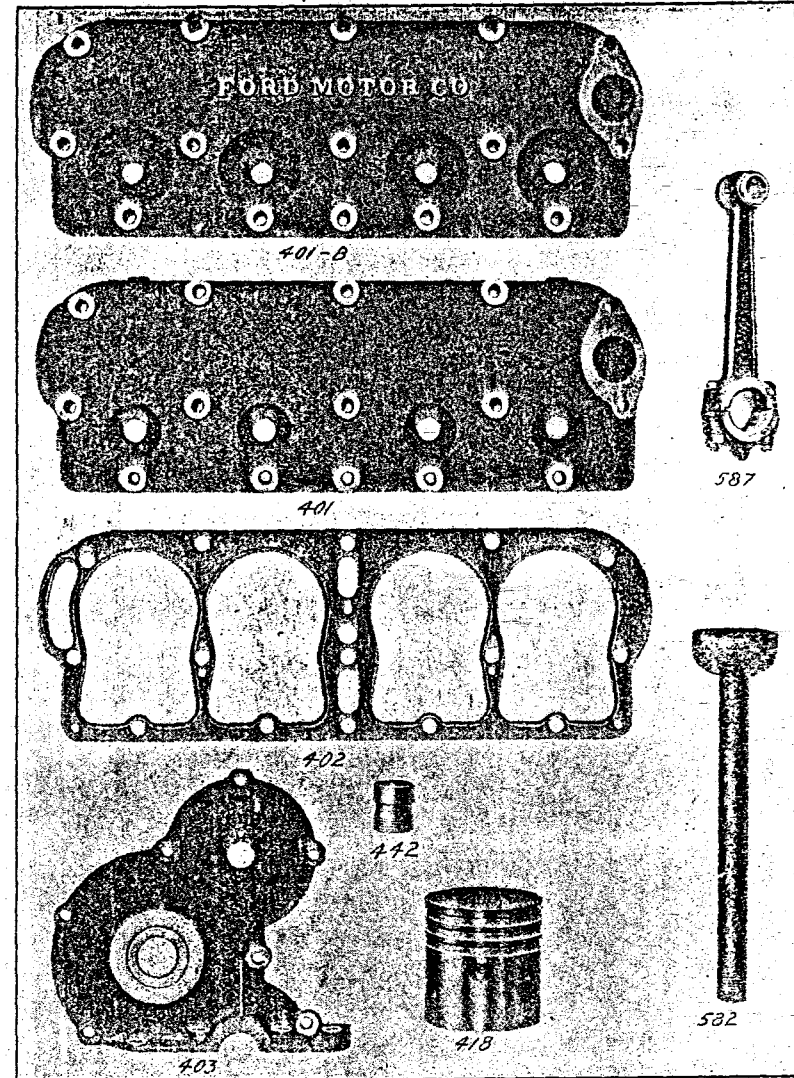


Plate 8—Motor Parts

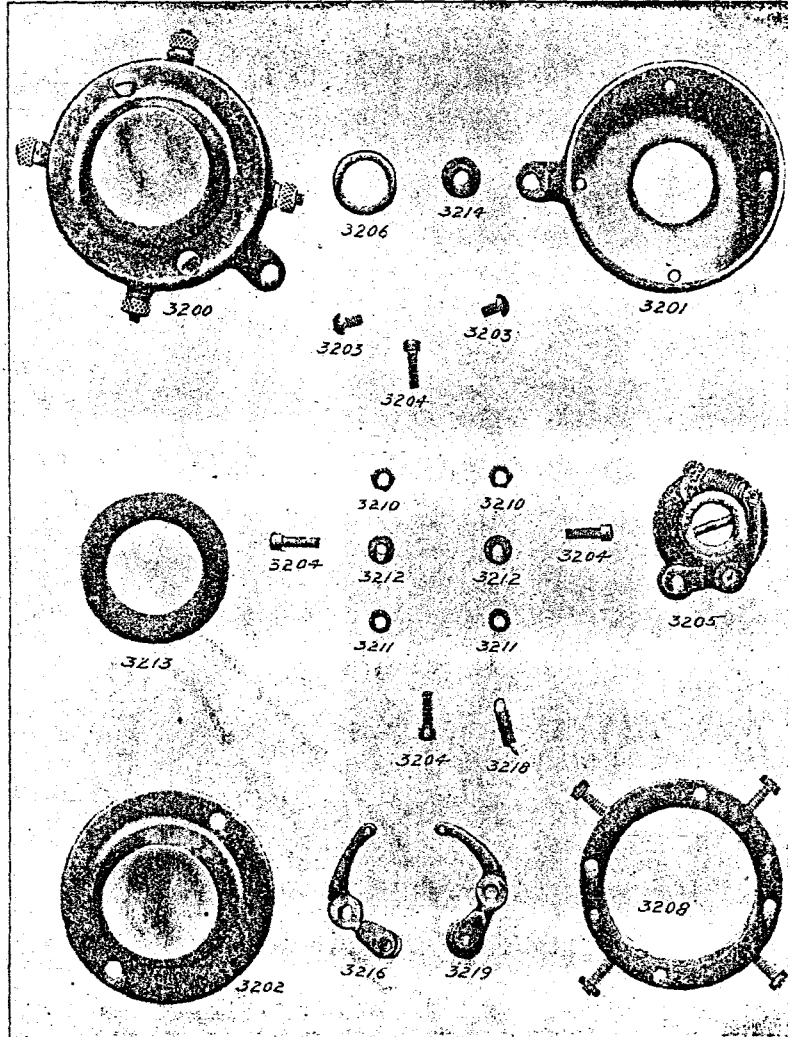


Plate 8—Commutator Parts

Motor—Pump Circulation—Continued

Order Nos. by these	Description	No. Factory	Price.	Code Word.	
554	Outlet hose clip		10		
505	Cyl. cover paper liner		10	Tubditas	
442	Cyl. water inlet brass connection		30	Tubditid	
444	Cyl. water inlet pack nut		15	Tubdituro	
563B	Piston assembly (3 ring type—used with connecting rod having piston pin bushing).....		50	Tubdivine	
418	Piston only	2	00	Tubdivisat	
419	Piston pin		35	Tubdoceas	
420	Piston pin screw		05	Tubdoceba	
567	Connecting rod assembly (bushing in head end).....		3	00	Tubdolor
423	Connecting rod piston pin bushing		25	Tubducton	
498	Crank shaft	12	00	Tubdument	
530	Crank shaft ratchet		40	Tubepinex	
529	Crank shaft ratchet pin		02	Tubequal	
543	Crank case oil tube		50	Tubepost	
520	Crank case front end frame bearing		60	Tubflnem	
582	Breather pipe (1" tube).....		90	Tubhrido	
500	Crank case and trans. lower case.	20	00	Tubdidres	

Commutator

3200	Commutator	404	2	75	Tubindud
3201	Commutator body	457C	1	00	Tubinental
3201B	Commutator body		1	00	
3202	Commutator cover	461B	15		Tubinfer
3202 1/2	Commutator cover thumb nut	634	05		Tubinferol
3203	Commutator cover screw (R. H. 1/2" long)	495	02		Tubinfos
3203B	Commutator cover screw (L. H. 1/2" long)		02		
3204	Commutator body screw	463	02		Tubunfoud
3205	Commutator brush (State size of roller)	574	75		Tubinfule
3206	Commutator brush cap (steel) ..	468	05		Tubinsule
3207	Commutator brush cap pin	466	02		Tubintrat
3208A	Commutator fibre (5/8" thick x 2 3/4" O. D.)	575A	1	00	
3208B	Commutator fibre (3/4" thick x 2-11/16" O. D.)	575B	1	00	
3208C	Commutator fibre (11/16" thick x 2-13/16" O. D.)	575C	1	00	
3209	Commutator contact point	464	10		Tubinvine
3210	Commutator contact point nut ..	472	05		Tubinvito
3211	Commutator contact point fibre insulator	473	05		Tubirate
3212	Commutator thumb nut-brass ..	467	05		Tubiranno
3213	Commutator felt ring	474	10		Tubiratco
3214A	Commutator roller (5/16" x 5/8") ..	470B	10		
3214B	Commutator roller (5/16" x 1/2") ..	470A	10		
3214C	Commutator roller (15/32 x 5/8) ..	470C	10		
3214D	Commutator roller (7/16 x 11/16) ..	470D	10		
3215A	Commutator roller pin (3/16 x 1/2")	465A	02		
3215B	Commutator roller pin (3/16 x 5/8)	465B	02		
3215C	Commutator roller pin (7/32 x 21/32)	465C	02		
3216	Commutator roller arm (State size roller)	460B	30		Tubireld
3217	Commutator roller arm pin	476	02		Tubiremo
3218	Commutator roller spring	469	05		Tubirriams
3219	Commutator roller and arm	571	40		Tubireno
3220	Commutator lock nut	471	10		

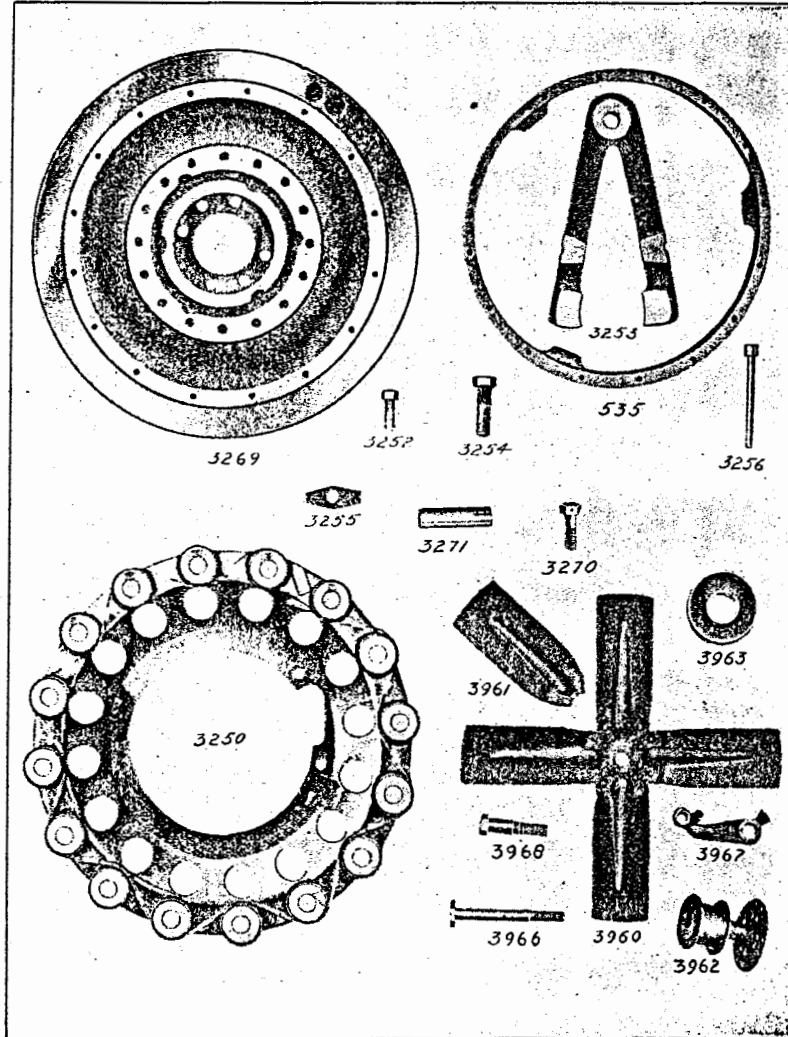


Plate 10—Fly Wheel, Magneto and Fan Parts

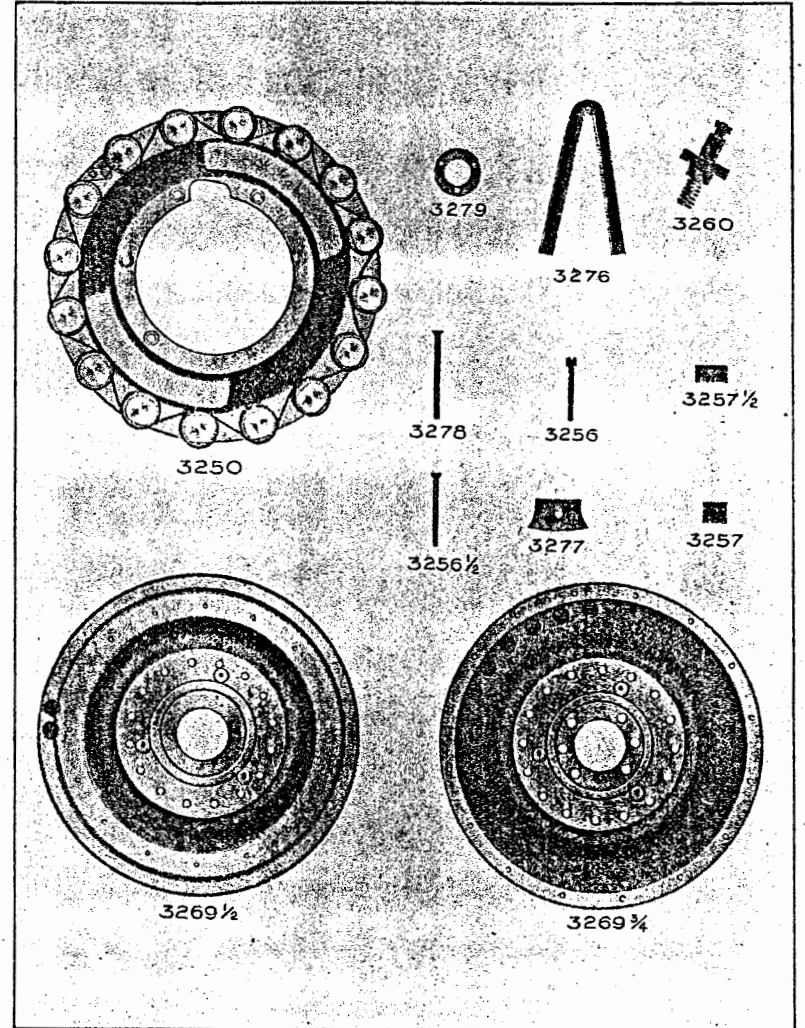
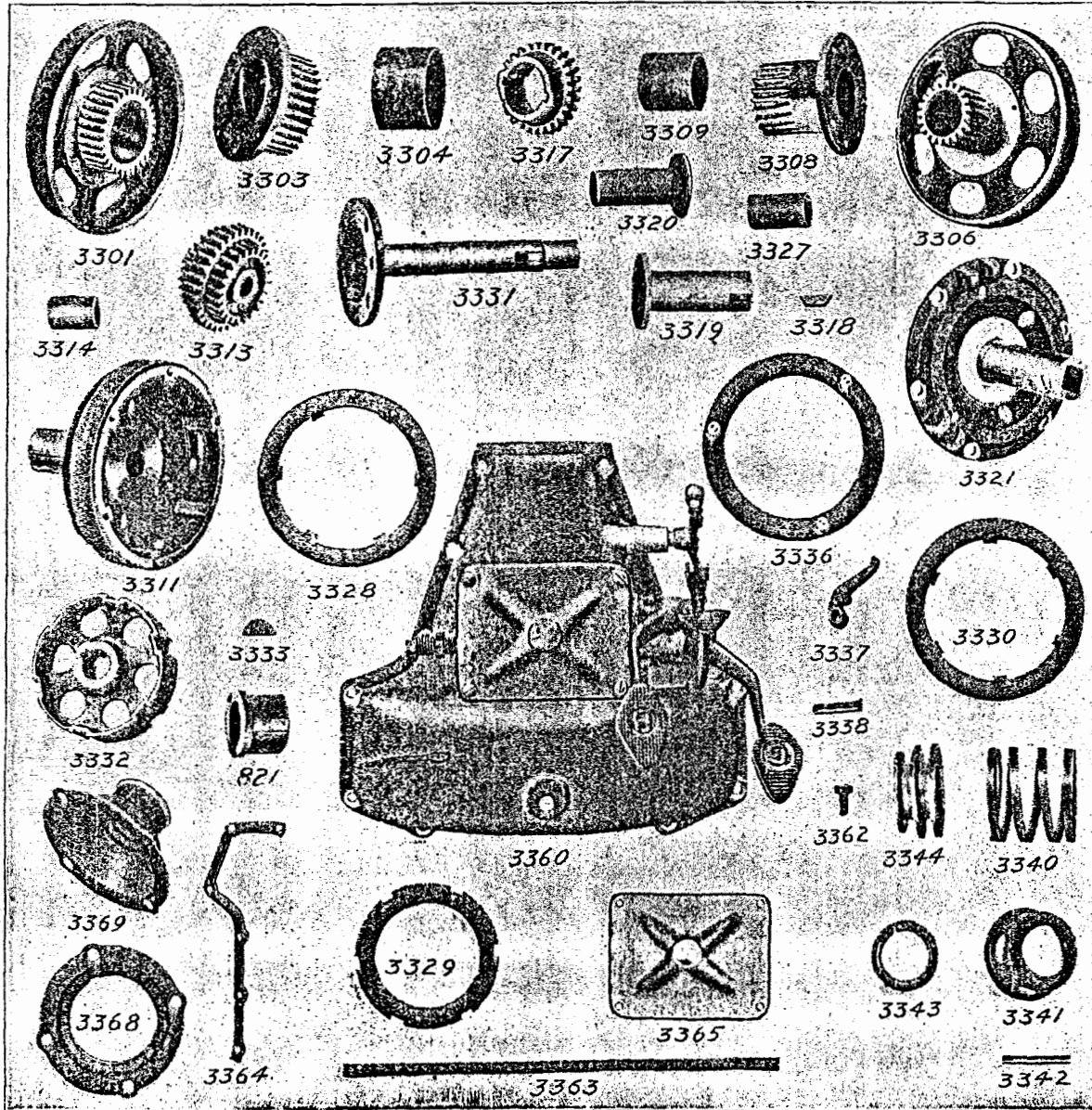


Plate 10-A Magneto Parts.



Magneto

Order by these Nos.	Description	Factory No.	Price.	Code Word.
3250 1/2	Magneto coil assembly (used in connection with 9/16" magnets)	591B	12 00	Tubissoir
3250 1/4	Magneto coil assembly (used in connection with 5/8" magnets)	591C	12 00	Tubissmar
3252	Magnet coil support screw to crank case	486	05	Tubisse.
3254	Magnet bolt (1-3/16" long)	537	05	Tubista
3255	Magnet washer	540	05	Tubistels
3256	Magnet washer screw (1 3/4" long)	541A	05	Tubitaped
3256 1/4	Magnet washer screw (2" long)	541B	05	Tubitaped
3257	Magnet brass supports (length 3/4")	535B	15	Tubitaro
3257 1/2	Magnet brass supports (29/32" long)	535C	15	Tubitaro
3258	Magnet clamp screw wire (44" long)	568	05	Tubitates
3259	Magnet clamp screw wire (30" long)	569	05	Tubitate
3260	Magneto contact assembly (on trans. cover)	1545	50	Tubjacmus
3261	Magneto contact thumb nut	1508	10	Tubjccent
3262	Magneto contact spring	1509	05	Tubjected
3263	Magneto contact washer (brass)	1510	05	Tubjection
3264	Magneto contact tube with fibre	1516	20	Tubjectif
3266	Magneto insulating fibre washer screw	1505	03	Tubjewel
3269	Fly wheel (style used on cars 1 to 17500)	701	7 00	Tubjubago
3269 1/2	Fly wheel (style used on cars 17500 to 20500)	701A	7 00	Tubjubader
3269 3/4	Fly wheel (style used on cars above 20500)	701B	7 00	Tubjubacon
3270	Fly wheel cap screw	721	10	Tubjugdor
3271	Fly wheel dowel pin	722	10	Tubjugate
3272	Magneto coil support shim	584	10	Tubjurzig
3273	Magnet bronze support (used on cars below 2500)	535	3 00	Tubitaron
3275	Magnet (thickness at face 9/16")		75	Tubissimere
3276	Magnet (thickness at face 5/8" used on cars above 20500)		50	Tubissimine
3277	Magnet clamp	623	05	Tubissiman
3278	Magnet clamp screw	625	05	Tubissimos
3279	Magneto insulating washer	563	04	Tubissimack

Transmission

3300	Transmission assembly with fly wheel	744B	70 00	Tubjugmos
3301	Trans. Reverse plate assembly	747	6 50	Tubjugorm
3302	Trans. reverse plate	702	2 50	Tubjuncto
3303	Trans. reverse gear (30 teeth)	703	2 75	Tubjunk
3304	Trans. reverse gear bushing	705	1 00	Tubjurm
3305	Trans. reverse plate rivet	708	03	Tublaba
3306	Trans. slow speed plate assembly	748	6 75	Tublavana
3307	Trans. slow speed plate	706	2 50	Tublabend
3308	Trans. slow speed gear (21 teeth)	707	3 00	Tublabia
3309	Trans. slow speed gear bushing	745	1 00	Tublabo
3310	Trans. slow speed plate rivet	708	03	Tublaba
3311	Trans. brake drum assembly	750	10 00	Tublbold
3312	Trans. brake drum only	709	5 00	Tublbone
3313	Trans. triple gear assembly	751B	6 00	Tublabout
3314	Trans. triple gear bushing	716A	50	Tublbrat
3314 1/2	Trans. triple gear flanged bushing	716B	50	Tublbriv
3315	Trans. triple gear shaft	715	50	Tublbriv
3318	Trans. triple gear riveting pin	720	05	Tublacens

Plate 11—Transmission Parts

Transmission—Continued

Order by these Nos.	Description	Factory No.	Price.	Code Word.
3317	Trans. driven gear (27 teeth) . . .	713	2 00	Tublacrim
3318	Trans. driven gear key	714	10	Tublapsar
3319	Trans. driven gear sleeve (on brake drum)	710	4 00	Tublapsl
3320	Trans. driven gear sleeve bushing	754	60	Tublapdodo
3321	Trans. driving plate assembly (including clutch fingers)	749	8 00	Tublaquad
3323	Trans. driving plate screw	731	10	Tublarm
3324	Trans. driving plate key	734	10	Tublatart
3325	Trans. driving plate rivet	736	03	Tublatine
3326	Trans. driving plate hub	743	3 00	Tublation
3327	Trans. driving plate bushing	724	50	Tublatoro
3328	Trans. thrust plate (13 small) each	727	30	Tublatuss
3329	Trans. thrust plate (13 large) each	728	30	Tublavams
3330	Trans. distance plate	729	40	Tublavets
3331	Trans. gear shaft	723B	4 40	Tubleten
3332	Trans. clutch disc drum	725B	3 00	Tublectory
3333	Trans. clutch disc drum key	726B	10	Tubleder
3334	Trans. clutch disc drum set screw	752	05	Tublefty
3336	Trans. clutch push ring	704	2 00	Tublegero
3337	Trans. clutch finger	732B	50	Tublet
3337 1/2	Trans. clutch finger screw	756	05	
3337 3/4	Trans. clutch finger washer	759	01	
3338	Trans. clutch finger pin	735	10	Tublevaba
3340	Trans. clutch spring	737	50	Tublevad
3341	Trans. clutch spring support	738	50	Tublevaen
3342	Trans. clutch spring thrust ring pin	739	10	Tubleveto
3343	Trans. clutch spring thrust ring	740	1 20	Tublevo
3344	Trans. clutch shift	733	2 00	Tublicam

Transmission Cover

3360	Trans. cover complete with pedal assembly	1563	18 00	Tublicory
3361	Trans. cover only	826C	9 00	Tublicutt
3362	Trans. cover bolt (1-1/32")	825B	05	Tublicury
3363	Trans. cover felt (2 pcs.)	872	10	Tublicyrx
3364	Trans. cover gasket (2 pcs.)	885	15	Tublderty
3365	Trans. cover door	1546C	75	Tubidunx
3366	Trans. cover door gasket	1547B	10	Tubliefon
3367	Trans. cover door screw	1564	05	Tubliegort
3368	Universal ball cap (rear)	818	75	Tublifort
3369	Universal ball cap (front)	819B	2 50	Tublifufer
3371	Universal ball cap bolt (13/16")	822B	05	Tubligolly
3372	Universal jt. ball cap bolt (1 1/8")	1538	05	Tublihogit
3373	Universal ball cap bolt nut	828	03	Tublihurty
3374	Trans. cover bolt (1-7/32")	1570	05	Tublits
3375	Trans. cover screw (1 1/4")	1567	05	Tublino
3376	Trans. cover with sloping door	826D	9 00	Tublitt
3377	Trans. cover gasket (2 pcs.)	835B	15	Tublito
3378	Trans. cover sloping door	1546D	80	Tublites
3379	Trans. cover sloping door gasket	1547C	10	Tubler

(Order parts below for Cars numbered below 2500).

723	Trans. shaft		4 40	Tublease
725	Trans. disc drum		3 00	Tublebe
726	Trans. disc drum key		10	Tublactar
716	Triple gear bushing		50	Tublabratt
712	Driven gear sleeve bushing (2) each		50	Tublaposits

Transmission Control—Three Pedal Type

3400	Trans. clutch release ring (bronze)	741	1 50	Tublilmitte
3401	Clutch lever	806B	30	Tublilmixer
3402	Clutch lever shaft (9 7/8" long)	833B	25	Tublilmotz
3403	Clutch lever screw	1541	10	Tublilotery

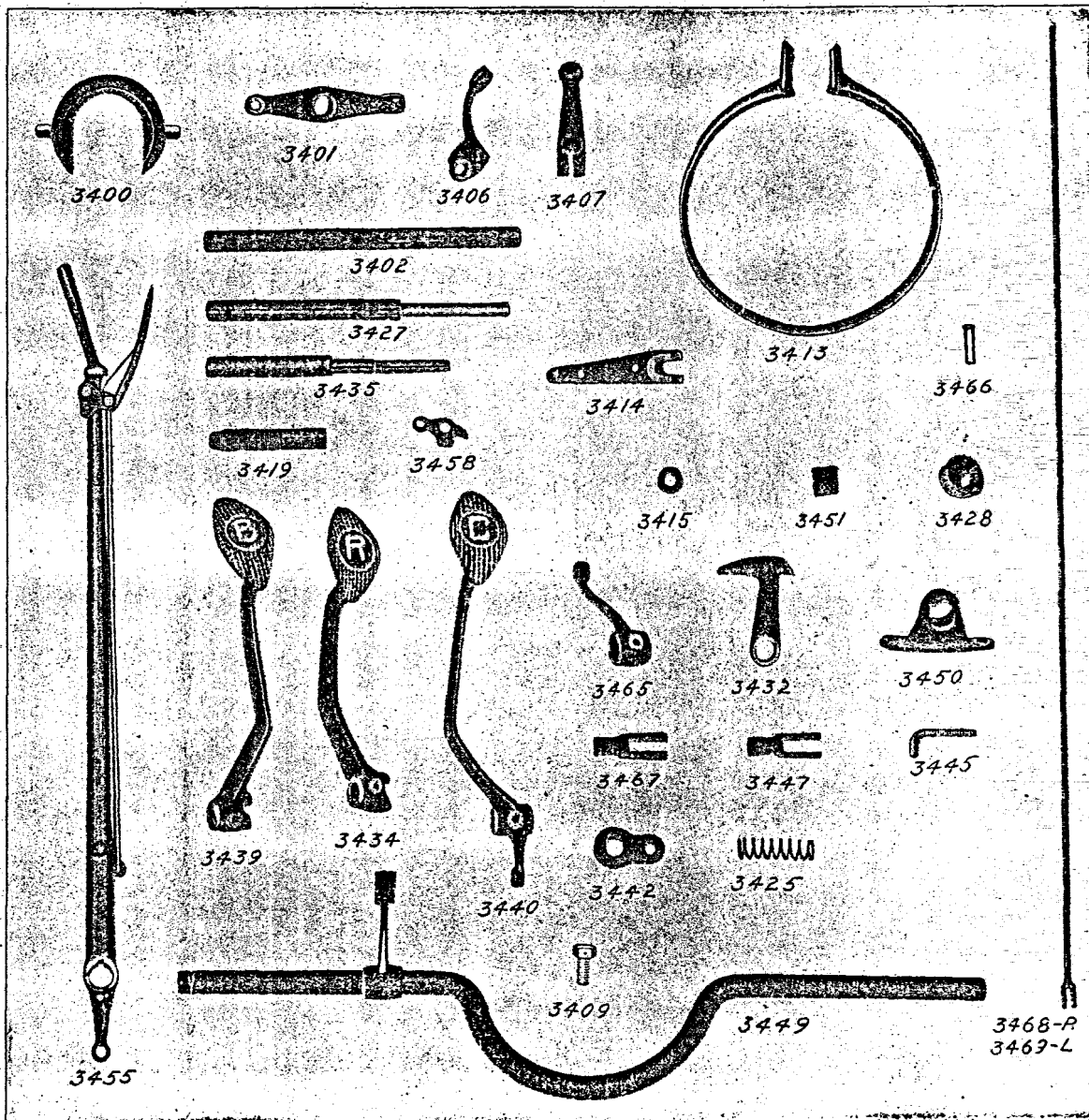


Plate 12—Control Parts

Transmission Control—Three Pedal Type

Order by these Nos.	Description	Factory No.	Price.	Code Word.
3404	Clutch lever screw nut	1542	05	Tubloyal
3405	Clutch lever pin	1554	03	Tublozerno
3406	Clutch release fork—right	834	50	Tublucana
3407	Clutch release fork—left	894	50	Tublucid
3408	Clutch release fork key	836	05	Tublucifus
3409	Clutch release fork clamp screw	835	05	Tubluebat
3410	Clutch release fork clamp screw wire	837	02	Tublueero
3411	Clutch and reverse lever clevis pin	857	02	Tublumis
3413	Trans. bands (3) each	838B	1 20	Tublunase
3414	Trans. band ear	839B	20	Tubluteos
3415	Trans. band washer	840	02	Tubluxias
3416	Trans. band raybestos lining	1555	50	Tublyre
3419	Trans. band adjusting screw	1533	15	Tubmacon
3420	Trans. band adjusting screw nut (3/4" hole)	1532	05	Tubmagical
3421	Trans. band rivet (3/16" x 7/16") per doz.	842	05	Tubmarnas
3422	Trans. band rivet (3/16" x 3/8") per doz.	843	05	Tubmedial
3423	Trans. band rivet (2/32" x 1/2") per doz.	844	05	Tubmedios
3424	Trans. band rivet (3/32" x 7/32") per doz.	845	05	Tubmerge
3425	Trans. band spring	841B	05	Tubmergin
3428	Trans. band adjusting nut (7/16 x 20 th'd)	851	05	Tubmergus
3427	Slow speed shaft	848B	30	Tubmerhuf
3428	Slow speed notch	829B	50	Tubmicky
3429	Slow speed notch pin	1560	03	Tubmidway
3430	Slow speed shaft washer	1559	05	
3432	Speed lever	853B	40	Tubmiggot
3433	Speed lever clevis pin	898	05	Tubmiss
3434	Reverse pedal	853B	1 25	Tubmitoy
3435	Brake and reverse pedal shafts (2) each	849B	20	Tubmixa
3436	Brake and reverse pedal support (2) each	1530	30	Tubmiyave
3437	Brake and reverse support bolts (2) each	1534	10	Tubmotixn
3438	Brake and reverse support bolt nuts (2) each	1535	05	Tubmoyben
3439	Brake pedal	852B	1 25	Tubmuddy
3440	High and slow speed pedal (1910)	854B	1 25	Tubmufatt
3441	Pedal pins (3) each	1553	05	Tubmugerxn
3442	High and slow speed pedal support	1531	30	Tubmumavy
3443	High and slow speed pedal support bolt	1538	05	Tubmuney
3444	High and slow speed pedal support bolt nut	1537	05	Tubmvolit
3445	Slow speed connection	1540	15	Tubmurton
3446	Slow speed connection lock nut	850	02	Tubmyrgus
3447	Slow speed connection clevis	802	25	Tuboload
3448	Controller quadrant	309B	60	Tuboraxl
3449	Controller shaft with speed lever assembled	867C	1 00	Tubozalt
3450	Controller shaft bracket	311	25	Tubmurmer
3451	Controller shaft bracket felt	314	10	Tubmused
3452	Controller shaft bracket bolt	315	05	Tubmutedo
3453	Controller shaft bracket nut	316	03	Tubmutque
3456	Hand brake lever assembly (1910)	1550	2 50	Tubnascel

Transmission Control—Three Pedal Type

Order by these Nos.	Description	Factory No.	Price.	Code Word.
3456	Hand brake lever pin	866	02	Tubnatabo
3457	Hand brake lever key	874	05	Tubnats
3458	Hand brake lever pawl	875	20	Tubnaviga
3459	Hand brake lever pawl pin	876	05	Tubnavimo
3460	Hand brake lever pawl rod (1910)	877	15	Tubnectes
3462	Hand brake lever pawl lift (includes spring)	879	40	Tubnectum
3465	Hub brake lever on controller shaft	864	40	Tubnegart
3466	Hub brake lever pin	865	02	Tubnerons
3467	Hub brake lever clevis	47	25	Tubnerra
3468	Hub brake pull rod—right	891B	45	Tubnervas
3469	Hub brake pull rod—left	1513B	45	Tubnervo
3470	Hub brake pull rod support—right	1387C	15	Tubnerzor
3471	Hub brake pull rod support—left	1398C	15	Tubnethin
3472	Hub brake pull rod support bolt (1" long)	1399B	05	Tubnexis
3473	Hub brake pull rod support bolt nut	1900	02	Tubneyzal
3474	Hand brake lever assembly (runabout)	1590	2 50	
3475	Hand brake lever pawl rod (Runabout)	1593	15	
3476	High and slow speed pedal (runabout)	1591	1 25	
3477	Brake pedal (Runabout)	1592	1 25	

Steering Gear

3500	Steering gear assembly 1909-10 type (60" long)	900	20 00	Tubneuter
3501	Steering gear rim (13" O. D.)	901	1 60	Tubneuro
3502	Steering gear rim screw	919	05	Tubnexed
3503	Steering gear spider	902	1 60	Tuborno
3504	Steering gear cover	903	1 00	Tubostend
3505	Steering gear cover screw	910	05	Tuboval
3506	Steering gear cover bushing	914	25	Tubovtrae
3507	Steering gear internal gear case	904	1 50	Tuboxice
3508	Steering gear case bushing	905	1 25	Tubpectin
3509	Steering gear quadrant	906	1 20	Tubpenne
3510	Steering gear quadrant pin	907	05	Tubperfor
3511	Steering gear wheel nut	913	20	Tubjetrol
3512	Steering gear tubing assembly (includes gear case, also lead and throttle rods) (27" long)	949	8 00	Tubpquant
3513	Steering gear tubing flange screw	927	10	Tubplinth
3514	Steering gear tubing flange screw nut	926	10	Tubplinos
3515	Steering gear tubing flange screw washer	925	05	Tublisse
3516	Steering gear post (51" long)	915	2 50	Tubpollar
3517	Steering gear pinions (3) each	916	50	Tubporan
3518	Steering gear pinion pin (3/4" x 1-1/16")	917	05	Tubprefer
3519	Steering gear drive pinion	911	1 00	Tubpprior
3520	Steering gear driving pinion key	909	05	Tubpuarto
3521	Steering gear pinion shaft bushing	912	30	Tubradend
3522	Steering gear post castle nut	951	05	Tubradle
3523	Throttle rod	933	50	Tubrados
3524	Lead rod	934	50	Tubralem
3525	Lead and throttle handle (rubber)	918	25	Tubrameal
3526	Lead throttle rod spring	935	10	Tubramoso
3527	Lead & throttle rod collar	936	10	Tubrasos

Steering Gear—Continued

Order by these Nos.	Description	Factory No.	Price.	Code Word.
3529	Lead & throttle rod collar pin ...	937	05	Tubrasuro
3530	Lead rod lever	940	30	Tubraucid
3531	Throttle rod lever	947	30	Tubraucos
3532	Throttle rod guide	938	40	Tubraudad
3533	Throttle rod and lead lever pin ..	948	02	Tubray
3534	Commutator pull rod (14" long) ..	1325B	25	Tubrayater
3535	Carburetor pull rod (13-13/16" long) ..	1329	20	Tubrayn
3530	Lead lever ball and socket joint ..	1326	30	Tubrayo
3537	Lead lever ball and socket joint nut ..	1327	03	Tubrayors
3538	Carburetor pull rod adjustment ..	1904	15	Tubregang
3539	Steering post bracket with bushing ..	932	2 50	Tubregano
3540	Steering post bracket bolt (2 1/4" long) ..	939	20	Tubregion
3541	Steering post bracket bolt (3/4" long) ..	940	10	Tubridebe
3542	Steering post bracket bolt nut ..	941	05	Tubrident
3544	Steering post bracket felt washer ..	943	10	Tubrigor
3545	Steering post bracket bushing (bronze) ..	944	1 00	Tubrigos
3546	Steering post bracket block ..	945	10	Tubrigum
3547	Steering gear ball arm ..	929B	1 20	Tubrihort
3548	Steering gear ball arm key ..	930	10	Tubrusion

Steering Gear—1911 Touring Car

3550	Steering gear assembly (56" long) ..	900B	20 00
3551	Steering gear rim (15" O. D.) ..	901B	1 60
3552	Steering gear spider ..	902B	1 60
3553	Steering gear post (53" long) ..	915B	2 50
3554	Steering gear tubing assembly ..	949B	8 00
3555	Steering gear tubing flange screw (19/16") ..	954	10
3556	Steering gear tubing flange screw (15/16") ..	956	10
3559	Steering gear case bushing ..	905B	1 25
3560	Throttle lever rod ..	933B	50
3561	Lead lever rod ..	934B	50
3562	Steering post bracket with bushing ..	932B	2 50
3563	Steering post bracket grease cup (For other parts of this assembly see Nos. 3500 to 3548) ..	955	25

Steering Gear—1911 Runabout

3575	Steering gear assembly (61" long) ..	979	20 00
3576	Steering gear tubing assembly (34" long) ..	963	8 00
3577	Steering gear post (59" long) ..	959	2 50
3578	Throttle lever rod ..	957	50
3579	Lead lever rod ..	958	50
3580	Steering post bracket with bushing ..	953	2 50

(Parts 3551-3552-3555-3556-3563 apply to this assembly:—Other parts listed under Nos. 3500 to 3548.)

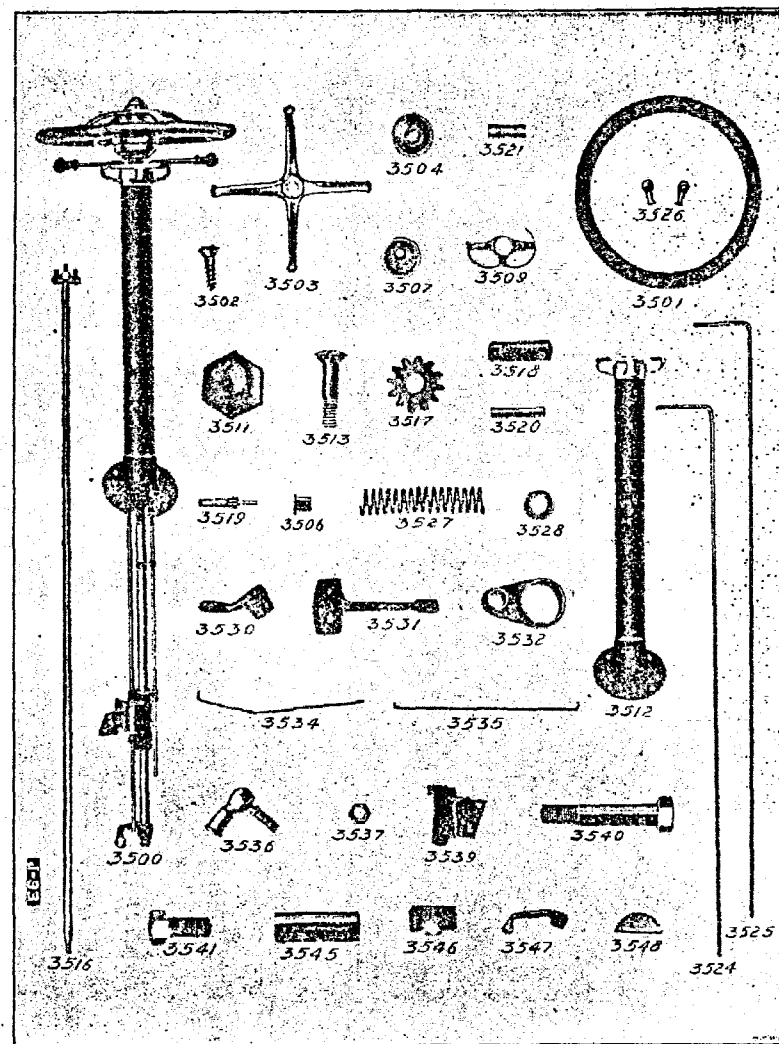


Plate 13—Steering Gear Parts

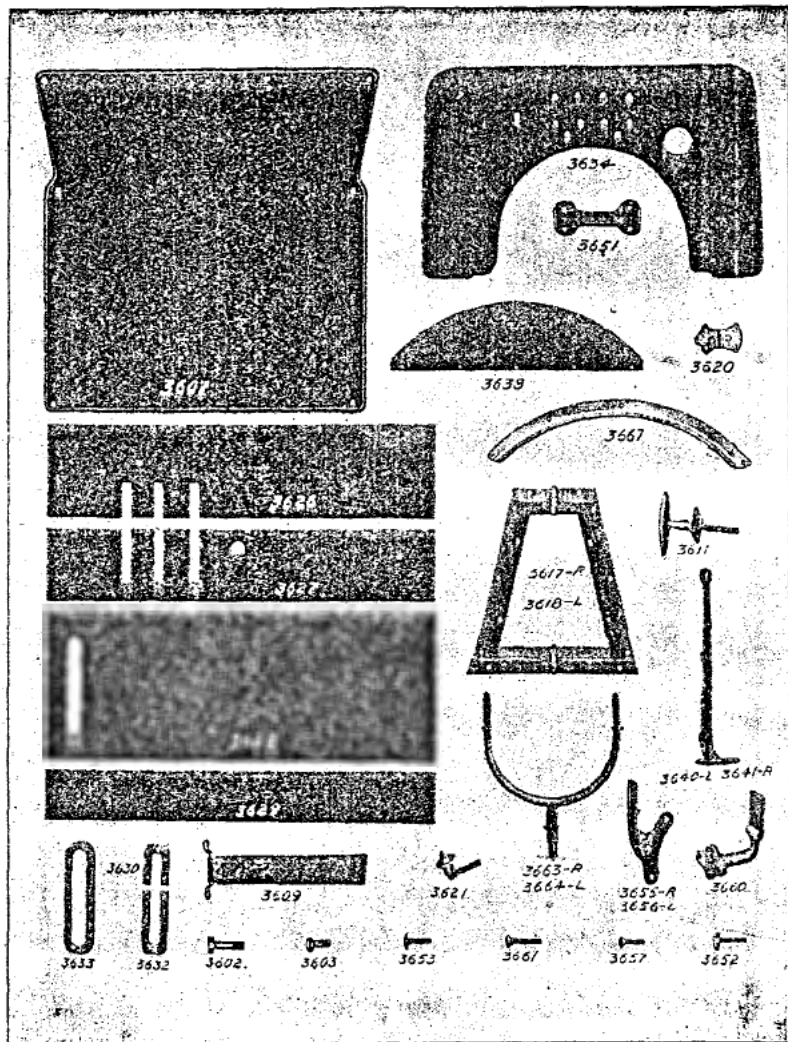


Plate 14—Floor Board and Dash with Parts

Body Parts—1909-10 Touring Car

Order by these Nos.	Description	No.	Price.	Code Word.
3601	Body bracket on body (front end)	1002	10	Tubrogaor
3601½	Body bracket on body (centre and rear)		10	Tubrob
3602	Body bracket connecting bolt (1½" long)	1304	05	Tubroanus
3603	Body bracket connecting bolt (25/32" long)	1305	05	Tubrobnus
3605	Body bracket connecting bolt nut (square)	1307	05	Tubrojne
3606	Body bracket bolt nut (hexagon)	1001	03	Tubrole
3607	Tonneau carpet for touring car	1606	2 50	Tubronnd
3607¼	Tonneau carpet for Town car		2 50	Tubronde
3607½	Carpet for coupe		2 50	Tubrondel
3608	Tonneau carpet fastener screw	1602	05	Tubrolcel
3609	Tonneau door strap	1605	35	Tubroste
3610	Tonneau door strap ellip screws	1600	05	Tubrubect
3611	Tonneau door handle	1443	60	Tubrufarm
3612	Tonneau door handle screw	1479	05	Tubrumax
3613	Tonneau door lock—left	1442B	1 50	Tubrumabot
3614	Tonneau door lock—right	1444B	1 50	Tubrunult
3615	Tonneau door lock striker plate (left)	1445B	30	Tubruntia
3616	Tonneau door lock striker plate (right)	1446B	30	Tubrupter
3617	Tonneau door hinge assembly—right	1632	1 00	Tubrastic
3618	Tonneau door hinge assembly—left	1633	1 00	Tubratile
3619	Tonneau door hinge pin	1012	10	Tubruto
3620	Tonneau heel board hinge	1019	15	Tubsaline
3621	Tonneau heel board latch	1020	35	Tubsalsam
3622	Tonneau heel board hinge screw	1471	05	Tubsalsoc
3623	Tonneau heel board latch screw	1067	05	Tubsalsud
3624	Front floor rubber matting	1616	3 00	Tubsalt
3626	Floor board (first)	1096B	35	Hubsanaet
3627	Floor board (second)	1402B	40	Tubsanerz
3628	Floor board (third)	1404B	30	Tubsanorx
3629	Floor board (fourth)	1403B	35	Tubsatrat
3630	Floor board forward plate for pedals	1400B	50	Tubsayert
3631	Floor board plate screw	1407	05	Tubscrime
3632	Floor board rear plate for pedals	1095B	40	Tubscutid
3633	Floor board plate for side lever	1094B	35	Tubsduty
3634	Dash	1091B	6 00	Tubsdaylen
3635	Dash brass moulding	1063	1 50	Tubsecutos
3636	Dash brass moulding screw	1064	03	Tubsequor
3637	Dash moulding center screw (¾" long)	1023	05	Tubsequi
3638	Dash shield	1097B	20	Tubseqvox
3639	Dash shield screw	1405	02	Tubserat
3640	Dash bracket (left)	1017	50	Tubserite
3641	Dash bracket (right)	1018	50	Tubservcd
3642	Dash bracket bolt (on frame)	1028	05	Tubservin
3643	Dash bracket bolt nut	1029	05	Tubsesssa
3645	Dash bracket top bolt	1039	05	Tubsessle
3646	Dash bracket lower bolt	1032	05	Tubsesssix
3647	Dash bracket top bolt washer	1033	02	Tubsetssor
3648	Dash bracket lower bolt washer	1034	02	Tubsetace
3649	Dash bracket top bolt nut	1035	03	Tubsetssue
3650	Dash bracket lower bolt nut	1036	03	Tubsetccas
3651	Dash to body bracket	1489	15	Tubsidor
3652	Dash to body bracket bolt (on body)	1490	05	Tubsidunt

Body Parts—1909-10 Touring Car—Continued

Order by these Nos.	Description	No. Factory	Price.	Code Word.
3653	Dash to body bracket bolt (on dash)	1491	05	Tubsifan
		1492	03	Tubsifer
3654	Dash to body bracket bolt nut			
3655	Oil lamp bracket—right (touring car)	1497	40	Tubsiform
3656	Oil lamp bracket—left (touring car)	1498	40	Tubsign
3657	Oil lamp bracket brass screw	1503	05	Tubsignal
3658	Oil lamp bracket screw nut	1608	05	Tubsigned
3659	Oil lamp bracket screw washer	1627	03	Tubsimile
3660	Tail lamp bracket (touring car)	1613	25	Tubsimone
3661	Tail lamp bracket bolt	1614	05	Tubsimor
3662	Tail lamp bracket bolt nut	1615	05	Tubsimimo
3663	Gas lamp bracket—right	1301	1 00	Tubspic
3664	Gas lamp bracket—left	1348	1 00	Tubspunt
3665	Gas lamp bracket nut	1302	05	Tubstist
3667	Front seat cushion for touring car	1626	12 00	Tubstistis
3670	Rear seat cushion for touring car	1627	12 00	Tubstistor
3667 1/4	Tourabout front seat cushion—right		6 00	
3667 1/2	Tourabout front seat cushion—left		6 00	
3670 1/4	Tourabout rear seat cushion—right		6 00	
3670 1/2	Tourabout rear seat cushion—left		6 00	
3671	Oil lamp bracket—right (town car)		1 00	Tubstisten
3672	Oil lamp bracket—left (town car)		1 00	Tubstisdo
3673	Oil lamp bracket—right (coupe)	2200	1 00	Tubtsel
3674	Oil lamp bracket—left (coupe)	2201	1 00	Tubstismen
3675	Tail lamp bracket (coupe)		50	Tubstiscog
3676	Cocoo mat (31 x 32)		3 00	

Springs

3800	Front spring (specify color)	332	6 00	Tubststurn
3801	First leaf (main leaf)	354	1 25	Tubsold
3802	Second leaf	355	1 10	Tubsoil
3803	Third leaf	356	1 00	Tubsolled
3804	Fourth leaf	357	90	Tubsolad
3805	Fifth leaf	358	75	Tubsolano
3806	Sixth leaf	359	60	Tubsolary
3807	Seventh leaf	360	40	Tubsolitus
3808	Front spring clip	325B	25	Tubsolve
3809	Front spring clip nut	327	05	Tubsolvin
3811	Front spring tie bolt	1362	05	Tubsonaba
3812	Front spring tie bolt nut	1363	02	Tubsortit
3813	Front spring hanger (wide flange)	246	50	Tubsparg
3814	Front spring hanger (narrow flange)	229	50	Tubstrunt
3815	Front and rear spring hanger nut	220	02	Tubsume
3817	Front and rear spring hanger oiler	267	15	Tubtender
3818	Front spring perch—right	222	1 00	Tubtenses
3819	Front spring perch—left	222 1/2	1 00	Tubterago
3820	Front spring perch bushing	230	20	Tubtereba
3821	Front spring perch nut	242	05	Tubterfuc
3823	Front spring leather	262	10	Tubtevac
3824	Rear spring	333	14 00	Tubterit
3825	First leaf (main leaf)	361	2 60	Tubtera
3826	Second leaf	362	2 25	Tubtlendo
3827	Third leaf	363	2 00	Tubttlely

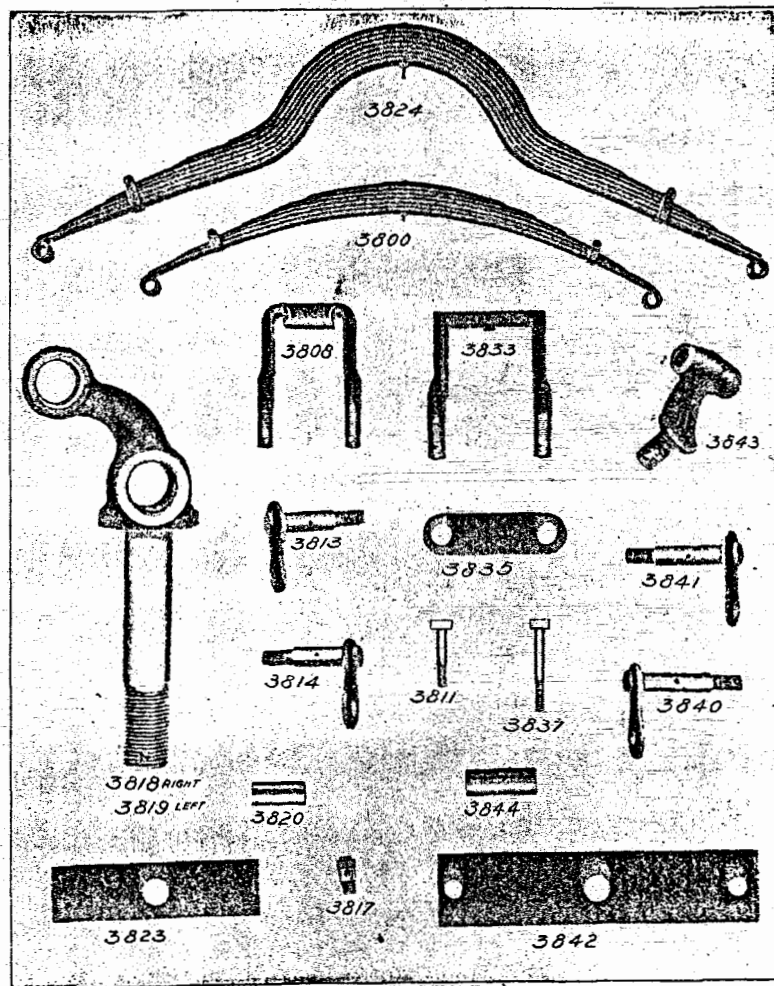


Plate 15—Springs and Parts

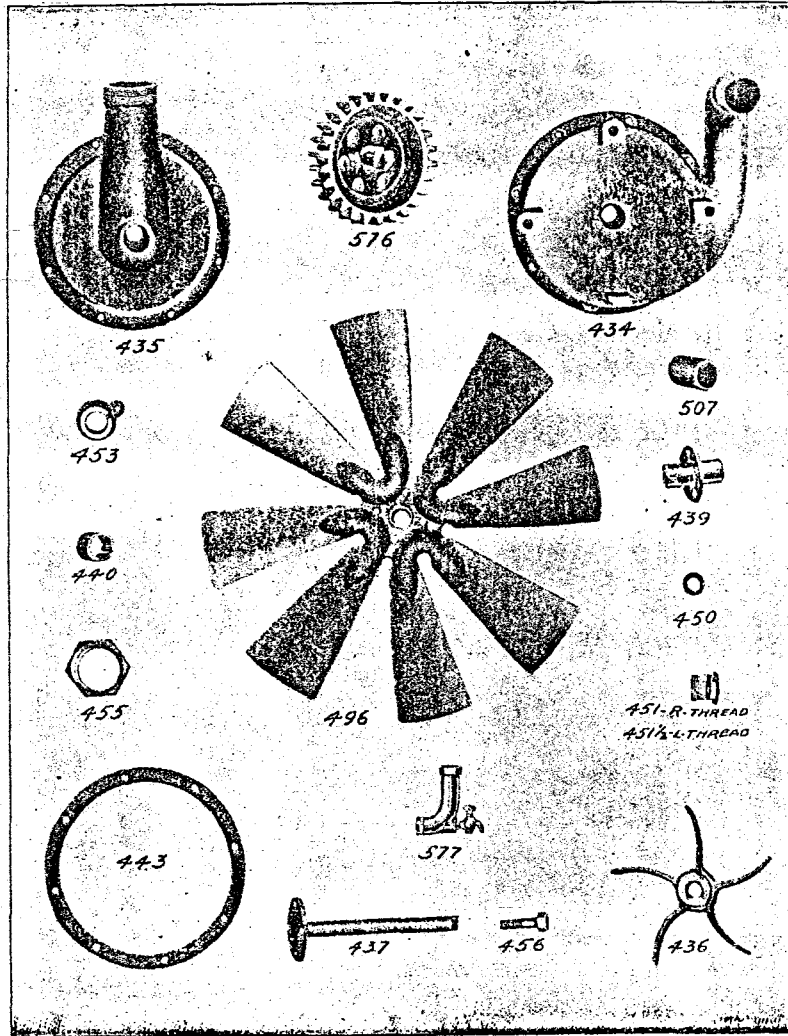


Plate 16—Parts for Pump Circulation Motor

Springs—Continued

Order by these Nos.	Description	No. Factory	Price.	Code Word.
3828	Fourth leaf	364	1 75	Tubtilleza
3829	Fifth leaf	365	1 60	Tubtiliba
3830	Sixth leaf	366	1 50	Tubtilise
3831	Seventh leaf	367	1 30	Tubtility
3832	Eighth leaf	368	1 10	Tubtimear
3833	Rear spring clip	326	25	Tubtinies
3834	Rear spring clip nut	328	05	Tubtituba
3835	Rear spring clip bar	329	10	Tubtive
3837	Rear spring tie bolt	1352	05	Tubtly
3838	Rear spring tie bolt nut	1353	02	Tubtonic
3840	Rear spring hanger (narrow flange)	91	50	Tubtorse
3841	Rear spring hanger (wide flange)	91½	50	Tubtraca
3842	Rear spring leather pad	94	15	Tubtrack
3843	Rear spring perch	41	60	Tubtracto
3844	Rear spring perch bushing	172	20	Tubtraho
3845	Rear spring perch nut	174	05	Tubtrahir
3846	Rear spring clip (Runabout)	399	25	

Rear Spring 60" Tread

3850	Rear spring	1704	14 00	
3851	Rear spring clip	1737	25	
3852	Rear spring tie bolt	1738	10	
3853	First leaf (main leaf)	1739	2 60	
3854	Second leaf	1740	2 25	
3855	Third leaf	1741	2 00	
3856	Fourth leaf	1742	1 75	
3857	Fifth leaf	1743	1 60	
3858	Sixth leaf	1744	1 50	
3859	Seventh leaf	1745	1 30	
3860	Eighth leaf	1746	1 10	

Pump

551	Pump assembly	9 00	Tubtrifid
434	Pump body	4 00	Tubtrillo
435	Pump Cover	2 00	Tubtrillem
443	Pump cover gasket	10	Tubtriste
452	Pump cover screw	05	Tubtripos
436	Pump fan	1 00	Tubtrude
437	Pump shaft	1 00	Tubturbin
454	Pump fan pin	01	Tubtuto
451	Pump packing nut (right hand)	25	Tubtutorm
451½	Pump packing nut (left thread)	25	Tubucclam
450	Pump thrust washer (steel)	10	Tubuculo
576	Pump drive gear and shaft	2 50	Tubucularia
438	Pump drive gear only	1 50	Tubule
439	Pump drive gear shaft only	1 00	Tubulines
440	Pump drive gear shaft bushing (rear)	25	Tubulipap
453	Pump drive gear shaft bushing (front)	25	Tubuliped
577	Pump inlet connection assembly	1 00	Tubumdon
556	Pump inlet connection pet cock	30	Tubunctis
455	Pump inlet nut	30	Tubungor
507	Pump inlet hose 1¼ inside x 3¼	30	Tubungual
555	Pump inlet hose clip	10	Tubungunt
458	Pump support screw	05	Tuburb
496	Radiator fan and shaft	2 00	Tuburbain
496½	Radiator fan only	1 00	Tuburpago
497	Radiator fan rivet	02	Tuburbana

Starting Crank

Order by these Nos.	Description	No.	Price.	Code Word.
3900	Starting crank only	515B	1 00	Tuburbqit
3901	Starting crank handle (rubber)	520	40	Tuburbio
3902	Starting crank handle bolt	521	20	Tuburend
3903	Starting crank sleeve (steel tubing)	523B	30	Tubutten
3905	Starting crank ratchet pin (1 1/2" long)	527B	05	Tubvonder
3908	Starting crank ratchet	528B	35	Tubvutigo
3907	Starting crank strap	1963	30	Tubvuzelt
3908	Starting crank spring (brass)		05	Tubvolt
519	Starting crank only		1 00	Tuburbial
522	Starting crank handle bolt nut		05	Tuburimus
523	Starting crank sleeve		50	Tuburran
524	Starting crank collar pin		02	Tubvadem
525	Starting crank collar		25	Tubvectab
526	Starting crank spring		10	Tubvelout
527	Starting crank ratchet pin		02	Tubven
528	Starting crank ratchet		35	Tubvencas

Radiator (Thermo-Syphon)

3925	Radiator-thermo-Syphon	1100C	28 00	Tubvectil
3926	Radiator cap	1103B	50	Tubvedon
3927	Radiator cap gasket (fibre)	1117	05	Tubvenga
3928	Radiator pad (leather)	1105	05	Tubvendia
3929	Radiator stud	1102	03	Tubveno.
3930	Radiator stud spring	1152	05	Tubveno!
3931	Radiator stud nut	1154	05	Tubvence
3931 1/2	Radiator stud washer	1161	05	Tubveld
3932	Radiator rod (20 1/2" long)	1111B	25	Tubvenscot
3933	Radiator rod washer	1112	03	Tubversod
3934	Radiator rod nut	1113	05	Tubverse
3935	Name plate	1114	40	Tubvert
3936	Name plate bolt	1115	05	Tubverter
3937	Name plate nut	1116	02	Tubvertid
3938	Name plate washer	1118	02	Tubvertra
3939	Outlet connection pipe (see motor plate)	1121	50	Tubveruly
3940	Outlet connection cock	594	25	Tubvester
3944	Outlet connection hose (1 1/2" inside x 2 1/4")	507B	30	Tubvexis
3945	Outlet connection hose clip	554	10	Tubveyix
3946	Radiator stay rod (22 3/4" long)	1167	25	

Radiator (Pump Circulation)

1100	Radiator (pump circulation)		28 00	Tubvendra
1111B	Radiator stay rod (state length)		25	Tubverif

Radiator Fan (Thermo-Syphon Motor)

3960	Fan & pulley assembly	619	2 00	Tubiah
3961	Fan blades, each	611	25	Tubvlabot
3962	Driven fan pulley (brass)	618	1 00	Tubvlacod
3963	Fan drive pulley	602	30	Tubvlacogi
3964	Fan belt	609	60	Tubvlacux
3965	Fan tension spring	610	05	Tubvladox
3966	Fan shaft	606	25	Tubvladunt
3967	Fan bracket	604	40	Tubvlafule
3968	Fan bracket bolt	605	15	Tubvlafyt
3970	Fan offer assembly	601	20	Tubviagin
3971	Fan offer body	598	10	Tubviagore
3972	Fan offer cap	616	10	Tubviahay
3973	Fan adjusting screw	645	10	
3974	Fan adjusting screw lock nut	646	05	

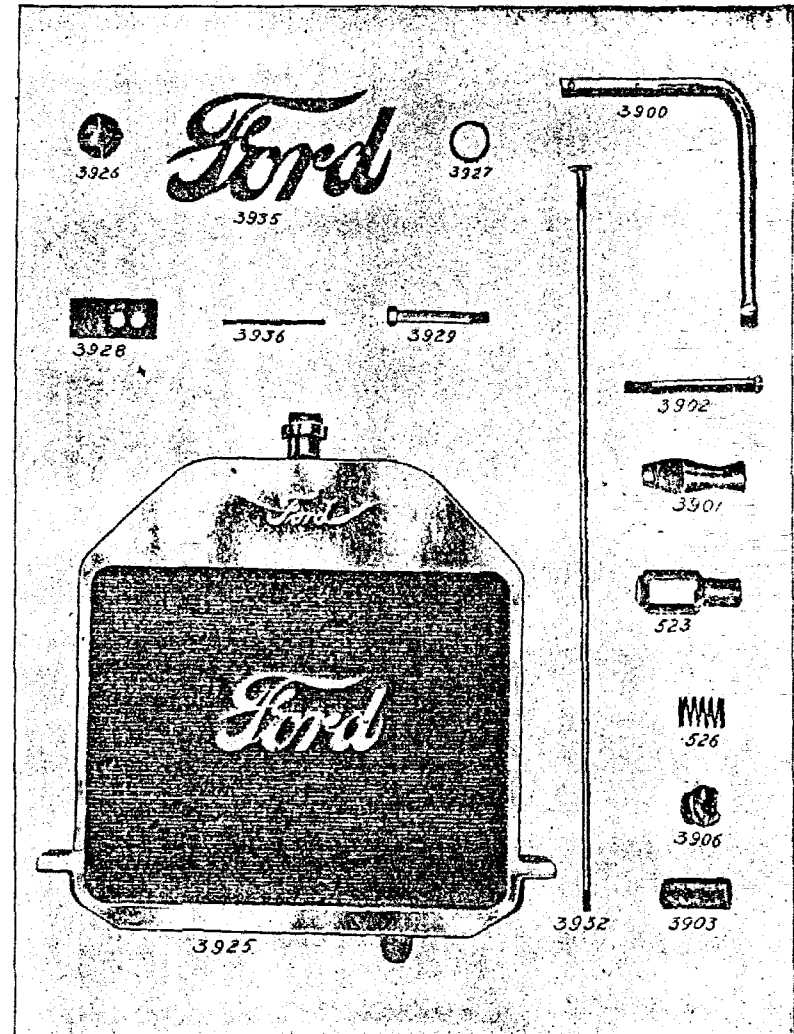


Plate 17—Radiator and Parts

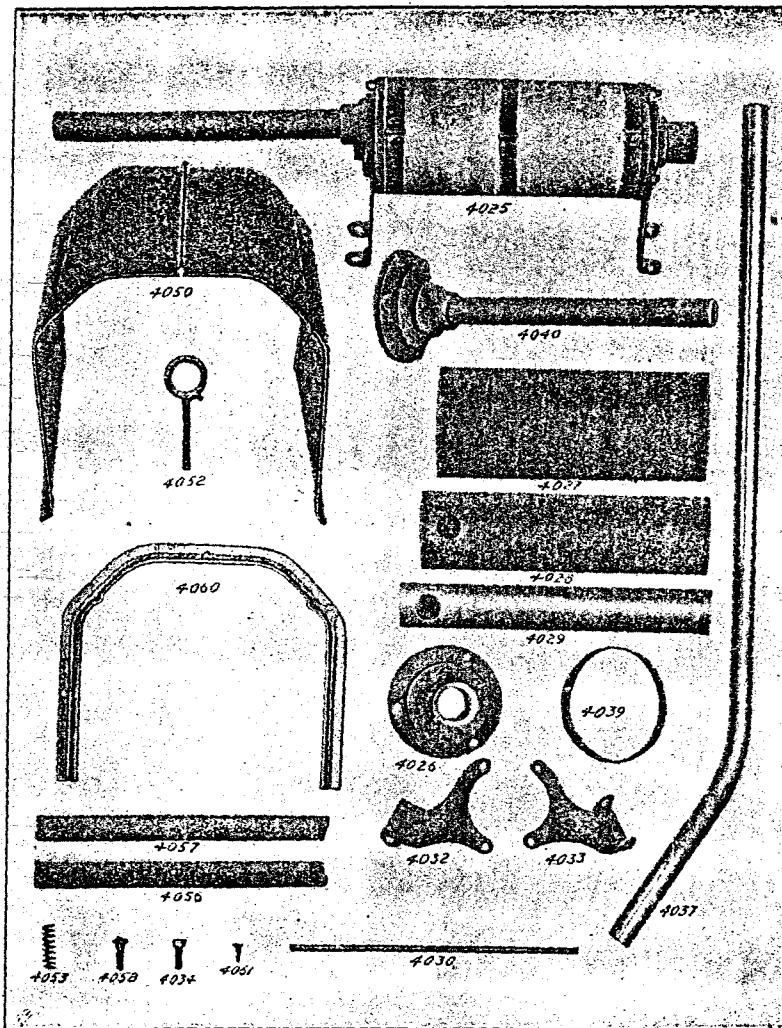


Plate 18—Hood, Muffler and Parts

Order by these Nos.	Description	Factory No.	Price.	Code Word.
Muffler				
4025	Muffler assembly	1200B	2 50	Tubvesper
4026	Muffler head-intake	1202B	60	Tubvienes
4027	Muffler shell (outer)	1203	30	Tubvinier
4028	Muffler shell (middle)	1204	25	Tubvinmes
4029	Muffler shell (inner)	1205	60	Tubvoade
4030	Muffler rod only	1206	10	Tubvocalt
4031	Muffler rod nut	1207	05	Tubvolaba
4032	Muffler bracket—exhaust	1217	30	Tubvolem
4033	Muffler bracket—intake	1218	30	Tubway
4034	Muffler bracket bolt	1210	05	Tubworker
4035	Muffler bracket bolt nut	1211	03	Tubyaga
4037	Long exhaust pipe	1214	1 50	Tubygare
4038	Muffler asbestos	1215	15	Tubyhoti
4039	Muffler asbestos bands (tin)	1216	10	Tubyhauz
4040	Rear muffler head with outlet pipe	1221	75	Tubvienta
Hood—Touring Car				
4050	Hood—22" long (specify color)	1300	6 50	Tubyugot
4051	Hood handle	1314	25	Tubyugur
4052	Hood clip	1310	10	Tubzuar
4053	Hood clip spring	1311	05	Tubzuril
4054	Hood clip washer	1312	02	Tubcaro
4056	Hood-board—left (22 3/4" long)	1339	40	Tubccantab
4057	Hood-board—right (22 3/4" long)	1340	40	Tuccendan
4058	Hood-board bolt	1308	05	Tuccedase
4059	Hood-board bolt nut	1309	02	Tuccedbt
4060	Hood support on dash	1334	1 00	Tuccedemo
4061	Hood support screw	1350	01	Tucceden
4062	Hood clasp (on radiator)	1109B	05	
Hood—Runabout				
4070	Hood—24" long (Specify color)	2313	6 50	Tuccedil
4071	Hood block—right (24 3/4" long)	2305	40	Tuccedot
4072	Hood block—left (24 3/4" long)	2306	40	Tuccedar
Carburetor (1910 Kingston)				
4100	Carburetor complete		9 00	
4101	Float		80	
4102	Float chamber		2 00	
4103	Gasoline valve		50	
4104	Gasoline valve operating lever		30	
4105	Gasoline valve operating lever shaft		10	
4106	Gasoline valve cap		30	
4107	Mixing chamber		2 00	
4108	Spray nozzle		30	
4109	Center chamber		1 00	
4110	Gasket for center member		20	
4111	Gasoline needle valve		50	
4112	Gasoline needle valve set screw		05	
4114	Throttle gate screw		05	
4115	Throttle gate lever		30	
4116	Throttle gate adjusting screw		05	
4117	Throttle gate set screw		05	
4118	Gasoline intake packing nut		15	
4119	Gasoline intake elbow		25	
4120	Primer assembly		40	
4121	Primer lever only		20	
4122	Bronze ball (for air regulation)		10	
4123	Retainer cup for balls		40	
4124	Constant air supply connection		1 00	
4125	Constant air supply connection lock nut		20	
4126	Carburetor adjusting rod head		15	
4127A	Carburetor adjusting rod bracket		30	

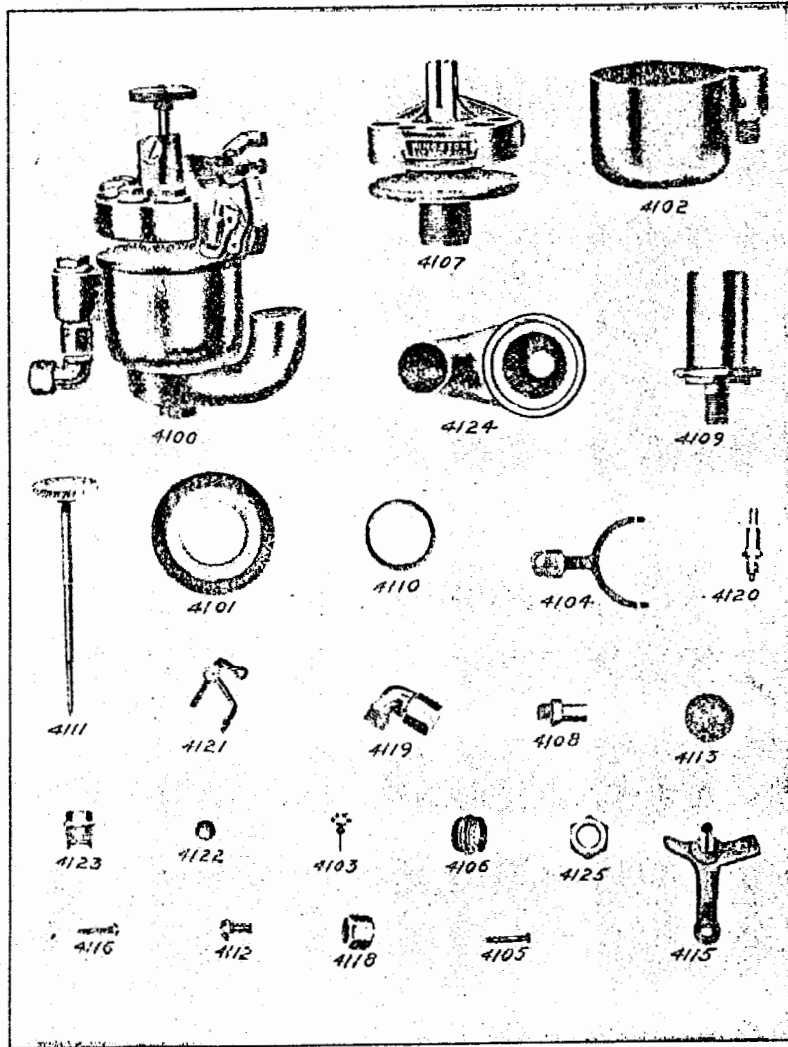


Plate 19—Kingston Carburetor and Parts

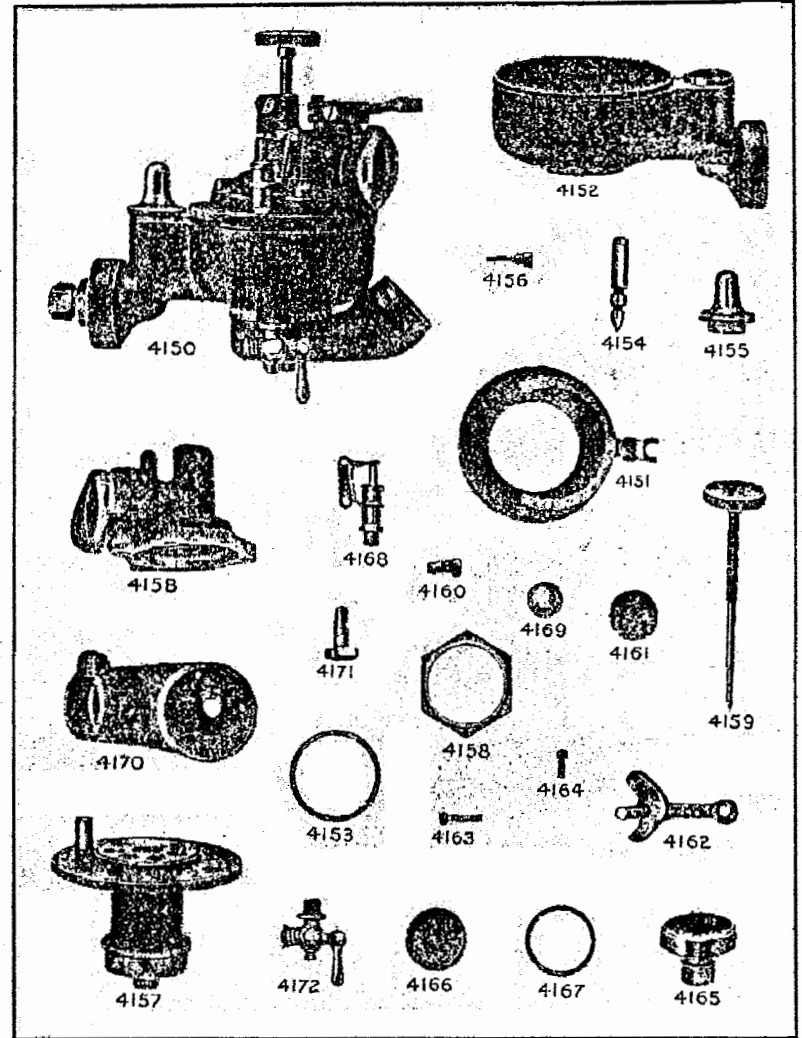


Plate 20—Holly Carburetor and Parts

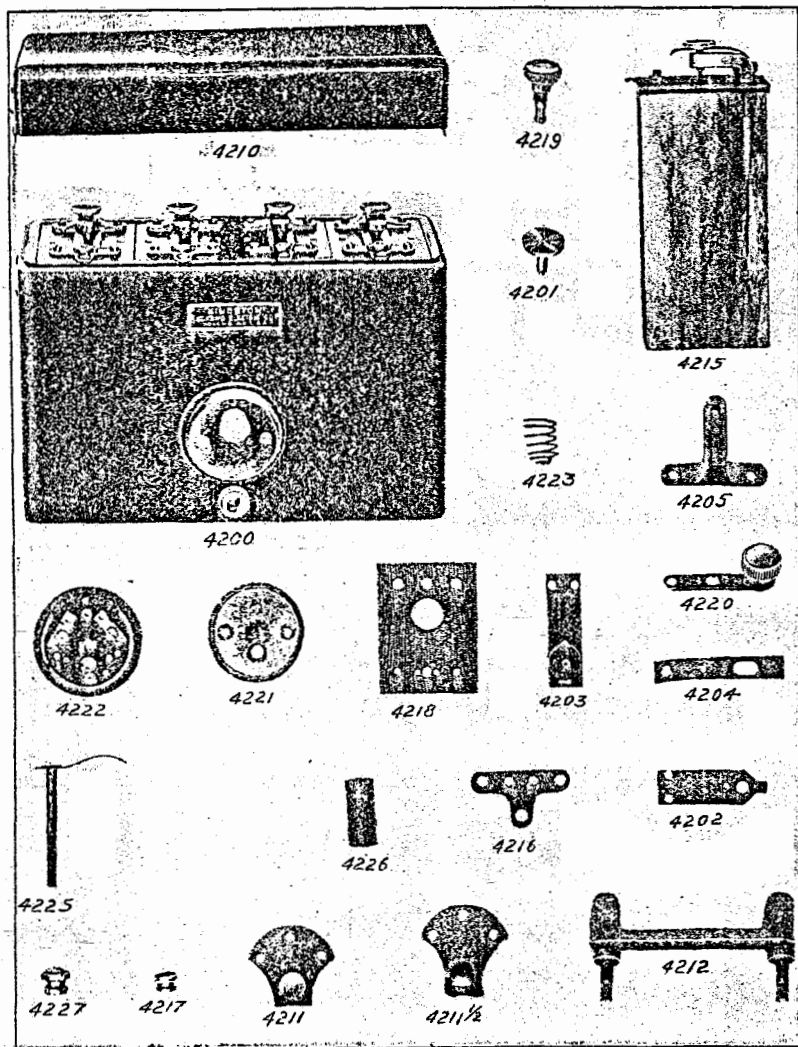


Plate 21—Kingston Coil and Parts

Order by these Nos.	Description	Price.	Code Word.
4127B	Carburetor adjusting rod bracket for roadster	30	
4128	Carburetor adjusting rod head pin	05	
4129A	Carburetor adjusting rod (18-13/16" long)	25	
4129B	Carburetor adjusting rod (18-23/32" long)	25	
4129C	Carburetor adjusting rod (19 1/2" long)	25	
4131	Carburetor adjusting bracket screw	05	
4132	Carburetor flange bolt	05	
4133	Carburetor flange bolt nut	03	
4134	Carburetor flange gasket	10	
4135	Carburetor priming rod	20	

Carburetor (1910 Holly)

4150	Carburetor complete	9 00	
4151	Float with lever	60	
4152	Float chamber	2 00	
4153	Float chamber gasket	10	
4154	Gasoline valve	60	
4155	Gasoline valve guide	50	
4157	Mixing chamber	2 00	
4158	Mixing chamber nut	40	
4159	Gasoline needle valve	50	
4160	Gasoline needle valve set screw	15	
4162	Throttle lever	25	
4163	Throttle gate lever adjusting screw	05	
4164	Throttle gate lever set screw	05	
4165	Screen holder and screen	40	
4166	Gasoline intake screen	10	
4167	Gasoline intake screen gasket	15	
4168	Primer assembly	60	
4170	Constant air supply	1 00	
4171	Constant air inlet cup screw	10	
4172	Carburetor drain cock	15	

Coil (Kingston)

4200	Coil complete	30 00	Tuccinger
4201	Adjusting screw with platinum point	75	Tuccingos
4202	Vibrator spring with platinum point	60	Tuccinfo
4203	Vibrator hammer	10	Tuccinide
4204	Adjusting screw lock spring	10	Tuccinief
4205	Adjusting screw bracket	40	Tuccinily
4209	Coil box complete	5 00	Tuccinon
4210	Coil box cover	80	Tuccinore
4211	Coil box cover fastener—lower	15	Tuccivus
4211 1/2	Coil box cover fastener—upper	15	Tuccivus
4212	Coil bracket	50	Tuccivut
4214	Coil bracket stud nut	05	Tucclades
4215	Coil units, each	6 00	Tucclamea
4216	Coil unit fastener and vibrator bar	25	Tucclamo
4217	Coil unit fastener thumb nuts, each	05	Tuccalvio
4218	Vibrator unit cover (fibre)	15	Tuccol'ad
4219	Switch plug	25	Tuccul'o
4220	Switch lever	25	Tuccomba
4221	Switch cover	25	Tuccombe
4222	Switch base assembly	75	Tuccomed

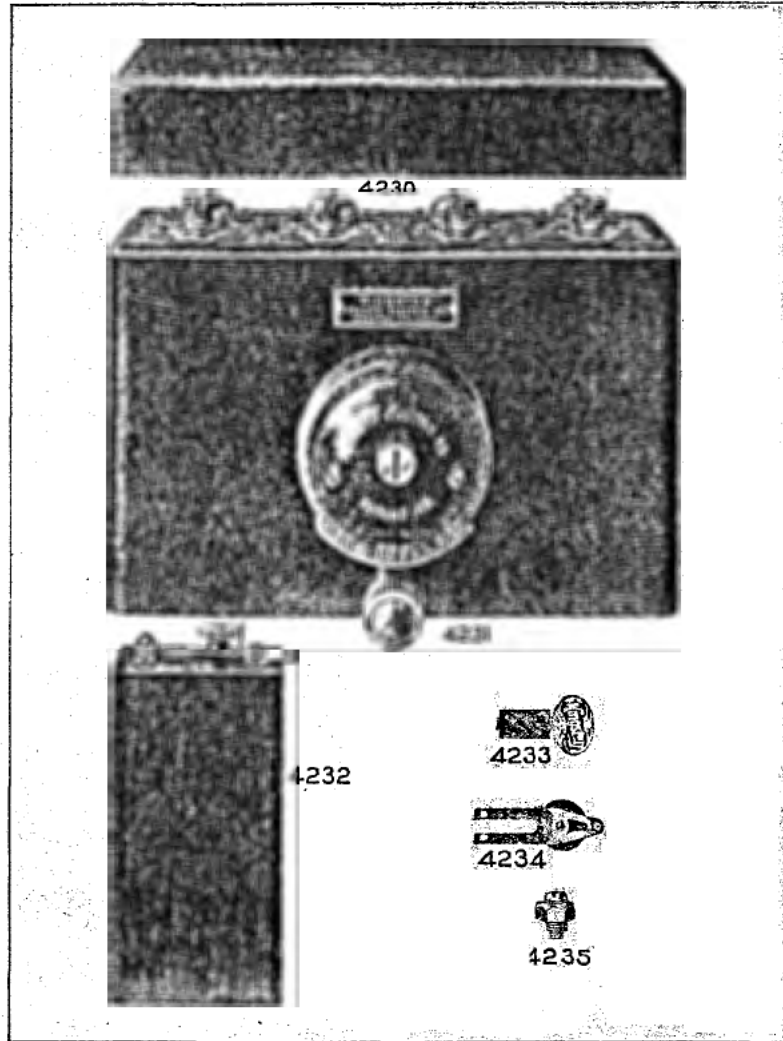


Plate 22—Coil (Kingston) New Style

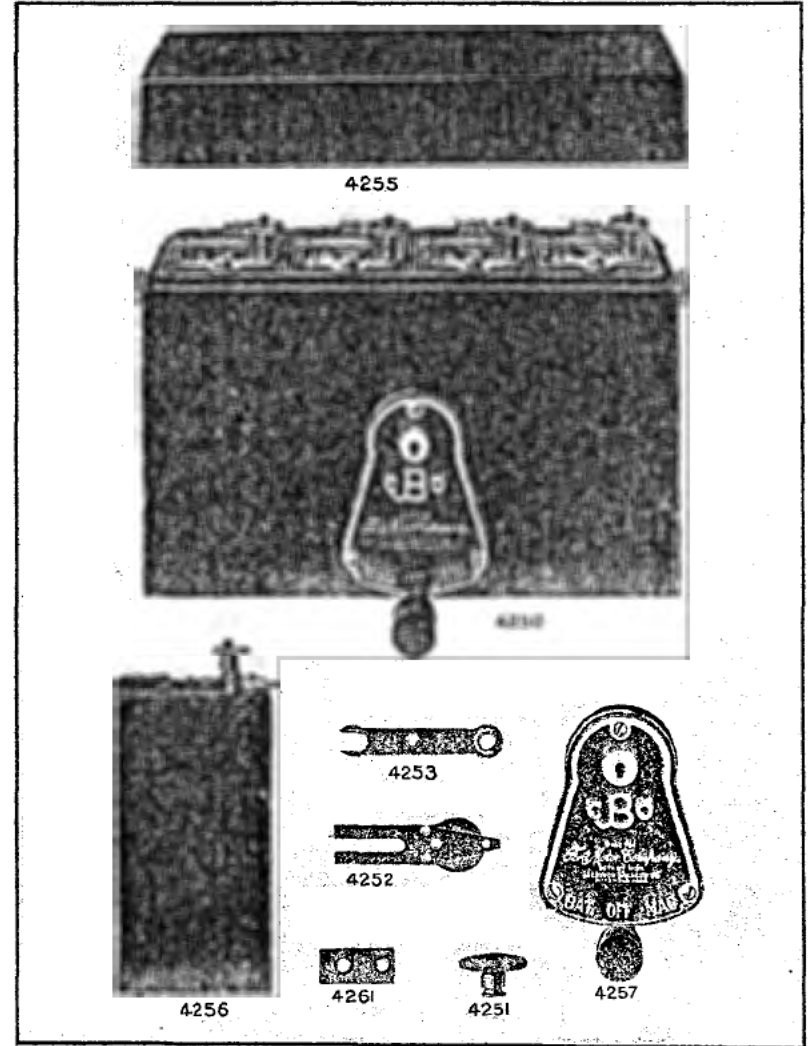


Plate 23—Jacobson-Brandon Coil and Parts