

Prices in effect January 1, 1911

# PRICE LIST OF PARTS—FORD MODEL T

*Ford Motor Company*

Main Factory and General Offices  
DETROIT, U. S. A.

BRANCHES

ATLANTA  
311 Peachtree Street

BOSTON  
147 Columbus Avenue

BUFFALO  
727 Main Street

CHICAGO  
1444 Michigan Avenue

CINCINNATI  
21 E. Ninth Street

CLEVELAND  
1914 Euclid Ave., S. E.

DALLAS  
445 Commerce Street

DENVER  
1552 Broadway

DETROIT  
Woodward and Boulevard

FARGO  
17 Broadway

FOREIGN DEPT.  
18 Broadway, N. Y.

HOUSTON  
800 Walker Avenue

INDIANAPOLIS  
526 North Capitol Avenue

KANSAS CITY  
1608 Grand Avenue

LONDON  
55 Shaftesbury Avenue

NEW YORK  
1723 Broadway

OMAHA  
1916 Harney Street

PARIS  
6 bis, rue Auber

PHILADELPHIA  
250 N. Broad Street

PITTSBURG  
5929 Baum Street

ST. LOUIS  
3669 Olive Street

SEATTLE  
532 19th Avenue, North

Canadian Trade Supplied by

The FORD MOTOR CO., of Canada, Limited  
WALKERVILLE, ONTARIO

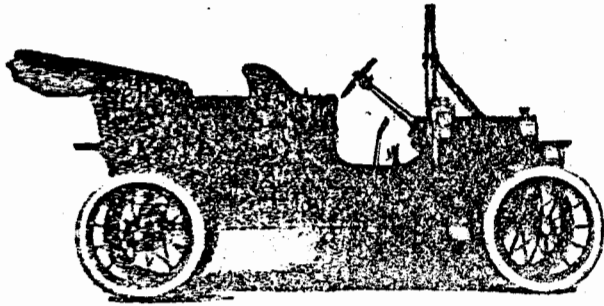
HAMILTON  
200 King St. West

MELBOURNE  
1035 William Street

MONTREAL  
75 Union Avenue

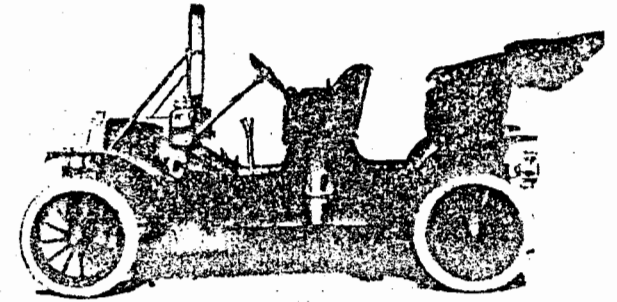
TORONTO  
53 Adelaide Street, W.

WINNIPEG  
309 Cumberland Avenue



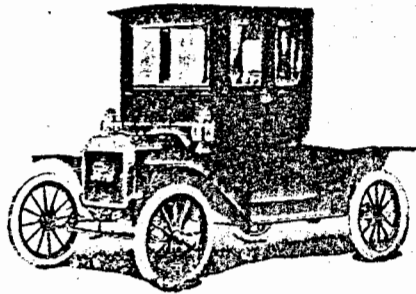
T TOURING CAR

# INSTRUCTIONS FOR ORDERING PARTS

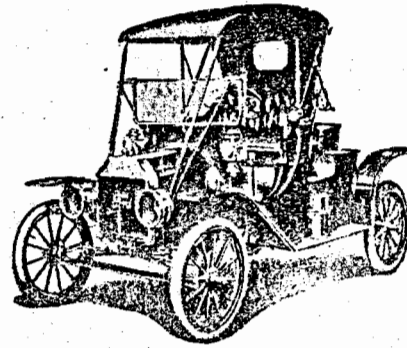


T TOURABOUT

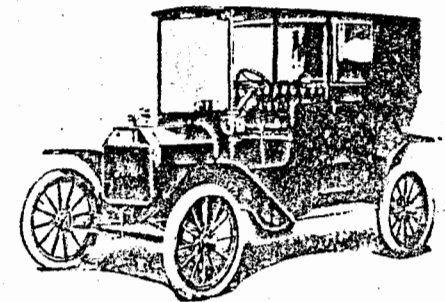
1. Order all parts through the nearest Branch or Dealer representing us in your territory, as parts are generally carried in stock by them.
2. Specify model, and give number and name of each part ordered, as well as the machine number.
3. Cash should accompany all orders. If it is desired to have parts shipped C. O. D., a deposit sufficient to cover transportation charges must be remitted with the order.
4. Mail orders must be accompanied by an amount sufficient to cover postage.
5. All prices are net f. o. b. Detroit.
6. Specify whether shipments are to be forwarded by mail, express or freight.
7. Orders for parts should be written separately from correspondence pertaining to other matters, as this will insure prompt handling by the proper department at the factory.



T COUPE



T ROADSTER



T TOWN CAR

# Telegraph Code

**T**O save expense, to expedite ordering and for the convenience of those ordering parts, we have arranged a code word for each part of the Model "T" car. In addition to the parts code we list below a brief general code covering miscellaneous instruction, questions and answers relative to the entering and shipping of parts ordered.

¶ In telegraphing an order for parts start with the code telling us how to ship, then use the word for the next part, stating the number required and then give the number of your car.

¶ The following will illustrate how to send in an express order for 8 push rods No. 3058, 1 fan No. 496, and 3 transmission band springs No. 3425:

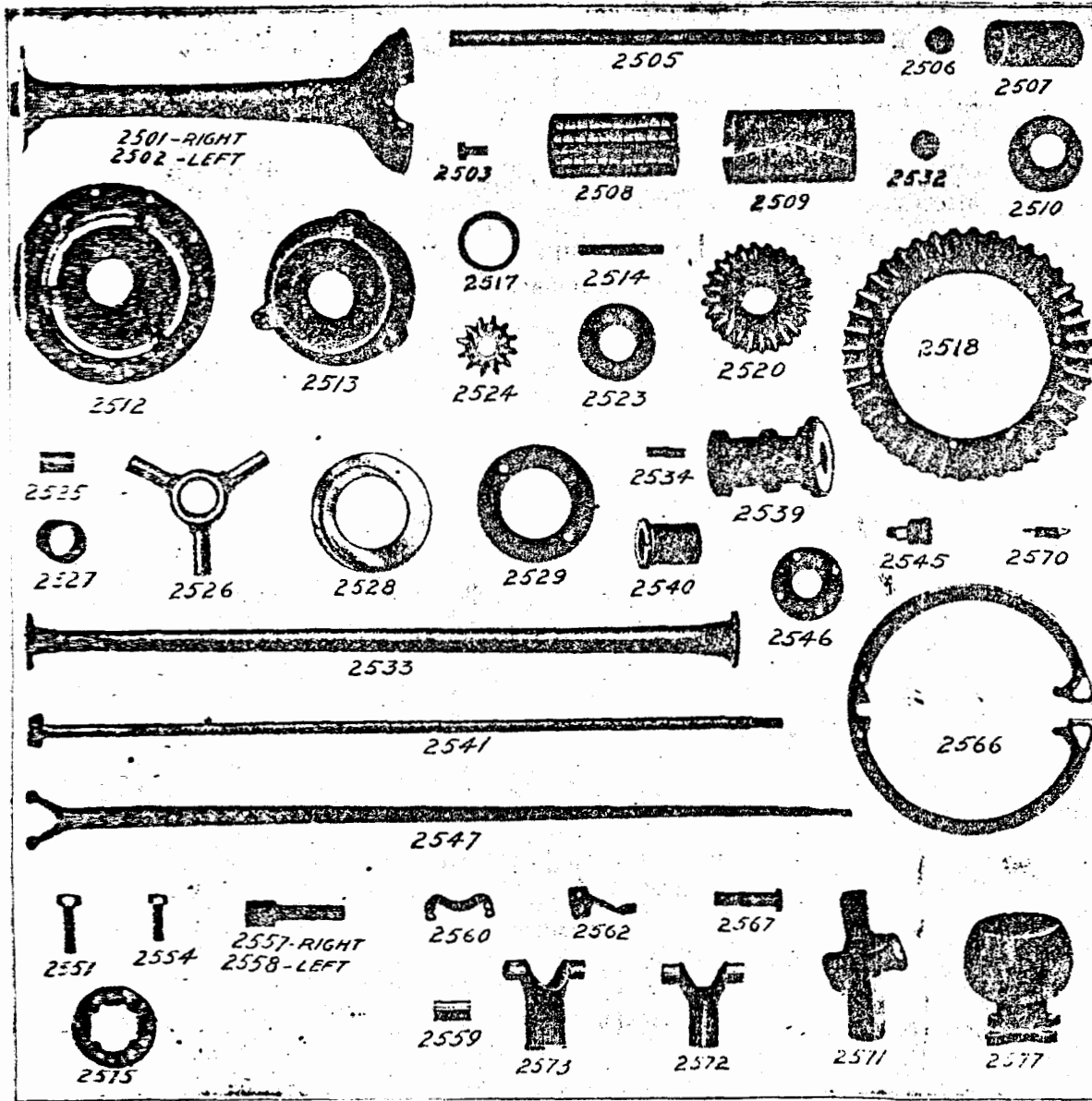
FORD MOTOR COMPANY,  
Detroit, Mich.

Toperig, eight Tubgener, one Tuburbain, three Tubmergin for car No. 2841.

Signed \_\_\_\_\_

<b>Toperig</b>	Ship to me (us) by express.	<b>Topflutch</b>	When and how will you ship parts called for in my (our) telegram of—
<b>Toperkleur</b>	Ship by express to	<b>Topfwasser</b>	When and how will you ship parts called for in my (our) letter of—
<b>Topermolen</b>	Ship to me (us) by American Express	<b>Topfgeld</b>	Cancel order for parts our (my) telegram of—
<b>Toperoker</b>	Ship to me (us) by U. S. Express	<b>Topfgicht</b>	Cancel order for parts my (our) letter of—
<b>Toperpool</b>	Ship to me (us) by Dominion Express	<b>Topfkiemer</b>	Add to our (my) telegraph order of—
<b>Topersteen</b>	Ship to me (us) by freight	<b>Topfartig</b>	Will send duplicate shipment by—express at once.
<b>Toper</b>	Ship to me (us) by mail	<b>Topfhaar</b>	Will send duplicate order—freight at once.
<b>Topfton</b>	When and how did you ship parts called for in my (our) telegram of—		

When writing messages in code, print the code words in capital letters.



Order by these Nos.	Description	Price	Code Word	Factory No.
2500	Rear axle assembly (roller bearing type) .....	\$100 00	Tubial	
2501	Rear axle housing—right half .....	16 00	Tuability	13
2502	Rear axle housing—left half .....	16 00	Tuadebant	23
2503	Rear axle housing bolt (specify length) .....	05	Tuadelan	42
2504	Rear axle housing bolt nut .....	02	Tuadiala	44
2505	Rear axle shaft (31" long; gear secured by large Woodruff key and pin) .....	2 50	Tuadiale	48
2506	Rear axle shaft thrust washer (fibre) .....	05	Tuadiba	39
2507	Rear axle shaft babbit bearing .....	80	Tuadibll	51
2508	Rear axle shaft roller bearing .....	1 00	Tuadiboa	97
2509	Rear axle shaft roller bearing sleeve .....	40	Tuadiboga	170
2510	Rear axle housing cap .....	10	Tuadifoot	58
2510 1/2	Rear axle outer roller bearing steel washer .....	05		199
2510 1/2	Rear axle outer roller bearing felt washer .....	05		104
2511	Differential assembly .....	30 00	Tuadiera	
2512	Differential case—left half .....	5 00	Tuadirect	103
2513	Differential case—right half .....	4 00	Tuadiferon	
2514	Differential case stud .....	10	Tuadistab	
2515	Differential case stud nut .....	05	Tuadora	5
2517	Differential case bushing (bronze) .....	60	Tuatre	19
2518	Differential drive gear—40 teeth (Specify whether gear is fastened with screws or rivets.) .....	8 00	Tuandobil	123
2519	Differential drive gear screw .....	02	Tuadones	103
2520	Differential gear (24 teeth—fastened to shaft with large Woodruff key and collar) .....	2 50	Tuarismo	13
2521	Differential gear key (Woodruff) .....	10	Tuarista	21
2522	Differential gear pin .....	05	Tuasible	36
2523	Differential gear thrust washer (fibre) .....	15	Tuaslon	32
2524	Differential pinion—12 teeth .....	1 25	Tuaslive	14
2525	Differential pinion bushing .....	25	Tuaslivey	93
2526	Differential spider with bushing .....	2 00	Tuasoribis	19
2527	Differential spider bushing (bronze) .....	40	Tuasso	18
2528	Differential thrust plate washer (babbit) .....	50	Tuasteno	30
2529	Differential thrust plate (steel) .....	20	Tuavely	31
2530	Differential thrust plate pin (13/32" long) .....	05	Tuavement	17
2531	Differential thrust plate pin (7/32" long) .....	05	Tuaveolen	37
2532	Differential housing oil plug .....	05	Tuaveolus	817
2534	Drive shaft and rear axle housing stud (1 1/4" long) .....	05	Tuavident	23
2535	Drive shaft rear axle housing stud nut .....	05	Tuavidico	8
2539	Drive shaft housing rear bushing (specify bore) .....	1 00	Tuavignor	240
2540	Drive shaft housing front bushing .....	60	Tuaviloux	69
2541	Drive shaft with pinion (specify diameter at rear bushing end) .....	8 00	Tuavitate	154

Plate 1—Rear Axle Parts

Rear Axle—Continued

Order by these No.	Description	Price.	Code Word.	Factory No.
2542	Drive shaft only (specify diameter at rear bushing end)	3 50	Tuavizra	87
2543	Drive shaft pinion—11 teeth	4 50	Tuavizde	16
2544	Drive shaft pinion key (Woodruff)	10	Tuavizamo	57
2545	Drive shaft grease cup	25	Tuavizape	195E
2546	Drive shaft thrust washer (steel)	15	Tuavizent	22E
2547	Rear radius rod	2 50	Tuavizora	152
2548	Rear radius rod nut	05	Tuavizon	77
2549	Rear radius rod lock nut	05	Tuavizque	78
2551	Rear radius rod bolt	05	Tubaccusa	53
2554	Rear radius rod ball joint support bolt	05	Tubacques	79
2555	Rear radius rod ball joint support bolt nut	05	Tubacribu	80
2557	Hub brake cam shaft—right	30	Tubact	92E
2558	Hub brake cam shaft—left	30	Tubactaro	61E
2559	Hub brake cam shaft bushing	20	Tubaction	173
2560	Hub brake spring	05	Tubactrem	63
2561	Hub brake spring rivet, per-do	05	Tubadjuva	64
2562	Hub brake cam shaft lever	30	Tubadjuz	62
2563	Hub brake cam shaft lever pin	02	Tubadmovo	7
2564	Hub brake cam shaft lever clevis pin	02	Tubagrege	65
2565	Hub brake lever clevis pin cotter	01	Tubagrest	66
2566	Hub brake shoe (cast iron)	75	Tubading	55
2567	Hub brake shoe support bolt	05	Tubaile	59
2568	Hub brake shoe support bolt nut	05	Tubalar	60
2570	Hub brake shoe coil spring	05	Tubalbens	67
2571	Universal joint assembly	2 75	Tubalbid	151
2572	Universal joint knuckle (male half)	1 00	Tubalboat	45E
2573	Universal joint knuckle (female half)	1 00	Tubalbay	46E
2574	Universal joint knuckle pin	05	Tubalbula	8
2575	Universal joint ring complete	75	Tubalcaid	49
2576	Universal joint ring rivets, each	05	Tubalkins	50
2577	Universal joint housing	1 00	Tubaltenu	70
2578	Universal joint housing plug	05	Tubambige	75
2579	Universal ball cap oil hole plug (brass)	10	Tubambros	156
2580	Universal ball cap felt gasket	10	Tubamigue	1518

Drive Shaft Assembly

2581	Drive shaft housing assembly (Parts 2582 to 2593 inclusive)	\$ 14 00	Tubamn	
2582	Drive shaft housing only (46- <sup>3</sup> / <sub>4</sub> " long)	8 00	Tubamno	74C
2583	Drive shaft roller bearing housing only	1 00	Tubamla	191
2584	Drive shaft roller bearing stud	10	Tuamlen	183
2585	Drive shaft roller bearing housing stud nut	02	Tubamluc	184
2586	Drive shaft roller bearing housing set screw	05	Tubament	101
2587	Drive shaft roller bearing	2 50	Tubamaub	192
2588	Drive shaft roller bearing distance plate	10	Tubamging	106
2589	Drive shaft ball race	60	Tubamgu	186
2590	Drive shaft ball retainer	05	Tubamgone	190
2591	Drive shaft ball thrust collar	30	Tubamg	188
2592	Drive shaft ball bearings (15) each	04	Tubamy	187
2593	Drive shaft roller bearing sleeve	50	Tubameny	107
2594	Drive shaft and pinion	8 00	Tubamly	154E
2595	Drive shaft with sleeve fitted	3 50	Tubamcud	87C
2596	Drive shaft sleeve	50	Tubamfore	163E
2597	Drive shaft pinion	4 50	Tubambin	16E

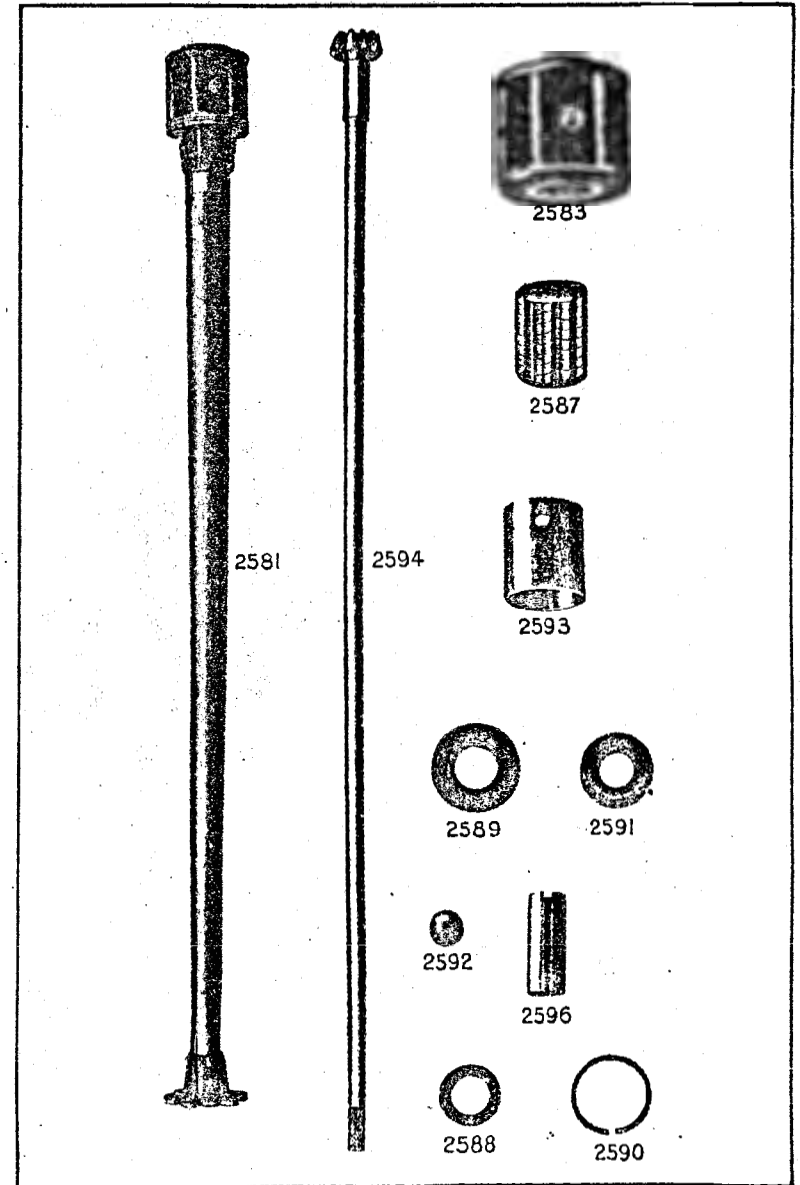


Plate 2—Roller Bearing Drive Shaft Parts

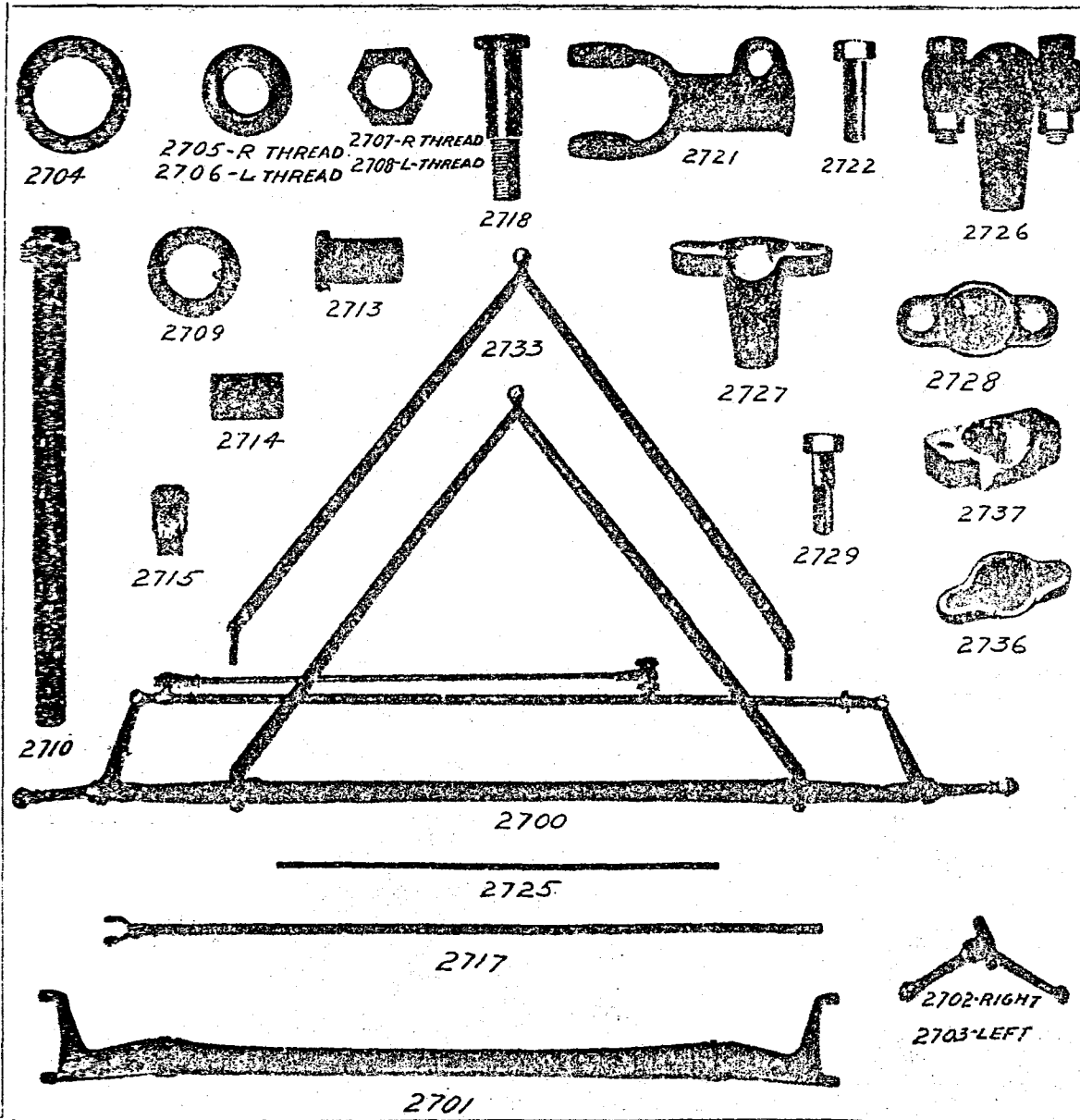


Plate 3—Front Axle Parts

Rear Axle 60" Tread

Order by these Nos.	Description.	Price.	Code Word.	Factory No.
2599	Rear axle assembly (roller bearing type) .....	100 00	Tubamit	1701C
2600	Rear axle housing—right .....	16 00	Tubamit	1702B
2601	Rear axle housing—left .....	16 00	Tubamore	1703
2602	Rear axle shaft (33" long) .....	2 50	Tubamoty	
2602½	Rear axle shaft (33" long; gear secured by large Woodruff key and collar) .....			
2603	Rear spring .....	14 00	Tubanton	1704
2604	Rear radius rod .....	2 50	Tubantully	1726
2605	Hub brake pull rod—right .....	.45	Tubapantor	1730B
2606	Hub brake pull rod—left .....	.45	Tubapegth	1721

Front Axle 56" Tread

2700	Front axle assembly (specify color) .....	\$ 24 00	Tubapenin	261
2701	Front axle only .....	8 00	Tubapent	202
2702	Spindle assembly—right .....	3 50	Tubaperes	203
2703	Spindle assembly—left .....	3 50	Tubaperio	204
2704	Spindle stationary cone (inside) .....	30	Tubapkalt	205
2705	Spindle adjusting cone—right thread .....	25	Tubaquat	206
2706	Spindle adjusting cone—left thread .....	25	Tubaqueos	207
2707	Spindle nut—right thread .....	05	Tubaquilo	208
2708	Spindle nut—left thread .....	05	Tubaquulos	209
2709	Spindle washer .....	05	Tubarabun	210
2710	Spindle bolt .....	50	Tubarando	211B
2711	Spindle bolt nut .....	05	Tubarator	212
2713	Spindle body bushing (both upper and lower) each .....	50	Tubardust	223
2714	Spindle arm bushing .....	20	Tubaresa	225
2715	Spindle oiler .....	15	Tubaresco	218
2716	Steering spindle connecting rod with yoke .....	2 60	Tubarmale	264
2717	Steering spindle connecting rod with ball pin only .....	2 00	Tubasper	269
2718	Steering spindle connecting rod bolt (2-7/16") .....	05	Tubassam	216
2719	Steering spindle connecting rod bolt nut .....	05	Tubassese	231
2721	Steering spindle connecting rod yoke .....	60	Tubastam	248
2722	Steering yoke clamping bolt (1-5/32" long) .....	05	Tubastane	250
2723	Steering yoke clamping bolt nut .....	02	Tubastape	251
2725	Steering gear connecting rod only .....	30	Tubastasi	258
2726	Steering ball socket assembly .....	1 00	Tubastato	266
2727	Steering ball socket only .....	50	Tubastava	253
2728	Steering ball socket cap .....	20	Tubasto	254B
2729	Steering ball socket bolt .....	05	Tubastral	255
2730	Steering ball socket bolt nut .....	03	Tubaud	266
2732	Steering ball socket lock nut .....	03	Tubaurabs	259
2733	Front radius rod .....	4 00	Tubaurad	263
2734	Front radius rod nut .....	05	Tubaurtos	245
2736	Front radius rod ball cap .....	20	Tubauster	217
2738	Front radius rod ball cap screw .....	05	Tubajlas	810

Front Axle 60" Tread

2760	Front axle only .....	8 00	Tubazit	1720
2761	Steering spindle connecting rod .....	2 00	Tubazinon	1725
2762	Steering gear connecting rod only .....		Tubajtoz	1719

Order by these Nos.	Description	Price.	Code Word.	No.
2800	Front wheel—red	8 00	Tubbace	231
2801	Front wheel—green	8 00	Tubbador	231
2802	Front wheel—gray	8 00	Tubbagrot	231
2802½	Front wheel—blue	8 00	Tubbagoat	
2803	Front hub assembly	6 00	Tubbalas	200
2804	Front hub outer race (small)	50	Tubbalbe	234
2805	Front hub inner race (large)	60	Tubbame	235
2806	Front hub outer ball retainer	10	Tubbanous	236
2807	Front hub inner ball retainer	10	Tubbabanted	237
2808	Front hub dust ring (steel)	25	Tubbaste	238
2809	Front hub felt washer	05	Tubbalano	239
2810	Front hub large balls (½")	05	Tubbiase	241
2811	Front hub small balls (¼")	04	Tubbiavan	249
2812	Rear wheel—red	8 00	Tubblbets	99
2813	Rear wheel—green	8 00	Tubblcor	99
2814	Rear wheel—gray	8 00	Tubblado	99
2814½	Rear wheel—blue	8 00	Tubbidonor	
2815	Rear hub	5 00	Tubblbims	102
2816	Rear hub key	05	Tubbiho	26
2817	Rear hub pin	02	Tubbibent	27
2818	Rear hub brake drum	1 00	Tubbiello	3
2819	Hub cap	60	Tubbisato	240
2820	Hub bolt	05	Tubbracha	28
2821	Hub bolt nut	02	Tubbrade	29
2822	Hub flange	60	Tubbrevia	233

**Frame**

2850	Frame assembly	15 00	Tubcandid	300
2851	Frame side member—right	5 00	Tubacarre	301
2852	Frame side member—left	5 00	Tubeaudal	302
2853	Frame front cross member	2 50	Tubcaute	303
2854	Frame rear cross member	2 50	Tubcaurn	304
2855	Frame front corner bracket—right	50	Tubcava	305
2856	Frame front corner bracket—left	50	Tubcavabo	306
2857	Frame rear corner bracket—right	50	Tubcaves	307
2858	Frame rear corner bracket—left	50	Tubcavoux	308
2863	Frame body bracket (on frame)	15	Tubcentda	344

**Gasoline Tank**

2900	Gasoline tank	4 00	Tubcerna	1303
2901	Gasoline tank filling plug	30	Tubcerno	1317
2902	Gasoline tank sediment bulb	35	Tubcernut	1319
2903	Gasoline tank bolt (25/32" long)	05	Tubclavio	1320
2904	Gasoline tank bolt (29/32" long)	05	Tubcmmun	1323
2905	Gasoline tank bolt nut	03	Tubconque	1321
2907	Gasoline tank stop cock	35	Tubconsay	1343
2908	Gasoline tank pet cock	25	Tubcontin	1342
2909	Gasoline tank feed pipe	40	Tubcoxques	1364
2910	Gasoline tank feed pipe pack nut	05	Tubcoquo	1374

**Fenders 56" Tread**

2925	Front Fender—left (round extension cap front end) specify color	4 00	Tubcorted	1413
2925½	Front fender—left (square cap front end) specify color	4 00	Tubcorture	
2926	Front fender—right (round extension cap front end) specify color	4 00	Tubcortex	1414

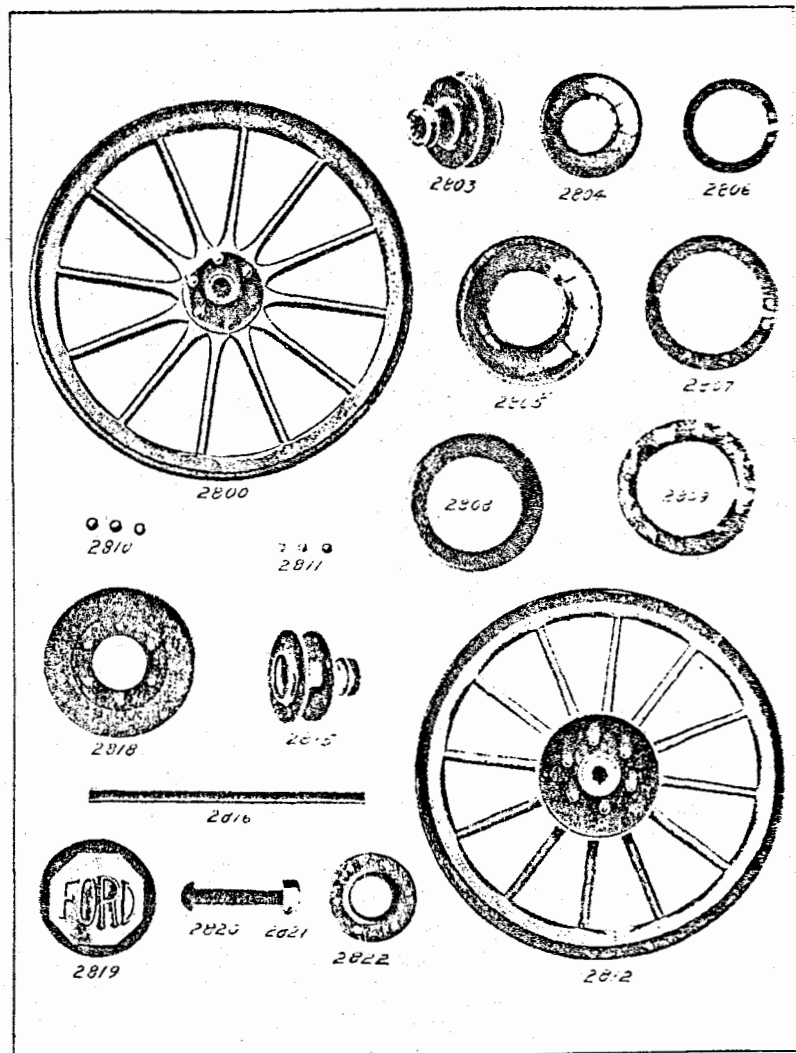


Plate 4—Wheels and Parts

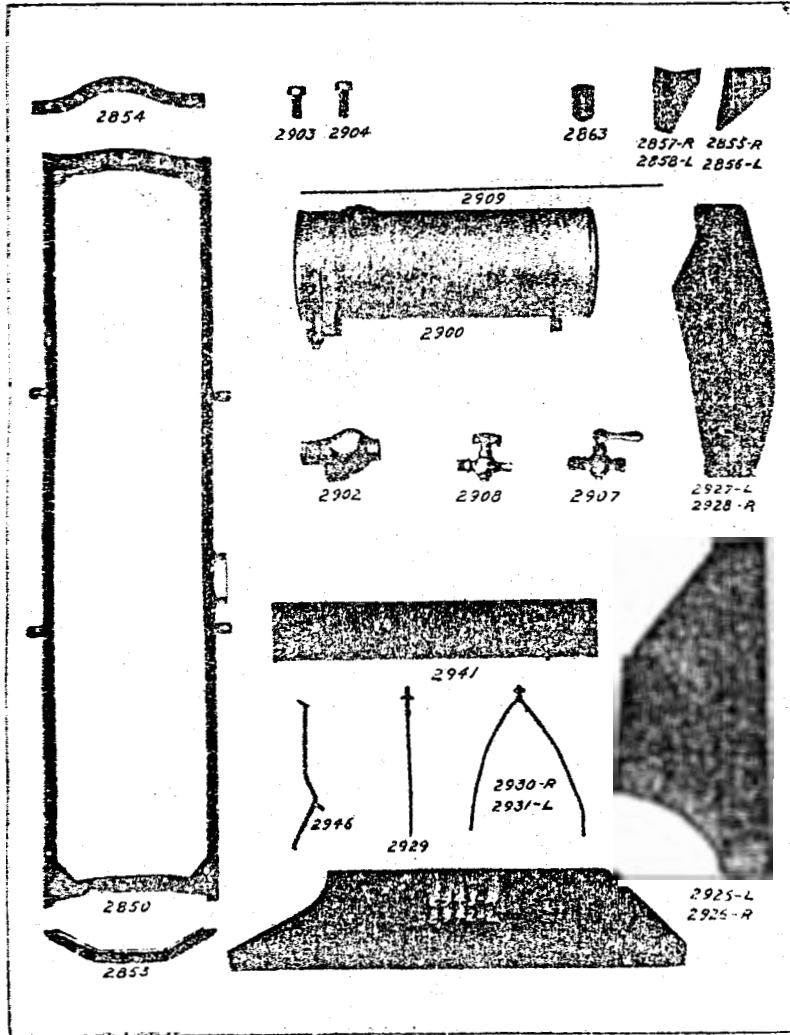


Plate 5--Frame, Fender and Tank Parts

Order by these Nos.	Description	Price.	Code Word.	Factory No.
2926 1/2	Front fender—right (square cap front end) specify color .....	4 00	Tubcortexia	
2927	Rear fender—left (with hole in apron for fender iron) specify color .....	3 50	Tubcosyn	1415B
2927 1/2	Rear fender—left (without hole in apron for fender iron) specify color .....	3 50	Tubcortom	1415
2928	Rear fender—right (with hole in apron for fender iron) specify color .....	3 50	Tubcoyter	1416B
2928 1/2	Rear fender—right (without hole in apron for fender iron) specify color .....	3 50	Tubcostal	1416
2929	Front fender iron (right or left) .....	1 00	Tuboranla	343
*2930	Rear fender iron (right) .....	1 50	Tubcrowd	342B
*2931	Rear fender iron (left) .....	1 50	Tubcroyler	349B
2932	Fender iron bolt, short .....	05	Tubcruned	345
2933	Fender iron bolt, long .....	05	Tubcrnet	347
2934	Fender iron bolt, nut .....	03	Tubcanaid	348
2935	Fender eye bolt .....	15	Tubcanozr	1942
2936	Fender eye bolt washer .....	03	TubcunuaB	1943
2937	Fender eye bolt nut .....	03	Tubcunuth	1944

\* Can be used with fenders on cars numbering below 2500 by punching hole in fender apron.

### Running Boards 56" Tread

2941	Running board (pressed steel) .....	1 00	Tubcunutt	1410B
2942	Running board metal shield—left .....	2 50	Tubcurvos	1408
2943	Running board metal shield—right .....	2 50	Tubcustos	1409
2944	Running board fender bolt .....	05	Tubcullie	1944
2945	Running board fender bolt nut .....	02	Tubdebous	1347
2946	Running board bracket .....	75	Tubdeacana	336
2947	Running board truss rod .....	40	Tubdeucep	338
2948	Running board truss rod nut .....	02	Tubdefend	339
2949	Running board bolt .....	05	Tubdegnoy	340B
2950	Running board bolt nut .....	02	Tubdelero	341
2951	Running board fender bolt washer .....	03	Tubdeloth	1959
2952	Running board metal shield for town car—left ..	2 50	Tubdelom	1731
2953	Running board metal shield for town car—right ..	2 50	Tubdelore	1732

### Fenders and Running Boards—60" Tread

3875	Front fender—right .....	4 00	Tubdelta	1715
3876	Front fender—left .....	4 00	Tubdeisog	1716
3877	Front fender iron (right and left) .....	1 00	Tubdeming	1713
3878	Rear fender iron—left .....	1 50	Tubdentick	1711
3879	Rear fender iron—right .....	1 50	Tubdentory	1712
3880	Running board metal shield—right .....	2 50	Tubfrpylc	1717
3881	Running board metal shield—left .....	2 50	Tubdegrin	1718
3882	Running board brackets, each .....	75	Tubdercip	1714
3883	Running board truss rods, each .....	40	Tubdestirn	1708

### \*Running Boards

1410	Running board complete—right .....	4 00	Tubcurote	
1411	Running board complete—left .....	4 00	Tubcurral	
1412	Running board rubber matting .....		Tubcurrod	
1421	Running board brass (rear end) .....		Tubcurotano	
1422	Running board brass (left outside) .....			



Fenders and Running Boards—Continued

Order by these Nos.	Description.	Price.	Code Word.	Factory No.
1423	Running board brass (front end)	30	Tubdeacon	
1424	Running board brass screw	01	Tubdealas	
1425	Running board brass (right outside)	75	Tubdealbo	
1486	Running board brass (left inside)	75	Tubdean	
1487	Running board brass (right inside)	75	Tubdeary	
1488	Running board brass screw (1/2 inch)	01	Tubdebamus	
1344	Running board fender bolt	05	Tubdebile	
1347	Running board fender bolt nut	02	Tubdebous	
340	Running board bolt	05	Tubdela	

\* Running boards for cars numbering below 2500.

Motor (Thermo-Syphon)

*3000	Cylinder only	\$ 24 00	Tubdlat	400E
*3001	Cylinder head	4 00	Tubdianon	401C
3001 1/2	Cylinder head for metric thread foreign spark plugs			
*3002	Cylinder head copper gasket	75	Tubdibeul	402B
*3003	Cylinder head cap screw (7/16" x 2-7/16")	05	Tubdicken	483B
3003 1/2	Cylinder head cap screw	05		
*3004	Cylinder head outlet connection	25	Tubdictel	446C
*3005	Cylinder head outlet connection copper gasket	15	Tubdidron	445E
*3006	Cylinder head outlet hose (3-1/4" long x 2" inside)	30	Tubdienez	448B
3007	Cylinder head outlet hose clip	10	Tubdifido	607
*3008	Cylinder head outlet connection screw (1-21/64" long)	05	Tubdigitor	550C
*3009	Cylinder cover (front end)	1 25	Tubdivory	403E
3010	Cylinder cover bolt (13/16" long)	05	Tubdilosty	589
3011	Cylinder cover cap screw	05	Tubdimida	432
3012	Cylinder cover felt	10	Tubditasm	504
*3013	Cylinder cover paper liner	05	Tubdlteck	505E
3014	Cylinder cover bolt (1-7/32" long)	05	Tubdtolt	484
*3015	Cylinder water inlet connection (cast iron)	25	Tubdtoyer	442E
3016	Cylinder water inlet connection screw (1-1/2" long)	05	Tubdtunck	597
3017	Cylinder water inlet pack nut	15	Tubdturo	444
3018	Cylinder water inlet gasket	15	Tubdluray	596
3019	Cylinder water jacket plug	10	Tubdvid	557
*3020	Piston complete (3 ring type)	2 50	Tubdlxons	580E
*3021	Piston only (3 ring type)	2 00	Tubdiyert	418C
*3022	Piston pin	50	Tubdzolt	419E
3023	Piston ring	17	Tubdoctor	422
*3024	Connecting rod (no bushing in upper end)	2 50	Tubdodder	587E
3025	Connecting rod cap bolt	05	Tubdoghot	489E
3026	Connecting rod cap bolt nut	03	Tubduable	490
3027	Connecting rod cap bolt cotter pin	01	Tubducemus	500
3029	Connecting rod clamp screw (1" long)	05	Tubductub	578
3030	Crank shaft	12 00	Tubdudery	498E
3031	Crank shaft rear bearing cap	1 10	Tubduniot	405E
3032	Crank shaft front bearing cap	1 00	Tubdvort	406E
3033	Crank shaft center bearing cap	1 00	Tubdupcat	407E
3034	Crank shaft bearing cap	15	Tubduplas	408

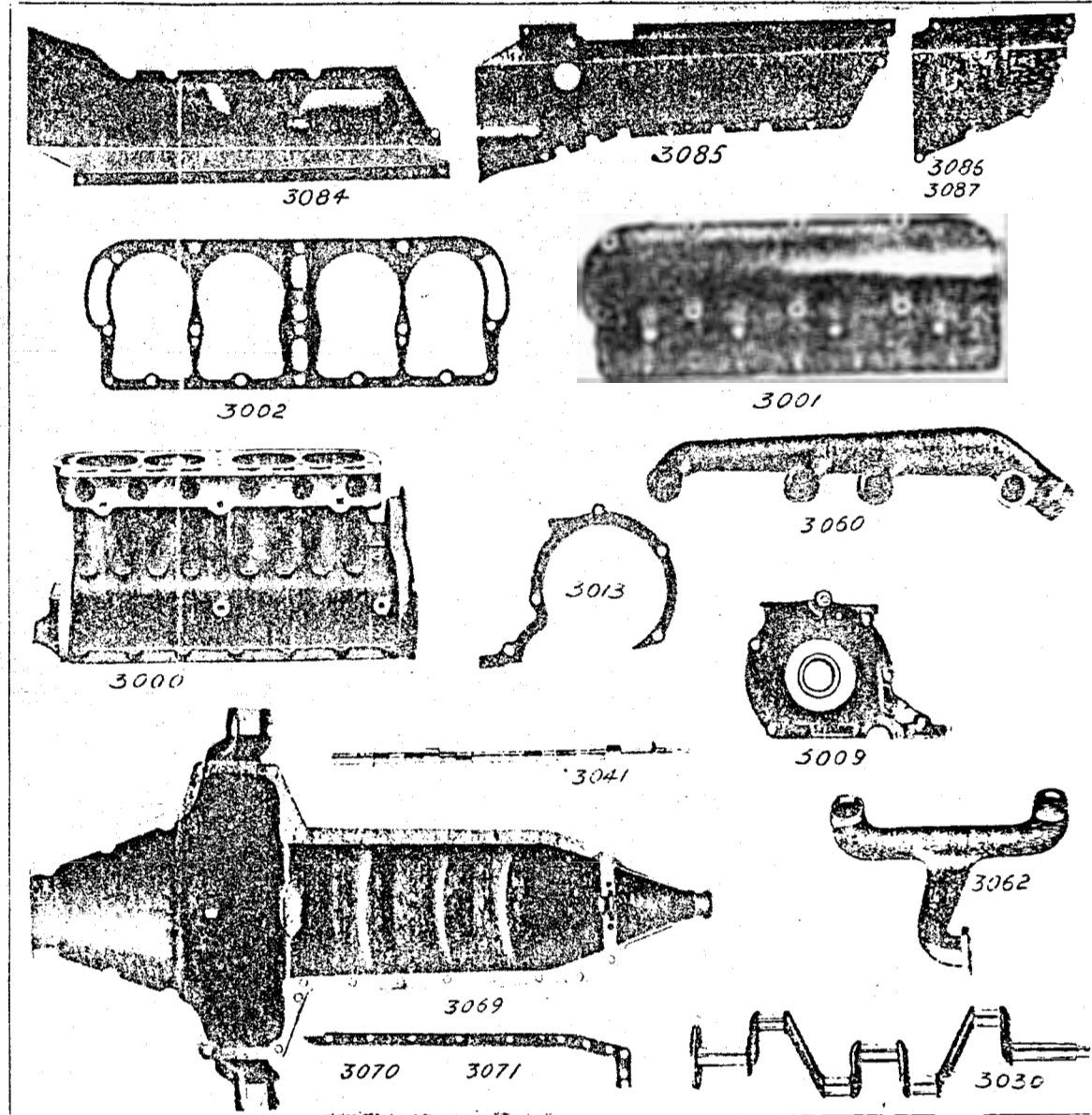
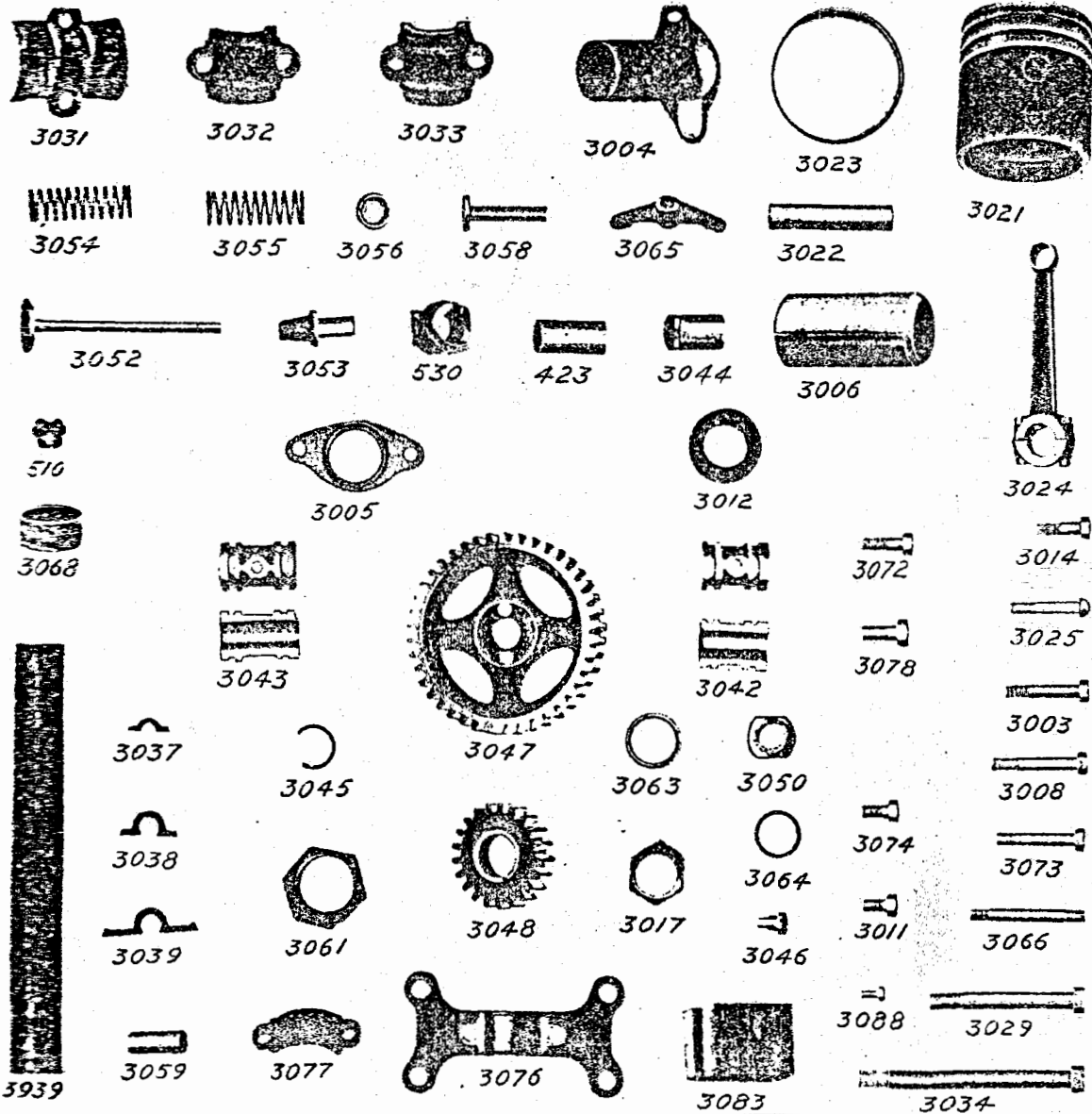


Plate 6—Motor Parts



Motor (Thermo-Syphon)—Continued

Part No.	Description.	Price.	Code Word.	Factory No.
3035	Crank shaft bearing bolt nut	05	Tubdorrum	409
3038	Crank shaft rear bearing bolt (4-7/16" long)	15	Tubduros	478
3037	Crank shaft center bearing brass liner	05	Tubdecorn	501B
3038	Crank shaft center bearing brass liner	05	Tubdedurl	502B
3039	Crank shaft rear bearing brass liner (Brass liners furnished .002, .004 or .006 thick as required).	05	Tubdenock	503B
3040	Crank shaft starting pin (2-11/16" long)	05	Tubdeplr	529B
3041	Cam shaft	6 00	Tuberamid	410
3042	Cam shaft front bearing	50	Tuberanol	411
3043	Cam shaft center bearing	40	Tubervrox	412B
3044	Cam shaft rear bearing (bronze)	30	Tubexcuse	413
3045	Cam shaft bearing ring	05	Tubexplic	534
3046	Cam shaft bearing set screw	05	Tubexudo	414
3047	Cam shaft gear—large	1 50	Tubfeum	415
3048	Cam shaft gear—small	1 00	Tubfeunos	416
3049	Cam shaft gear dowel pin	05	Tubfidros	417
3050	Cam shaft large gear lock nut	15	Tubfolice	475
3051	Cam shaft small gear key	05	Tubfolion	477
3052	Exhaust and inlet valve	30	Tubfolius	424B
3053	Exhaust and inlet valve bushing.	15	Tubfolom	428
3054	Intake valve spring	10	Tubfumes	430
3055	Exhaust valve spring	10	Tubfuscus	431
3056	Valve spring seat	05	Tubfosk	425
3057	Valve spring seat pin	01	Tubgamine	429
3058	Push rod	30	Tubgener	426
3059	Push rod bushing	20	Tubgenus	427
3060	Exhaust pipe	1 50	Tubglbeux	511
3061	Exhaust pipe pack nut—brass	40	Tubglabre	513
3062	Inlet pipe	2 00	Tubglacal	512
3063	Inlet and Exhaust pipe gasket	05	Tubgronde	513
3064	Inlet and Exhaust pipe gland	05	Tubhasitab	514
3065	Inlet and Exhaust pipe clamp	15	Tubhaste	515
3066	Inlet and Exhaust pipe clamp stud (3-5/16" long)	05	Tubhircos	516
3067	Inlet and Exhaust pipe clamp nut	03	Tubhircum	517
*3068	Breather pipe (brass—1-1/4" long)	20	Tubicurry	585
*3069	Crank and transmission case assembly	20 00	Tubidreso	1526B
3069 1/2	Crank case front end bearing	1 50		
3070	Crank case and cylinder gasket—left	10	Tublendo	888
3071	Crank case and cylinder gasket—right	10	Tubleron	897
3072	Crank case and cylinder front cover cap screw	05	Tubrfott	433
3073	Crank case arm bolt—side (2 1/4" long)	05	Tubigites	479
3074	Crank case arm bolt—top (25/32" long)	05	Tubilla	480
3075	Crank case arm bolt nut	03	Tublimer	481
*3076	Crank case front end frame bearing	60	Tublinasty	320B
3077	Crank case front end bearing cap	40	Tublinees	321
3078	Crank case front end bearing screw	05	Tublmlma	322
3079	Crank case overflow petcock	25	Tublnock	1515
3080	Transmission drain cup—plug	05	Tubimos	817
3081	Crank case oil tube	50	Tubimudy	843B

Plate 7—Motor Parts

Order by these Nos.	Description	Price.	Code Word.	Factory No.
3082	Crank case oil tube clamp (on magneto coil support)	10	Tubimughot	548B
3083	Transmission case arm block—wood	05	Tubinana	890
3084	Engine pan—right	60	Tubinanis	1330
3085	Engine pan—left	60	Tubinda	1331
3086	Transmission pan—left	30	Tubindate	1332
3087	Transmission pan—right	30	Tubindebat	1333
3088	Engine and transmission pan bolt	05	Tubindece	1335
3089	Engine and transmission pan nut	02	Tubundeso	1338

(Order following parts for machines below 2000.)

**Motor—Pump Circulation**

400	Cylinder with head assembled	\$ 28 00	Tubdelega
402A	Cylinder only (7/16" holes for cap screws)	21 00	Tuonelock
401	Cylinder head (3/8" holes for cap screws)	4 00	Tubdeclury
401B	Cylinder head (7/16" holes for cap screws)	4 00	Tubdement
402	Cylinder head gasket	75	Tubdented
403	Cylinder cover (front end)	1 25	Tubdepost
483	Cylinder head cap screw	05	Tubdigens
483B	Cylinder head cap screw (7/16")	05	Tubdepostum
446	Cylinder head outlet brass connection (3/8" screw holes)	60	Tubdlacox
446B	Cylinder head outlet brass connection (7/16" screw holes)	60	Tubdlbbel
550	Cylinder head outlet brass connection screw (3/8")	05	Tubdlcite
550B	Cylinder head outlet connection screw (7/16")	05	Tubdihot
445	Cylinder head outlet brass connection gasket	15	Tubdlala
448	Cylinder head outlet hose (1 3/8" inside x 1 1/2")	40	Tubdlalat
505	Cylinder cover paper liner	10	Tubdlitas
442	Cylinder water inlet brass connection	30	Tubdlited
444	Cylinder water inlet pack nut	15	Tubdlituro
568B	Piston assembly (2 ring type—used with connecting rod having piston pin pushing)	2 50	Tubdivine
418	Piston only	2 00	Tubdivisti
419	Piston pin	35	Tubdoceas
420	Piston pin screw	05	Tubdoceba
587	Connecting rod assembly (bushing in head end)	3 00	Tubdolor
423	Connecting rod piston pin bushing	25	Tubducton
498	Crank shaft	13 00	Tubdument
530	Crank shaft ratchet	40	Tubepinex
529	Crank shaft ratchet pin	02	Tubequal
543	Crank case oil tube	50	Tubepost
520	Crank case front end frame bearing	60	Tubilnem
582	Breather pipe (1" tube)	90	Tubhorido
800	Crank case and Transmission lower case	20 00	Tubidres

**Commutator**

(Send samples of parts required)

3200	Commutator assembly	\$ 2 75	Tubindud	404
3201	Commutator body	1 00	Tubinental	457
3202	Commutator cover	15	Tubinifer	461
3202 1/2	Commutator cover thumb nut	05	Tubiniferol	634
3203	Commutator cover screw—brass	02	Tubinifos	495
3204	Commutator body screw	02	Tubinifoud	463
3205	Commutator brush assembly	75	Tubinifule	574
3206	Commutator brush cap (steel)	05	Tubunsule	468
3207	Commutator brush cap pin	02	Tubinirat	466
3208	Commutator fibre assembly	1 00	Tubuntroe	575
3209	Commutator contact point	10	Tubinvine	464
3210	Commutator contact point nut	05	Tubinvito	472
3211	Commutator contact point fibre insulator	05	Tubirate	473

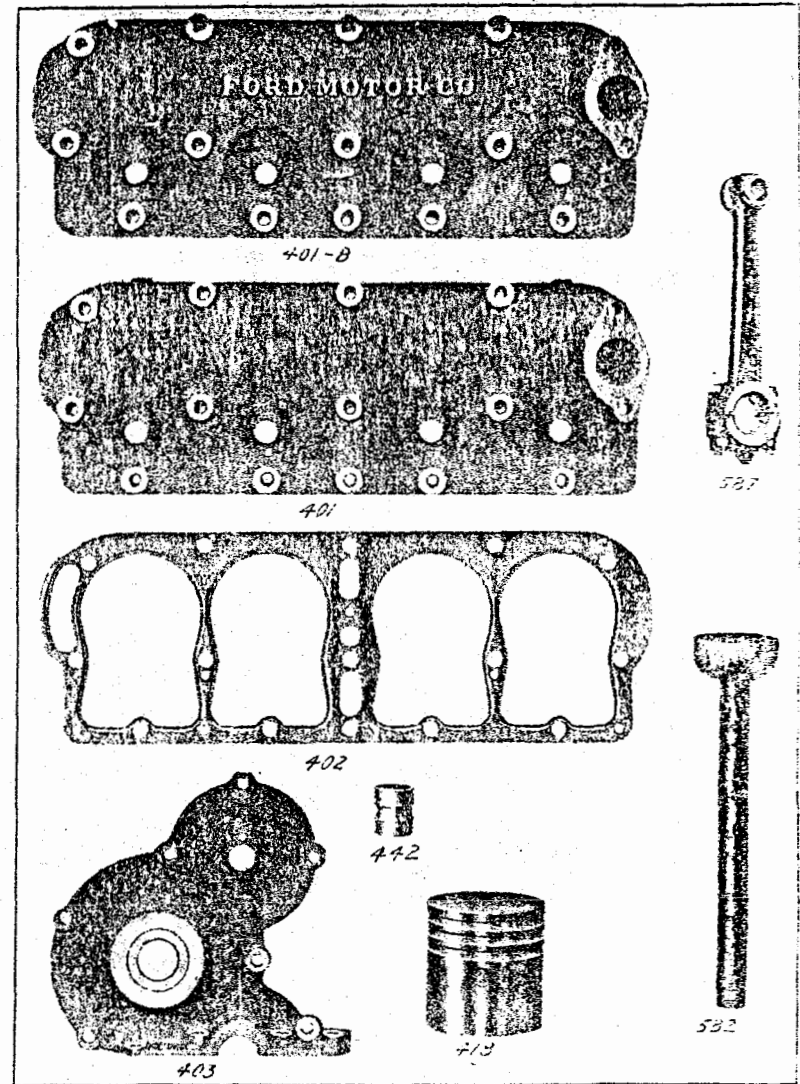


Plate 8—Motor Parts

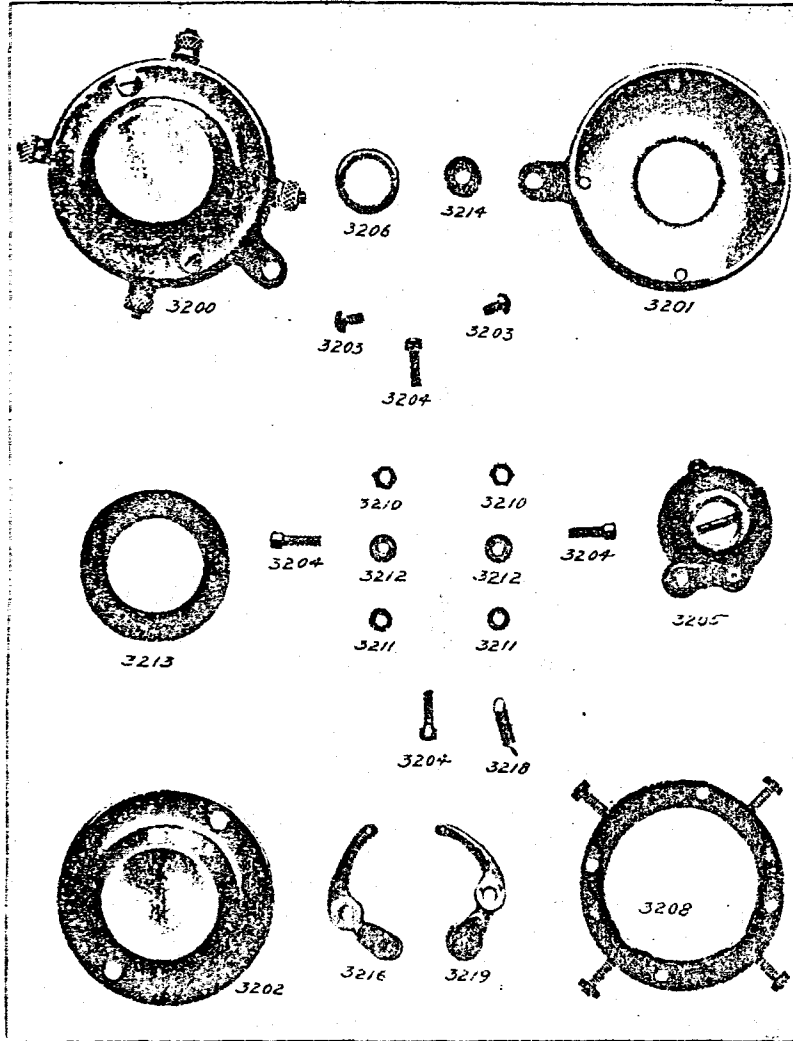


Plate 9--Commutator Parts

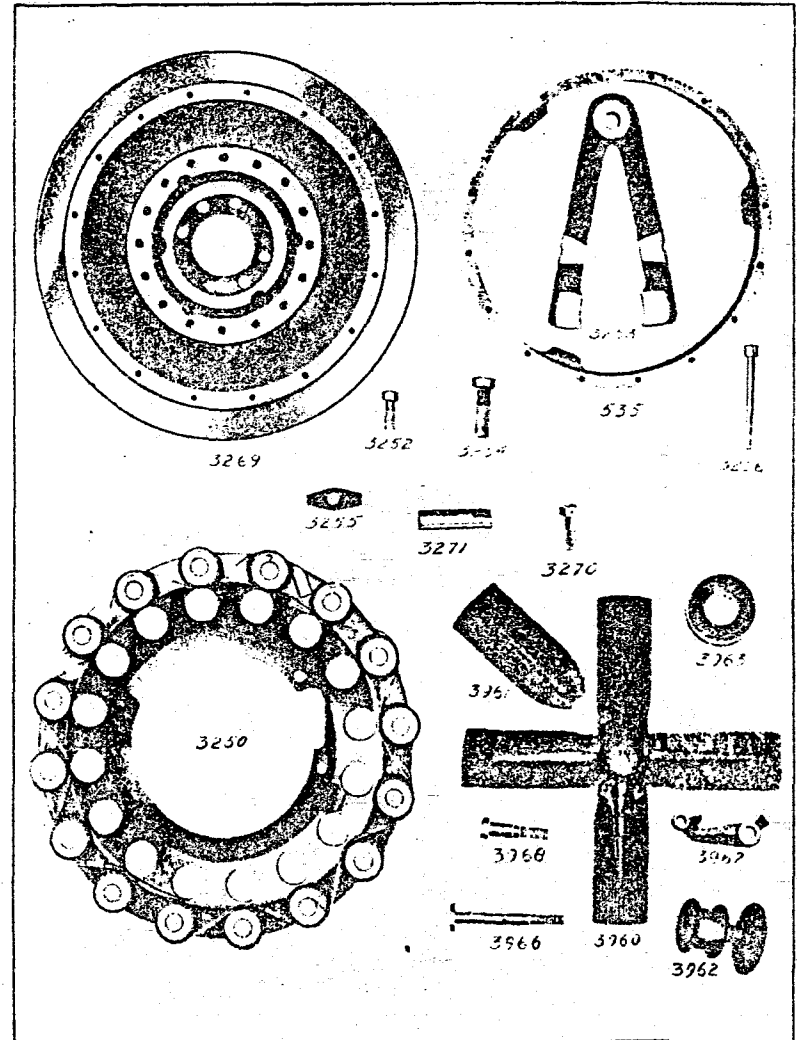
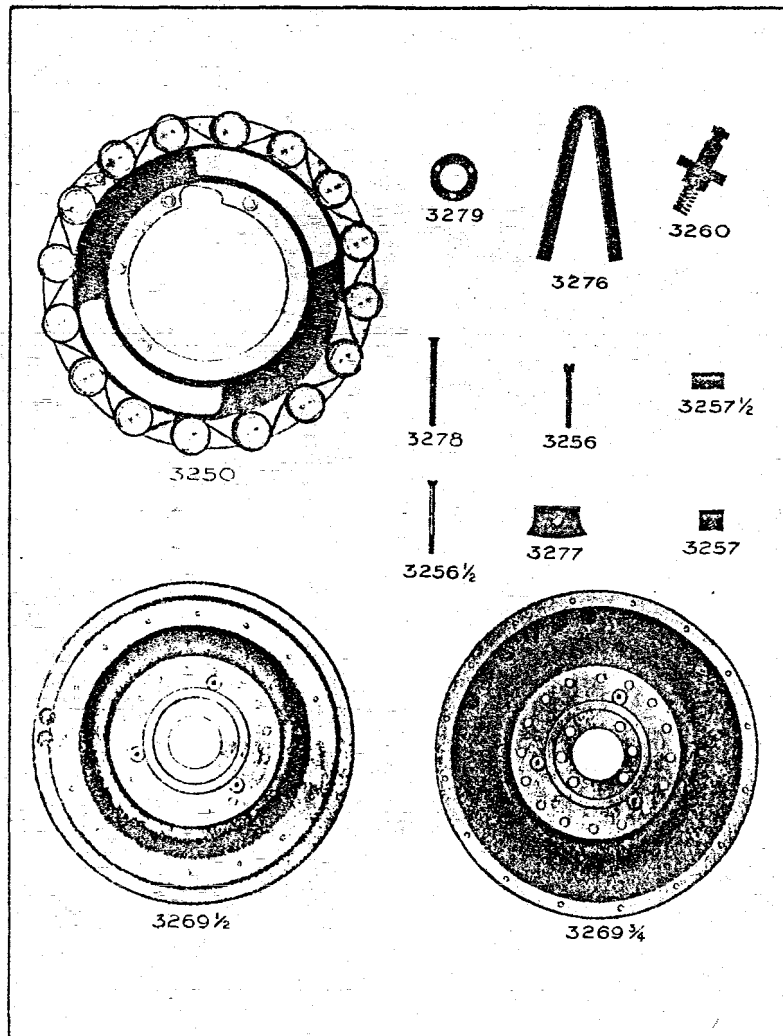


Plate 10--Fly Wheel, Magneto and Fan Parts



Order by these Nos.	Description	Price.	Code Word.	Factory No.
3212	Commutator thumb nut—brass .....	05	Tubiranno	467
3213	Commutator felt ring .....	10	Tubiratco	474
3214	Commutator roller (1/2" outside diameter) .....	10	Tubiratos	470B
3215	Commutator roller pin .....	02	Tubirebbe	465
3216	Commutator roller arm (for 1/2" roller) .....	30	Tubireld	450B
3217	Commutator roller arm pin .....	02	Tubiremo	475
3218	Commutator roller spring .....	05	Tubirlams	469
3219	Commutator roller and arm .....	40	Tubireno	471
3220	Commutator lock nut .....	10	Tubiruner	470
3221	Commutator roller (1/2" outside diameter) .....	10	Tubiruner	470
3222	Commutator roller arm (for 1/2" roller) .....	30	Tubirlyler	460

**Magneto**

3250	Magneto coil assembly (used in connection with 1/2" magnets) .....	12 00	Tubissais	531B
3250 1/2	Magneto coil assembly (used in connection with 9/16" magnets) .....	12 00	Tubissoir	
3250 1/4	Magneto coil assembly (used in connection with 3/8" magnets) .....	12 00	Tubissmar	
3252	Magnet coil support screw to crank case .....	05	Tubisse	455
3254	Magnet bolt (1-3/16" long) .....	05	Tubista	537
3255	Magnet washer .....	05	Tubistels	540
3256	Magnet washer screw (1 3/4" long) .....	05	Tubitaped	541A
3256 1/2	Magnet washer screw (2" long) .....	05	Tubitaped	541B
3257	Magnet brass supports (length 3/4" .....	15	Tubitaro	535B
3257 1/2	Magnet brass supports (29/32" long) .....	15	Tubitaro	535C
3258	Magnet clamp screw wire (1 1/4" long) .....	05	Tubitates	533
3259	Magnet clamp screw wire (30" long) .....	05	Tubitate	533
3260	Magneto contact assembly (on trans. cover) .....	50	Tubjacmus	1545
3261	Magneto contact thumb nut .....	10	Tubjccent	1506
3262	Magneto contact spring .....	05	Tubjected	1506
3263	Magneto contact washer (brass) .....	05	Tubjection	1510
3264	Magneto contact tube with fibre .....	20	Tubjectif	1515
3266	Magneto insulating fibre washer screw .....	03	Tubjewel	1505
3269	Fly wheel (style used on cars 1 to 17500) .....	7 00	Tubjubago	701
3269 1/2	Fly wheel (style used on cars 17500 to 20500) .....	7 00	Tubjubador	731A
3269 3/4	Fly wheel (style used on cars above 20500) .....	7 00	Tubjubacon	731B
3270	Fly wheel cap screw .....	10	Tubjugdor	721
3271	Fly wheel dowel pin .....	10	Tubjugete	722
3272	Magneto coil support shim .....	10	Tubjurtig	534
3273	Magnet bronze support (used on cars above 2500) .....	3 00	Tubitaron	535
3274	Magnet (thickness at face 1/2") .....	75	Tubissimo	535B
3275	Magnet (thickness at face 9/16") .....	75	Tubissimere	
3276	Magnet (thickness at face 5/8" used on cars above 20500) .....	50	Tubissimine	
3277	Magnet clamp .....	05	Tubissimar.	623
3278	Magnet clamp screw .....	05	Tubissimost	625
3279	Magneto insulating washer .....	04	Tubissimack	563

\*Used on machines numbering below 2600.

**Transmission**

3300	Transmission assembly with fly wheel .....	70 00	Tubjugmos	744B
3301	Transmission reverse plate assembly .....	6 50	Tubjugorm	747
3302	Transmission reverse plate .....	2 50	Tubjuncto	702
3303	Transmission reverse gear (30 teeth) .....	2 75	Tubjunk	703
3304	Transmission reverse gear bushing .....	1 00	Tubjurm	705
3305	Transmission reverse plate rivet .....	03	Tublaba	708
3306	Transmission slow speed plate assembly .....	6 75	Tublabana	745
3307	Transmission slow speed plate .....	2 50	Tublabend	706
3308	Transmission slow speed gear (21 teeth) .....	3 00	Tublabilia	707
3309	Transmission slow speed gear bushing .....	1 00	Tublabo	745
3310	Transmission slow speed plate rivet .....	03	Tublabout	708
3311	Transmission brake drum assembly .....	10 00	Tublabout	750
3312	Transmission brake drum only .....	5 00	Tublabout	709
3313	Transmission triple gear assembly .....	6 00	Tublabout	751B

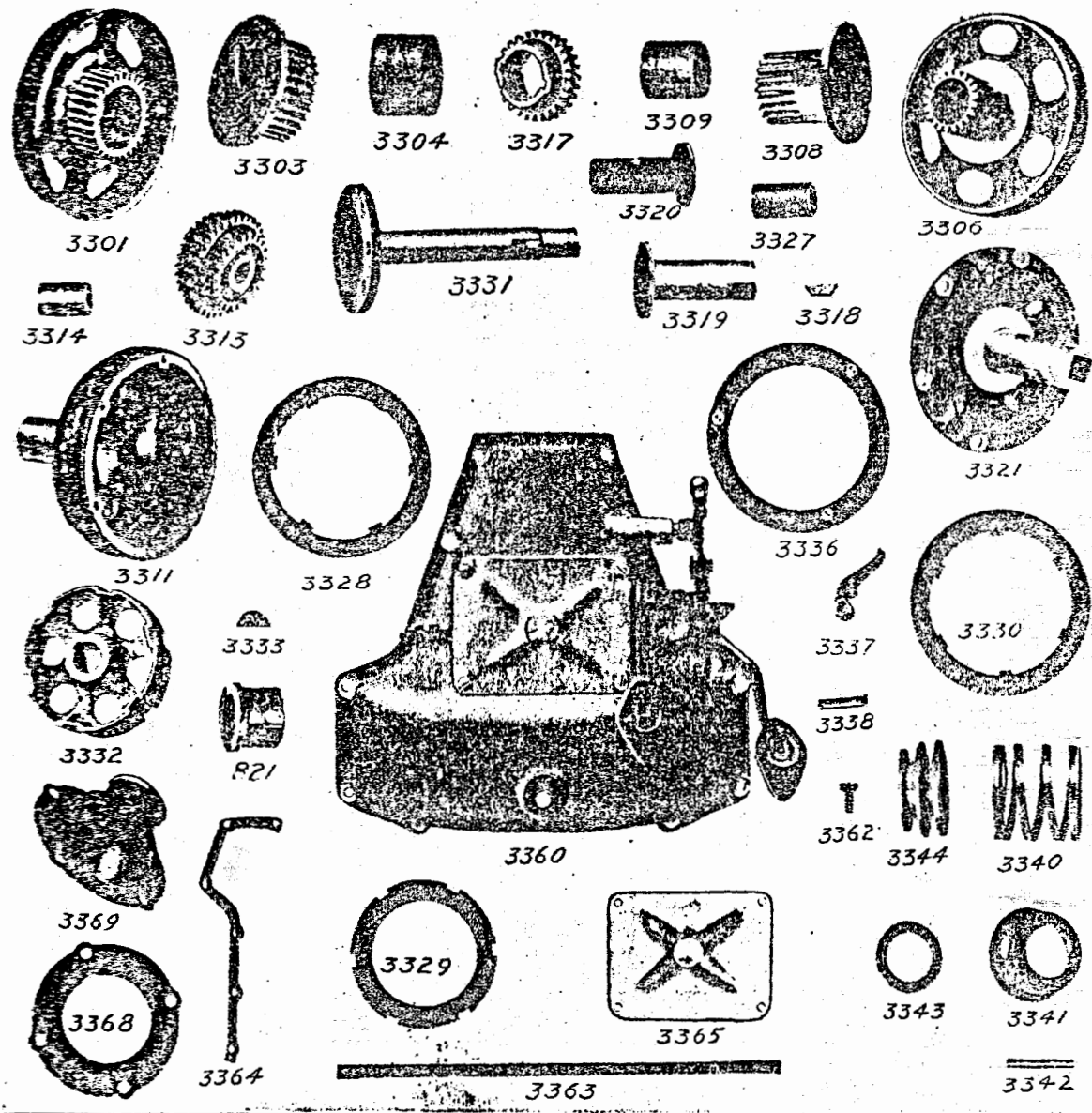


Plate 11—Transmission Parts

Transmission—Continued

Order by these Nos.	Description.	Price.	Code Word.	Factory No.
*3314	Transmission triple gear bushing	\$ 50	Tublabrat	716B
3314½	Transmission triple gear flanged bushing	50		
3315	Transmission triple gear shaft	50	Tublabriv	715
3316	Transmission triple gear riveting pin	05	Tublacens	720
3317	Transmission driven gear (27 teeth)	2 00	Tublacrim	713
3318	Transmission driven gear key	10	Tublapsar	714
3319	Transmission driven gear sleeve (on brake drum)	4 00	Tublapsi	710
*3320	Transmission driven gear sleeve bushing	60	Tublapdodo	754
3321	Transmission driving plate assembly (including clutch fingers)	8 00	Tubiaquad	749
3323	Transmission driving plate screw	10	Tublarm	731
3324	Transmission driving plate key	10	Tublatat	734
3225	Transmission driving plate rivet	03	Tublafine	736
3326	Transmission driving plate hub	3 00	Tublation	743
3327	Transmission driving plate bushing	50	Tublatur	724
3328	Transmission thrust plate (13 small) each	30	Tublatuss	727
3329	Transmission thrust plate (13 large) each	30	Tublavams	728
3330	Transmission distance plate	40	Tublavets	729
*3331	Transmission gear shaft	4 40	Tublebten	723B
*3332	Transmission clutch disc drum	3 00	Tublectory	725B
*3333	Transmission clutch disc drum key	10	Tubledder	726B
3334	Transmission clutch disc drum set screw	05	Tublefty	752
3336	Transmission clutch push ring	2 00	Tublegero	704
3337	Transmission clutch finger	50	Tublet	732B
3337½	Transmission clutch finger screw	05		756
3337¾	Transmission clutch finger washer	01		759
3338	Transmission clutch finger pin	10	Tublevaba	735B
3340	Transmission clutch spring	50	Tublevad	737
3341	Transmission clutch spring support	50	Tublevaen	738
3342	Transmission clutch spring thrust ring pin	10	Tubleveto	739
3343	Transmission clutch spring thrust ring	1 20	Tublevo	740
3344	Transmission clutch shift	2 00	Tubllicam	733

Transmission Cover				
3360	Transmission cover complete (includes three pedal assembly)	18 00	Tublloory	1563
3361	Transmission cover only	9 00	Tubllicutt	825B
3362	Transmission cover bolts (1½" long) each	05	Tubllicury	825B
3363	Transmission cover felt	10	Tubllicyrx	872
3364	Transmission cover gasket	15	Tubllicerty	885
3365	Transmission cover door	75	Tublidunx	1546A
3366	Transmission cover door gasket	10	Tubllicfon	1547B
3367	Transmission cover door screws (4) each	05	Tubllicgort	1564
3368	Universal ball cap (rear)	75	Tubllicfort	818

Order by these Nos.

**Transmission Cover—Continued**

Order by these Nos.	Description.	Price.	Code Word.	No.
*3369	Universal ball cap with bushing (front)	2 50	Tublfulfer	819B
3371	Universal ball cap bolt (13/16" long)	05	Tublolly	822B
3372	Universal joint ball cap bolt (1" long)	05	Tublhoggt	1538
3373	Universal ball cap bolt nut	03	Tublihurty	828
(Order following parts for machines below 2500.)				
723	Transmission shaft	4 40	Tublease	
725	Transmission disc drum	3 00	Tublebe	
726	Transmission disc drum key	10	Tublectar	
716	Triple gear bushing	50	Tublbrat	
712	Driven gear sleeve bushing (2) each	50	Tublaposis	

**Transmission Control—3 Pedal Type**

3400	Transmission clutch release ring (bronze)	\$ 1 50	Tublmitte	741
3401	Clutch lever	30	Tublmlxer	806B
3402	Clutch lever shaft (9 3/4" long)	25	Tublmoz	833B
3403	Clutch lever screw	10	Tublotty	1541
3404	Clutch lever screw nut	05	Tubloyal	1542
3405	Clutch lever pin	03	Tubluzerno	1554
3406	Clutch release fork—right	50	Tublucana	834
3407	Clutch release fork—left	50	Tublcid	894
3408	Clutch release fork key	05	Tubluctus	836
3409	Clutch release fork clamp screw	05	Tubluebat	835
3410	Clutch release fork clamp screw wire	02	Tubluro	837
3411	Clutch and reverse lever clevis pin	02	Tublumis	867
3413	Transmission bands (24 each)	1 20	Tublunase	838B
3414	Transmission band ear	20	Tubluteos	839
3415	Transmission band washer	02	Tubluxias	840
3416	Transmission band raybestos lining	50	Tublyro	1555
3419	Transmission band adjusting screw	15	Tubmacon	1533
3420	Transmission band adjusting screw nut (3/4" hole)	05	Tubmagical	1532
3421	Transmission band rivet (3/16" x 7/16") per doz.	05	Tubmarnas	842
3422	Transmission band rivet (3/16" x 5/16") per doz.	05	Tubmedial	843
3423	Transmission band rivet (3/32" x 1/2") per doz.	05	Tubmedios	844
3424	Transmission band rivet (3/32" x 7/32") per doz.	05	Tubmerge	845
3425	Transmission band spring	05	Tubmergin	841B
3426	Transmission band adjusting nut (7/16 x 20 th'd)	05	Tubmergus	851
3427	Slow speed shaft	30	Tubmerhuf	848B
3428	Slow speed notch	50	Tubmicky	829B
3429	Slow speed notch pin	03	Tubmidway	1560
3430	Slow speed shaft washer	05		1559
3432	Speed lever	40	Tubmiggot	853B
3433	Speed lever clevis pin	05	Tubmiss	898
3434	Reverse pedal	1.25	Tubmitoy	853B
3435	Brake and Reverse pedal shafts (2) each	20	Tubmixa	849B
3436	Brake and Reverse pedal support (2) each	30	Tubmiyave	1530

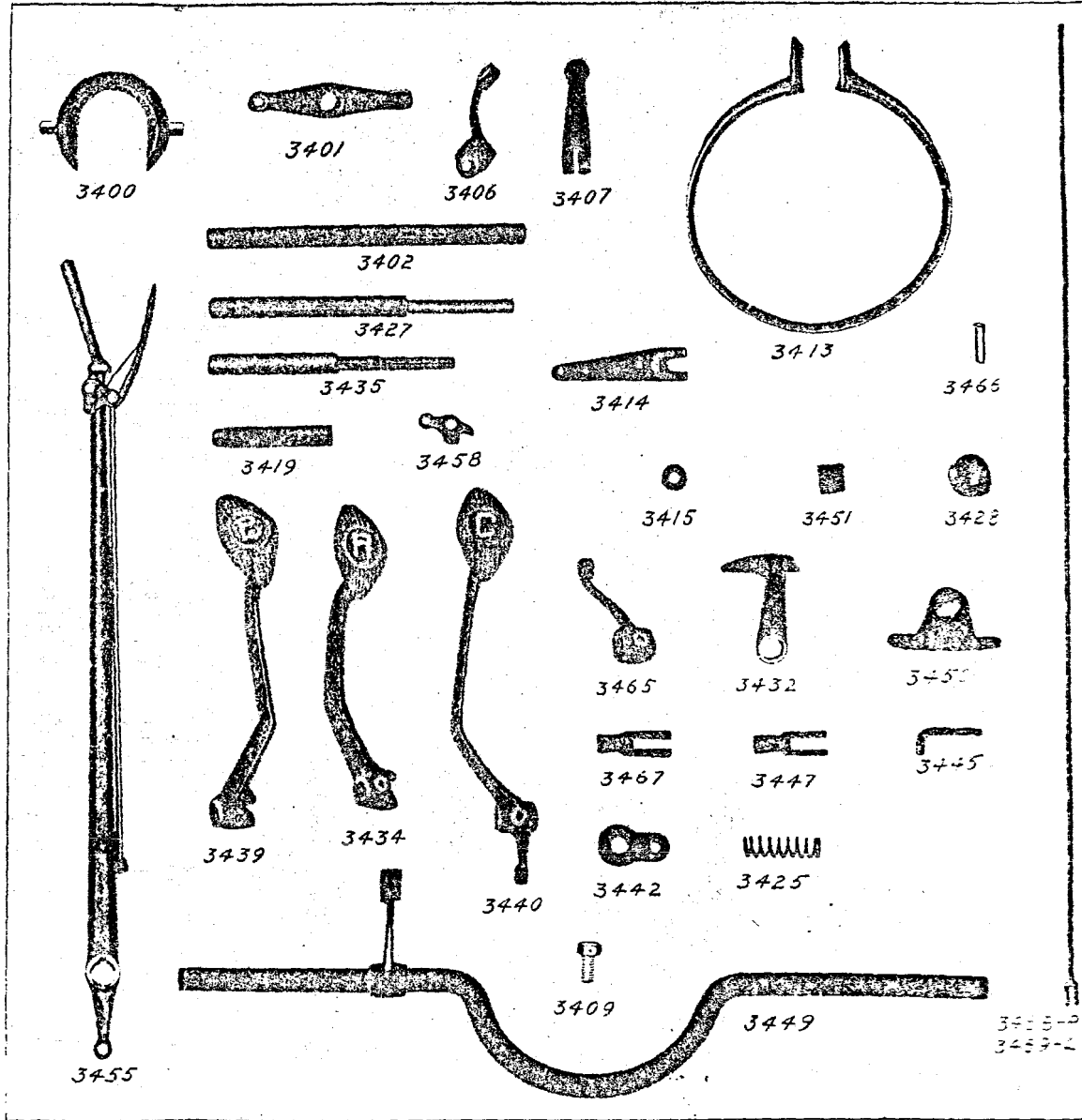


Plate 12—Control Parts

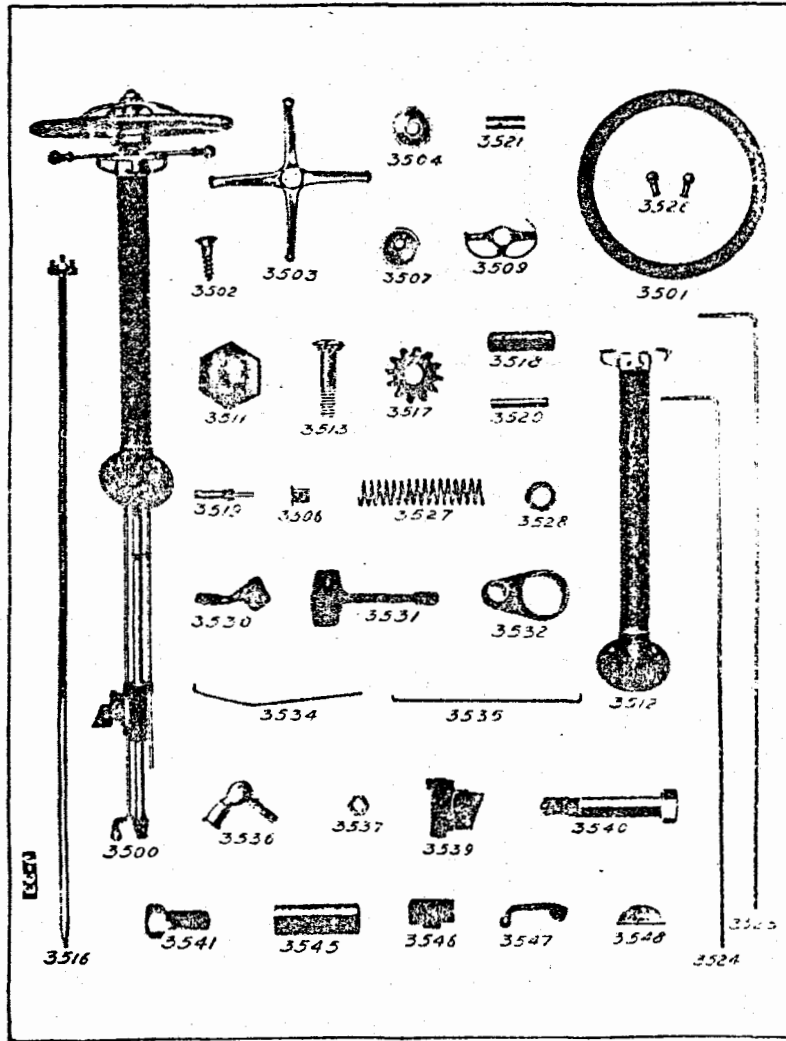


Plate 13—Steering Gear Parts

Transmission Control—Continued

Order by these Nos.	Description	Price.	Code Word.	Factory No.
3437	Brake and Reverse support bolts (2) each	10	Tubmotixn	1534
3438	Brake and Reverse support bolt nuts (2) each	05	Tubmoyben	1535
3439	Brake pedal	1 25	Tubmuddy	852B
3440	High and Slow speed pedal	1 25	Tubmuffatt	854B
3441	Pedal pins (3) each	05	Tubmugerxn	1553
3442	High and Slow speed pedal support	30	Tubmumavy	1531
3443	High and Slow speed pedal support bolt	05	Tubmuney	1536
3444	High and Slow speed pedal support bolt nut	05	Tubmvoilt	1537
3445	Slow speed connection	15	Tubmurton	1540
3446	Slow speed connection lock nut	02	Tubmyrgus	850
3447	Slow speed connection clevis	25	Tuboload	802
3448	Controller quadrant	60	Tuboraxi	303B
3449	Controller shaft with speed lever assembled	1 00	Tubozalt	867B
3450	Controller shaft bracket	25	Tubmurmer	311
3451	Controller shaft bracket felt	10	Tubmused	314
3452	Controller shaft bolt	05	Tubmutedo	315
3453	Controller shaft bracket bolt nut	03	Tubmutque	316
3455	Hand brake lever assembly	2 50	Tubnascel	1550
3456	Handbrake lever pin	02	Tubnatabo	866
3457	Hand brake lever key	05	Tubnatads	874
3458	Hand brake lever pawl	20	Tubaviga	875
3459	Hand brake lever pawl pin	05	Tubnavimo	876
3460	Handbrake lever pawl rod	15	Tubnectes	877
3462	Handbrake lever pawl lift (includes spring)	40	Tubnoctum	.873
3465	Hub brake lever (on controller shaft)	40	Tubnegart	864
3466	Hub brake lever pin	02	Tubnerons	865
3467	Hub brake lever clevis	25	Tubnerra	47
3468	Hub brake pull rod—right	45	Tubnervas	891B
3469	Hub brake pull rod—left	45	Tubnervo	1513
3470	Hub brake pull rod support—right	15	Tubnerzor	1367C
3471	Hub brake pull rod support—left	15	Tubnethin	1398C
3472	Hub brake pull rod support bolt (1" long)	05	Tubnexis	1399B
3473	Hub brake pull rod support bolt nut	02	Tubneyzal	1900

Steering Gear

3500	Steering gear assembly	20 00	Tubneuter	900
3501	Steering gear rim	1 60	Tubneutro	901
3502	Steering gear rim screw	05	Tubnixed	919
3503	Steering gear spider	1 60	Tuborno	902
3504	Steering gear cover	1 00	Tubostend	903
3505	Steering gear cover screw	05	Tuboval	919
3506	Steering gear cover bushing	25	Tubovtrae	914
3507	Steering gear internal gear case	1 50	Tuboxlce	904
3508	Steering gear case bushing	1 25	Tubpectin	905
3509	Steering gear quadrant	1 20	Tubpenne	906
3510	Steering gear quadrant pin	05	Tubperfor	907
3511	Steering gear wheel nut	20	Tubjetrol	913
3512	Steering gear tubing assembly (includes gear case, also lead and throttle rods)	8 00	Tubpsquat	940
3513	Steering gear tubing flange screw	10	Tubplnth	927
3514	Steering gear tubing flange screw nut	10	Tubplinos	928
3515	Steering gear tubing flange screw washer	05	Tublisse	925



Steering Gear—Continued

Order by these Nos.	Description	Price.	Code Word.	Factory No.
3516	Steering gear post	2 50	Tubpolar	915
3517	Steering gear pinions (3) each	50	Tubporan	916
3518	Steering gear pinion pin (3/8" x 1-1/16")	05	Tubprefer	917
3519	Steering gear drive pinion	1 00	Tubprior	911
3520	Steering gear driving pinion key	05	Tubquarto	909
3521	Steering gear pinion shaft bushing	30	Tubradend	912
3523	Steering gear post castle nut	05	Tubradle	951
3524	Throttle rod	50	Tubrados	933
3525	Lead rod	50	Tubralem	934
3526	Lead and throttle handle (rubber)	25	Tubrameal	918
3527	Lead throttle rod spring	10	Tubramoso	935
3528	Lead and throttle rod collar	10	Tubrasos	936
3529	Lead and throttle rod collar pin	05	Tubrasuro	937
3530	Lead rod lever	30	Tubraucid	946
3531	Throttle rod lever	30	Tubraucos	947
3532	Throttle rod guide	40	Tubraudad	938
3533	Throttle and lead lever pin	02	Tubray	948
3534	Commutator pull rod (14" long)	25	Tubrayater	1325B
3535	Carburetor pull rod (13-13/16" long)	20	Tubrayn	1329
3536	Lead lever ball and socket joint	30	Tubrayo	1326
3537	Lead lever ball and socket joint nut	03	Tubrayors	1327
3538	Carburetor pull rod adjustment	15	Tubregang	1904
3539	Steering post bracket with bushing	2 50	Tubregano	932
3540	Steering post bracket bolt (2 1/4" long)	20	Tubreglon	939
3541	Steering post bracket bolt (3/4" long)	10	Tubridebe	940
3542	Steering post bracket bolt nut	05	Tubridec	941
3544	Steering post bracket felt washer	10	Tubrigor	943
3545	Steering post bracket bushing (bronze)	1 00	Tubrigous	944
3546	Steering post bracket block	10	Tubrigum	945
3547	Steering gear ball arm	1 20	Tubrihort	929B
3548	Steering gear ball arm key	10	Tubrision	930

Body Parts—(Touring Car)

3601	Body bracket on body (front end)	10	Tubrogaor	1002
3601 1/2	Body bracket on body (center and rear)	10	Tubrob	
3602	Body bracket connecting bolt (1 1/2" long)	05	Tubroanus	1304
3603	Body bracket connecting bolt (25/32" long)	05	Tubrobnus	1305
3605	Body bracket connecting bolt nut (square)	05	Tubroine	1307
3606	Body bracket bolt nut (hexagon)	03	Tubrole	1001
3607	Tonneau carpet for touring car	2 50	Tubronde	1606
3607 1/2	Carpet for coupe	2 50	Tubrondel	
3608	Tonneau carpet fastener screw	05	Tubroleel	1602
3609	Tonneau door strap	35	Tubroste	1605
3610	Tonneau door strap clip screws	05	Tubroect	1600
3611	Tonneau door handle	60	Tubrufarm	1443
3612	Tonneau door handle screw	05	Tubrumax	1479
3613	Tonneau door lock—left	1 50	Tubrumahot	1442B
3614	Tonneau door lock—right	1 50	Tubrunult	1444B
3615	Tonneau door lock striker plate—left	30	Tubruntia	1445B
3616	Tonneau door lock striker plate—right	30	Tubrupter	1446B
3617	Tonneau door hinge assembly—right	1 00	Tubrusic	1632
3618	Tonneau door hinge assembly—left	1 00	Tubrutil	1633
3619	Tonneau door hinge pin	10	Tubruto	1012
3620	Tonneau heel board hinge	15	Tubsaline	1019
3621	Tonneau heel board latch	35	Tubsalsam	1020
3622	Tonneau heel board hinge screw	05	Tubsalsoe	1471
3623	Tonneau heel board latch screw	05	Tubsalsud	1067
3624	Front floor rubber matting	3 00	Tubsalt	1616
3626	Floor board (first)	35	Tubsanact	1096B
3627	Floor board (second)	40	Tubsanerz	1402B
3628	Floor board (third)	30	Tubsanorx	1404B

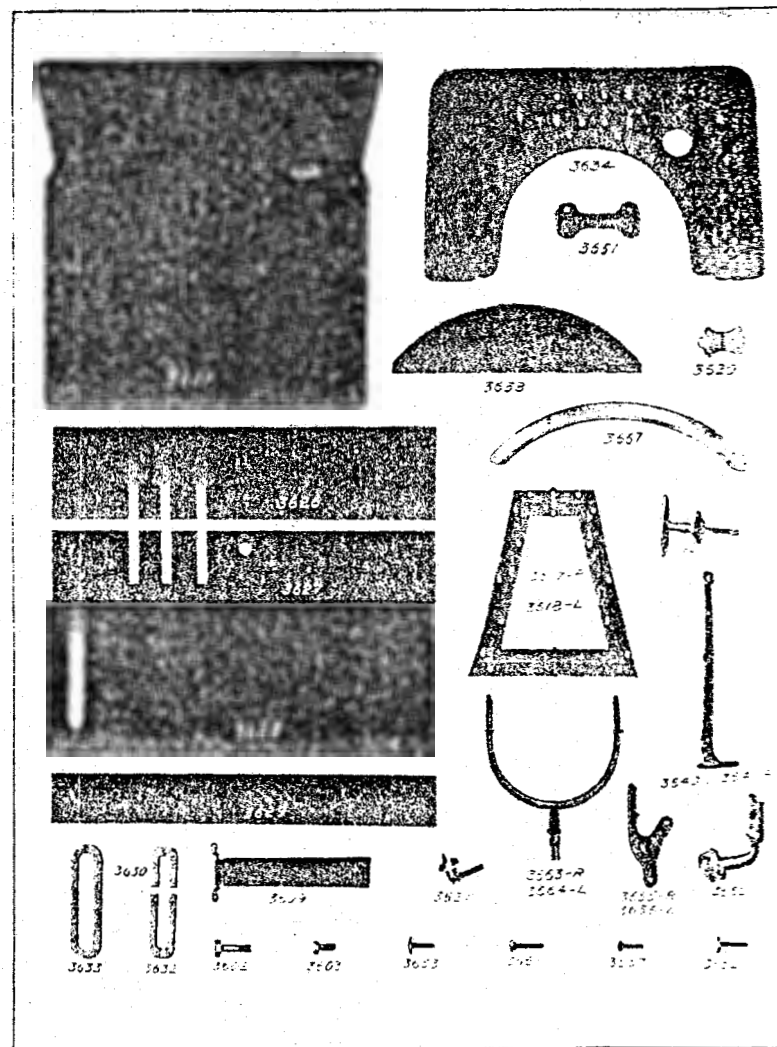


Plate 14—Floor Board and Dash, with Parts

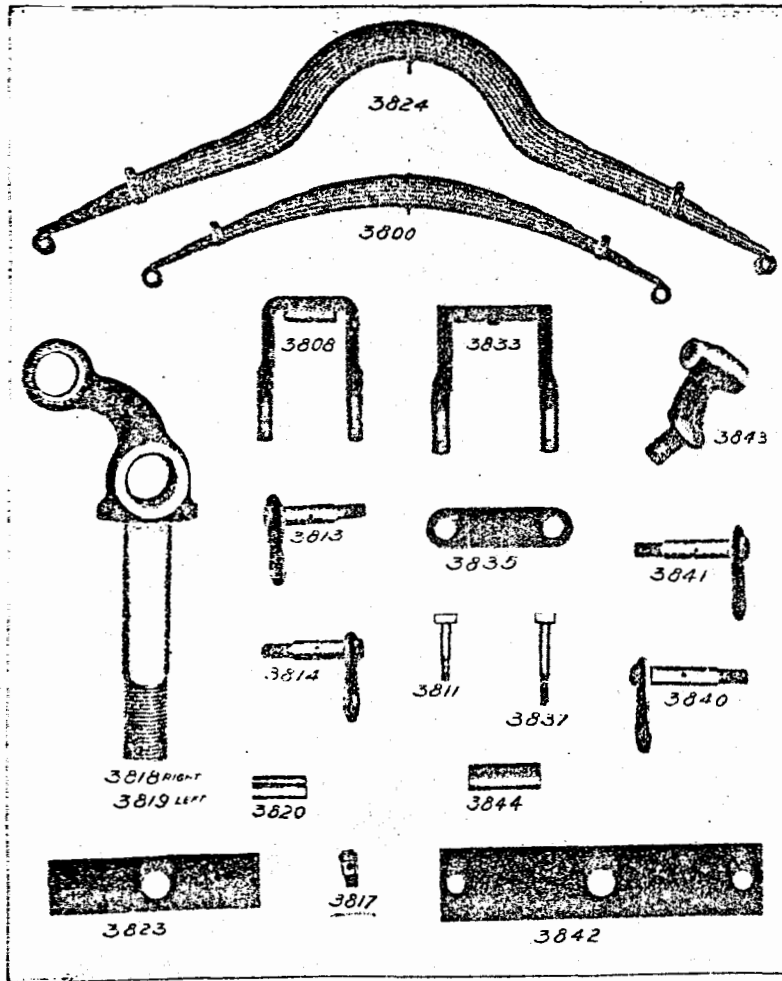


Plate 15—Springs and Parts

Body Parts—Continued

Order by these Nos.	Description	Price.	Code Word.	Factory No.
3629	Floor board (fourth)	35	Tubsatrat	1403B
3630	Floor board forward plate for pedals	50	Tubsayert	1400B
3631	Floor board plate screw	05	Tubscrima	1407
3632	Floor board rear plate for pedals	40	Tubscutld	1095B
3633	Floor board plate for side lever	35	Tubsduty	1094B
3634	Dash	6 00	Tubsdaylen	1091B
3635	Dash brass moulding	1 50	Tubsecutos	1063
3636	Dash brass moulding screw	02	Tubsequor	1064
3637	Dash moulding center screw (3/4" long)	05	Tubsequi	1623
3638	Dash shield	20	Tubseqvox	1097B
3639	Dash shield screw	02	Tubserat	1405
3640	Dash bracket (left)	50	Tubserite	1017
3641	Dash bracket (right)	50	Tubserved	1018
3642	Dash bracket bolt (on frame)	05	Tubservin	1028
3643	Dash bracket bolt nut	05	Tubsesta	1029
3645	Dash bracket top bolt	05	Tubsessle	1039
3646	Dash bracket lower bolt	05	Tubsessix	1032
3647	Dash bracket top bolt washer	02	Tubessor	1033
3648	Dash bracket lower bolt washer	02	Tubsetace	1034
3649	Dash bracket top bolt nut	03	Tubsessue	1035
3650	Dash bracket lower bolt nut	03	Tubsiccas	1036
3651	Dash to body bracket	15	Tubsidor	1489
3652	Dash to body bracket bolt (on body)	05	Tubsidunt	1490
3653	Dash to body bracket bolt (on dash)	05	Tubsfan	1491
3654	Dash to body bracket bolt nut	03	Tubsfifer	1492
3655	Oil lamp bracket—right (touring car)	40	Tubstform	1497
3656	Oil lamp bracket—left (touring car)	40	Tubstgn	1498
3657	Oil lamp bracket brass screw	05	Tubstgnal	1502
3658	Oil lamp bracket screw nut	05	Tubstgned	1608
3659	Oil lamp bracket screw washer	03	Tubstmlie	1627
3660	Tail lamp bracket (touring car)	25	Tubstimore	1613
3661	Tail lamp bracket bolt	05	Tubstomor	1614
3662	Tail lamp bracket bolt nut	05	Tubstipmo	1615
3663	Gas lamp bracket—right	1 00	Tubstipic	1301
3664	Gas lamp bracket—left	1 00	Tubstipunt	1348
3665	Gas lamp bracket nut	05	Tubstist	1302
3667	Front seat cushion for touring car	12 00	Tubstistia	1626
3670	Rear seat cushion for touring car	12 00	Tubstistor	1627
3667 1/4	Tourabout front seat cushion—right	6 00		
3667 1/2	Tourabout front seat cushion—left	6 00		
3670 1/4	Tourabout rear seat cushion—right	6 00		
3670 1/2	Tourabout rear seat cushion—left	6 00		
3671	Oil lamp bracket—right (town car)	1 00	Tubstisten	
3672	Oil lamp bracket—left (town car)	1 00	Tubstisdo	
3673	Oil lamp bracket—right (coupe)	1 00	Tubstisel	2200
3674	Oil lamp bracket—left (coupe)	1 00	Tubstismen	2201
3675	Tail lamp bracket (coupe)	50	Tubstiscog	

Springs

3800	Front spring (specify color)	6 00	Tubstisturn	332
3801	First leaf (main leaf)	1 25	Tubsold	354
3802	Second leaf	1 10	Tubsolld	355
3803	Third leaf	1 00	Tubsolled	356
3804	Fourth leaf	90	Tubsolzed	357
3805	Fifth leaf	75	Tubsolano	358
3806	Sixth leaf	60	Tubsolary	359
3807	Seventh leaf	40	Tubsolitus	360
3808	Front spring clip	25	Trbsolve	325B
3809	Front spring clip nut	05	Tubsolvin	327
3811	Front spring tie bolt	05	Tubsonaba	1362
3812	Front spring tie bolt nut	02	Tubsortit	1363
3813	Front spring hanger (wide flange)	50	Tubsparg	248

Springs—Continued

Order by these Nos.	Description	Price.	Code Word.	Factory No.
3814	Front spring hanger (narrow flange)	50	Tubstrunt	229
3815	Front and rear spring hanger nut	02	Tubsume	220
3817	Front and rear spring hanger oiler	15	Tubtender	267
3818	Front spring perch—right	1 00	Tubtenses	222
3819	Front spring perch—left	1 00	Tubterago	222½
3820	Front spring perch bushing (also used on spring)	20	Tubtereba	230
3821	Front spring perch nut	05	Tubterfue	242
3823	Front spring leather	10	Tubtevac	262
3824	Rear spring	14 00	Tubterit	333
3825	First leaf (main leaf)	2 60	Tubtera	361
3826	Second leaf	2 25	Tubtiendo	362
3827	Third leaf	2 00	Tubtiely	363
3828	Fourth leaf	1 75	Tubtilleza	364
3829	Fifth leaf	1 60	Tubtiliba	365
3830	Sixth leaf	1 50	Tubtilise	366
3831	Seventh leaf	1 30	Tubtillity	367
3832	Eighth leaf	1 10	Tubtimear	368
3833	Rear spring clip	25	Tubtinies	326
3834	Rear spring clip nut	05	Tubtituba	328
3835	Rear spring clip bar	10	Tubtive	329
3837	Rear spring tie bolt	05	Tubtly	1352
3838	Rear spring tie bolt nut	02	Tubtonic	1353
3840	Rear spring hanger (narrow flange)	50	Tubtorse	91
3841	Rear spring hanger (wide flange)	50	Tubtraca	91½
3842	Rear spring leather pad	15	Tubtrack	94
3843	Rear spring perch	60	Tubtracto	41
3844	Rear spring perch bushing (also used on spring)	20	Tubtraho	172
3845	Rear spring perch nut	05	Tubtrahir	174

Pump

551	Pump assembly	9 00	Tubtrifid
434	Pump body	4 00	Tubtrilo
435	Pump cover	2 00	Tubtrilem
443	Pump cover gasket	10	Tubtriste
452	Pump cover screw	05	Tubtripos
436	Pump fan	1 00	Tubtrude
437	Pump shaft	1 00	Tubturbin
454	Pump fan pin	01	Tubtuto
451	Pump packing nut (right hand)	25	Tubtutorm
451½	Pump packing nut (left thread)	25	Tubuculam
450	Pump thrust washer (steel)	10	Tubuculo
578	Pump drive gear and shaft	2 50	Tubularia
438	Pump drive gear only	1 00	Tubule
439	Pump drive gear shaft only	1 50	Tubulines
440	Pump drive gear shaft bushing (rear)	25	Tubulipap
453	Pump drive gear shaft bushing (front)	25	Tubuliped
577	Pump inlet connection assembly	1 00	Tubumdon
556	Pump inlet connection pet cock	30	Tubunectis
455	Pump inlet nut	30	Tubungor
507	Pump inlet hose (1¼ inside x 3¼)	30	Tubungual
555	Pump inlet hose clip	10	Tubungunt
456	Pump support screw	05	Tuburb
496	Radiator fan and shaft	2 00	Tuburbain
496½	Radiator fan only	1 00	Tuburpago
497	Radiator fan rivet	02	Tuburbana

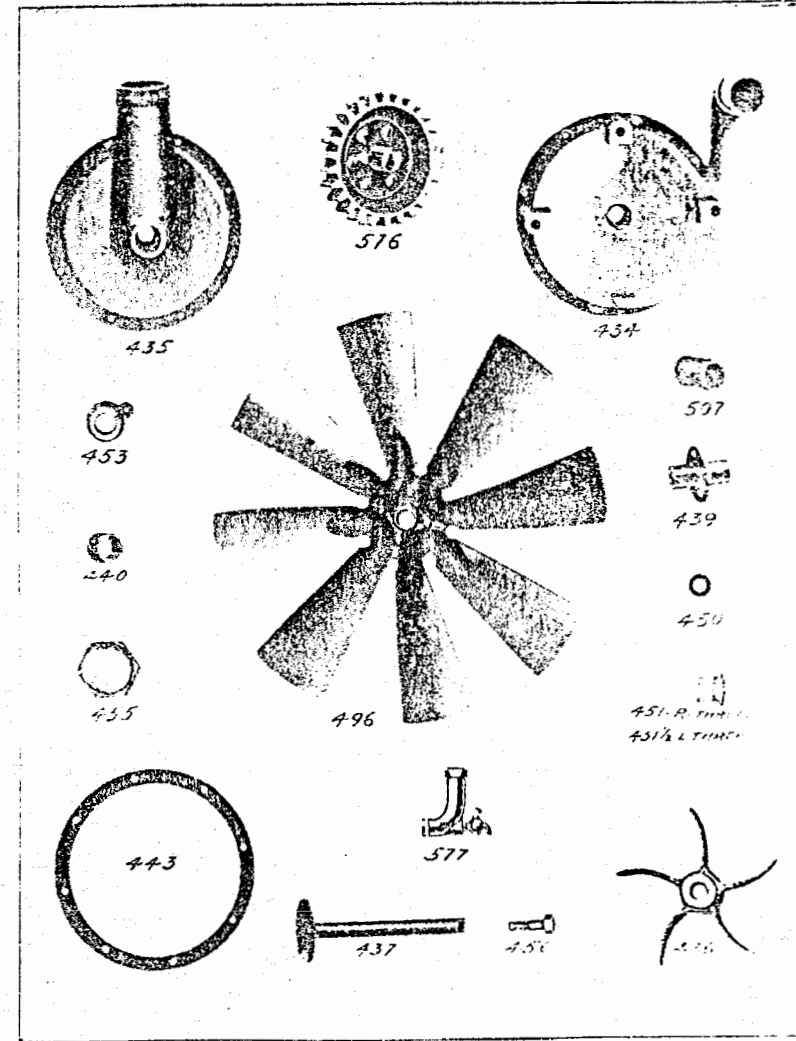


Plate 16—Parts for Pump Circulation Motor

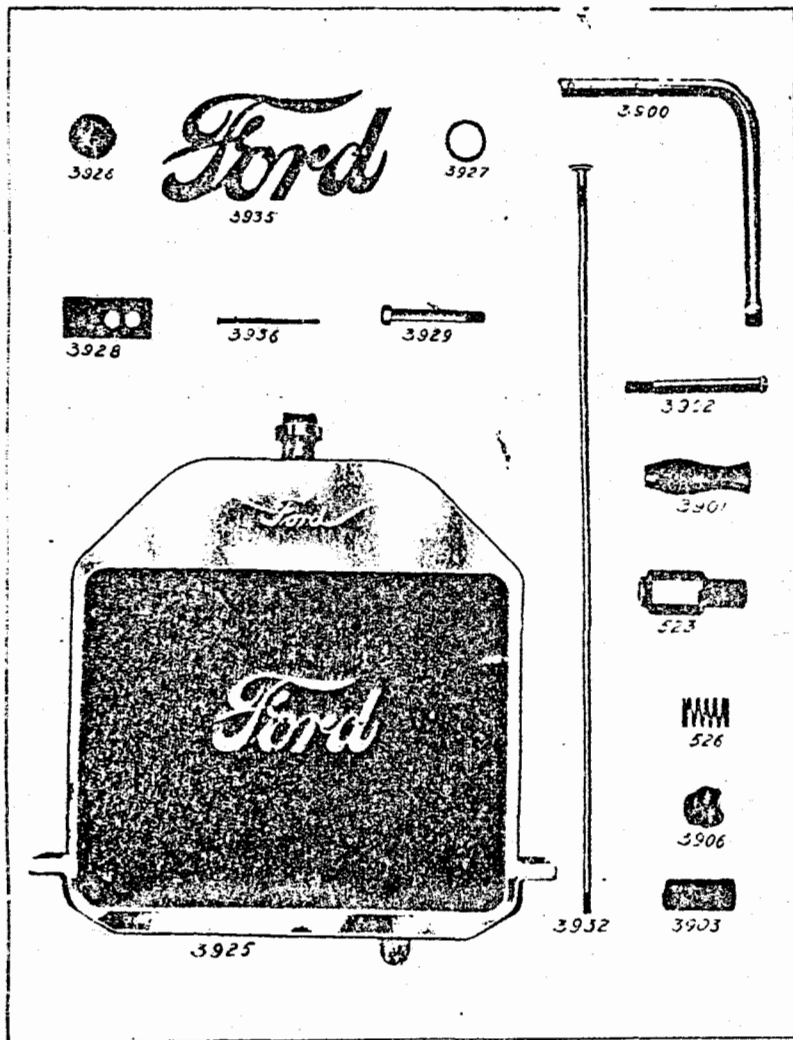


Plate 7—Radiator and Parts

Starting Crank

Order by these Nos.	Description	Price.	Code Word.	Factory No.
3900	Starting crank only	1 00	Tuburbigt	519B
3901	Starting crank handle (rubber)	40	Tuburbio	520
3902	Starting crank handle bolt	20	Tuburcnd	521
3903	Starting crank sleeve (steel tubing)	30	Tubutten	523B
3905	Starting crank ratchet pin (1 3/8" long)	05	Tubvonder	527B
3906	Starting crank ratchet	35	Tubvutigo	528B
3907	Starting crank strap	30	Tubvuzelt	1963
3908	Starting crank spring (brass)	05	Tubvoit	
519	Starting crank only	1 00	Tuburbial	
522	Starting crank handle bolt nut	05	Tuburimus	
523	Starting crank sleeve	50	Tuburran	
524	Starting crank collar pin	02	Tubvadem	
525	Starting crank collar	25	Tubvectab	
526	Starting crank spring	10	Tubvelout	
527	Starting crank ratchet pin	02	Tubven	
528	Starting crank ratchet	35	Tubvencas	

Radiator (Thermo-Syphon)

3925	Radiator—thermo—Syphon	28 00	Tubvectil	1100B
3926	Radiator cap	50	Tubvedon	1103B
3927	Radiator cap gasket (fibre)	05	Tubvenga	1117
3928	Radiator pad (leather)	05	Tubvendia	1105
3929	Radiator stud	05	Tubveno	1162
3930	Radiator stud spring	05	Tubvenol	1152
3931	Radiator stud nut	05	Tubvence	1154
3931 1/2	Radiator stud washer	05	Tubveld	1161
*3932	Radiator rod	25	Tubvensoct	1111B
3933	Radiator rod washer	05	Tubversod	1112
3934	Radiator rod nut	05	Tubverse	1113
3935	Name plate	40	Tubvert	1114
3936	Name plate bolt	05	Tubverter	1115
3937	Name plate bolt nut	02	Tubvertid	1116
3938	Name plate bolt washer	02	Tubvertra	1118
3939	Radiator outlet connection pipe (See motor plate)	50	Tubveruly	1121
3940	Radiator outlet connection cock	25	Tubvester	594
3943	Radiator strainer	20	Tubvexity	1119
3944	Radiator outlet connection hose (1 3/4" inside x 2 3/4")	30	Tubvexis	554
3945	Radiator outlet connection hose clip	10	Tubveyix	507B

Radiator (Pump Circulation)

(Order these parts for machines below 2500.)

1100	Radiator (pump circulation)	28 00	Tubvendra	
1111B	Radiator stay rod (state length)	25	Tubverif	

### Radiator Fan (Thermo-Syphon Motor)

Order by these Nos.	Description	Price.	Code Word.	Factory No.
3960	Fan and pulley assembly	2 00	Tubviah	619
3961	Fan Blades, each	25	Tubviabot	611
3962	Driven fan pulley (brass)	1 00	Tubviacod	618
3963	Drive fan pulley	30	Tubviacogi	602
3964	Fan belt	60	Tubviacux	609
3965	Fan tension spring	05	Tubviadox	610
3966	Fan shaft	25	Tubviadunt	603
3967	Fan bracket	40	Tubviafule	604
3968	Fan bracket bolt	15	Tubviafyt	605
3970	Fan shaft oiler assembly	20	Tubviagin	601
3971	Fan shaft oiler body	10	Tubviagore	598
3972	Fan shaft oiler body cap	10	Tubviayah	616

### Muffler

4025	Muffler assembly	2 50	Tubvesper	1200B
4026	Muffler head—intake	60	Tubvienes	1202B
4027	Muffler shell (outer)	30	Tubvinier	1203
4028	Muffler shell (middle)	25	Tubvinmes	1204
4029	Muffler shell (inner)	60	Tubvoade	1205
4030	Muffler rod only	10	Tubvocalt	1206
4031	Muffler rod nut	05	Tubvolaba	1207
4032	Muffler bracket—exhaust	30	Tubvoiem	1217
4033	Muffler bracket—intake	30	Tubway	1218
4034	Muffler bracket bolt	05	Tubworker	1210
4035	Muffler bracket bolt nut	03	Tubyaga	1211
4037	Long exhaust pipe	1 50	Tubygare	1214
4038	Muffler asbestos	15	Tubyhoti	1215
4039	Muffler asbestos bands (tin)	10	Tubyhauz	1216
4040	Rear muffler head with outlet pipe	75	Tubvienta	1221

### Hood

4050	Hood (specify color)	6 50	Tubyugot	1300
4051	Hood handle	25	Tubyugur	1314
4052	Hood clip	10	Tubzuar	1310
4053	Hood clip spring	05	Tubzuril	1311
4054	Hood clip washer	02	Tubcaro	1312
4056	Hood-board—left	40	Tubcantab	1339
4057	Hood-board—right	40	Tuccendan	1340
4058	Hood-board bolt	05	Tuccedase	1308
4059	Hood-board bolt nut	02	Tuccedbt	1309
4060	Hood support on dash	1 00	Tuccedemo	1334
4061	Hood support screw	01	Tucceden	1350

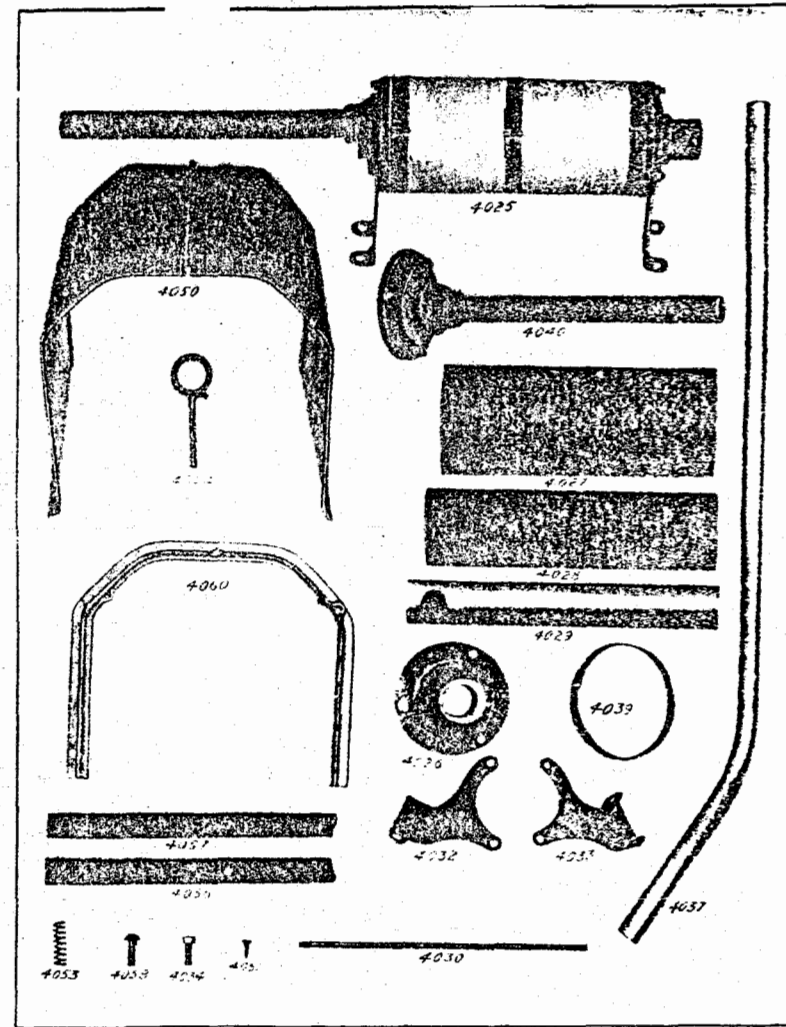


Plate 18—Hood, Muffler and Parts

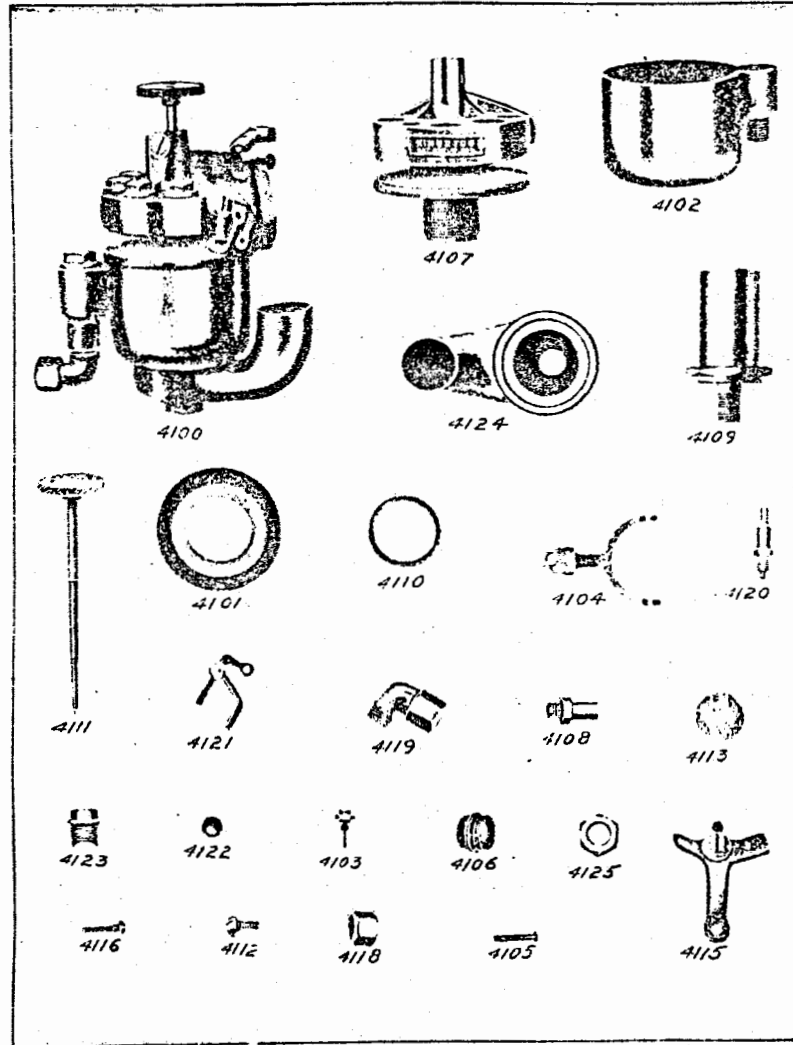


Plate 19—ingston Carburetor and Parts

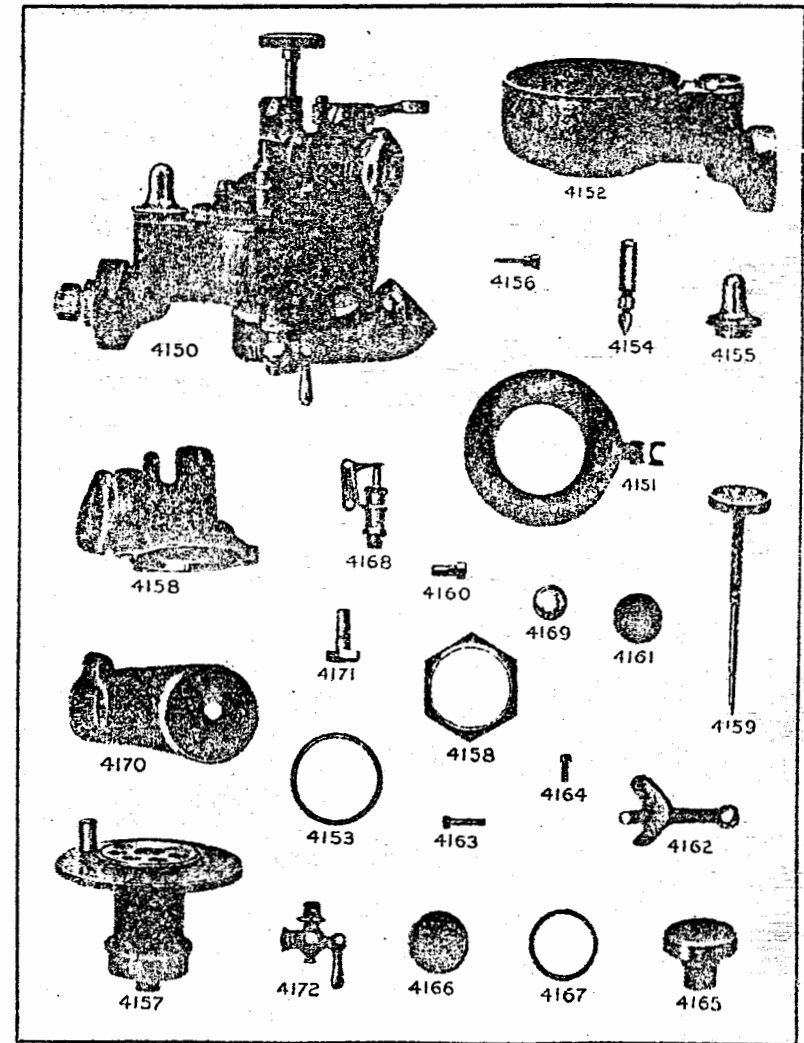


Plate 20—Holly Carburetor and Parts

Order by these Nos.	Description	Price.	Code Word.	Factory No.
4100	Carburetor complete	9 00	Tuccedia	553
4101	Float	80	Tuccediem	2101
4102	Float Chamber	2 00	Tuccedige	2102
4103	Gasoline valve	50	Tuccedipt	2103
4104	Gasoline valve operating lever	30	Tuccedoel	2104
4105	Gasoline valve operating lever shaft	10		
4106	Gasoline valve cap	30	Tuccedoxe	2106
4107	Mixing chamber	2 00	Tuccembet	2107
4108	Spray nozzle	30	Tuccende	2108
4109	Center chamber	1 00		
4110	Gasket for center member	20	Tuccesora	2110
4111	Gasoline needle valve	50	Tuccesao	2111
4112	Gasoline needle valve set screw	05	Tucceser	2112
4114	Throttle gate screw	05	Tuccesue	2114
4115	Throttle gate lever	30		
4116	Throttle gate adjusting screw	05	Tuechias	2116
4117	Throttle gate set screw	05	Tuechiers	2117
4118	Gasoline intake packing nut	15	Tuechione	2118
4119	Gasoline intake elbow	25	Tuechioso	2119
4120	Primer assembly	40	Tucciamel	2120
4121	Primer lever only	20		
4122	Bronze ball (for air regulation)	10	Tuccidart	2122
4123	Retainer cap for balls	40	Tuccidave	2123
4124	Constant air supply connection	1 00		
4125	Constant air supply connection lock nut	20	Tuccided	2125
4126	Carburetor adjusting rod head	15	Tuccidege	1356
4127	Carburetor adjusting rod bracket	30	Tuccigate	1357
4128	Carburetor adjusting rod head pin	05	Tuccilar	1358
4129	Carburetor adjusting rod	25	Tuccilet	1359
4131	Carburetor adjusting bracket screw	05	Tuccilote	1361
4132	Carburetor flange bolt	05	Tuccinate	1388
4233	Carburetor flange bolt nut	03	Tuccinet	1379
4134	Carburetor flange gasket	10	Tuccinda	1380

**Carburetor (Holly)**

4150	Carburetor complete	9 00	Tuedo
4151	Float with lever	60	Tueden
4152	Float chamber	2 00	
4153	Float chamber gasket	10	Tuedar
4154	Gasoline valve	60	Tuedag
4155	Gasoline valve guide	50	Tuedal
4157	Mixing chamber	2 00	Tuedanis
4158	Mixing chamber nut	40	Tuedolog
4159	Gasoline needle valve	50	Tuedos
4160	Gasoline needle valve set screw	15	Tuedit
4162	Throttle lever	25	
4163	Throttle gate lever adjusting screw	05	Tuedrov
4164	Throttle gate lever set screw	05	Tuedub
4165	Screen holder and screen	40	
4166	Gasoline intake screen	10	Tuedont
4167	Gasoline intake screen gasket	15	Tueduce
4168	Primer assembly	60	
4170	Constant air supply connection	1 00	
4171	Constant air inlet cup screw	10	Tuedux
4172	Carburetor drain cock	15	Tuedeys

**Special Tools**

1349	Hub Cap Wrench	\$ 25
1370	Disc Drum Puller Clamping Screw	10
1387	Adjustable Wrench	60
1902	Screw Driver	30
1903	Pliers	50
1904	Spark Plug Wrench	30

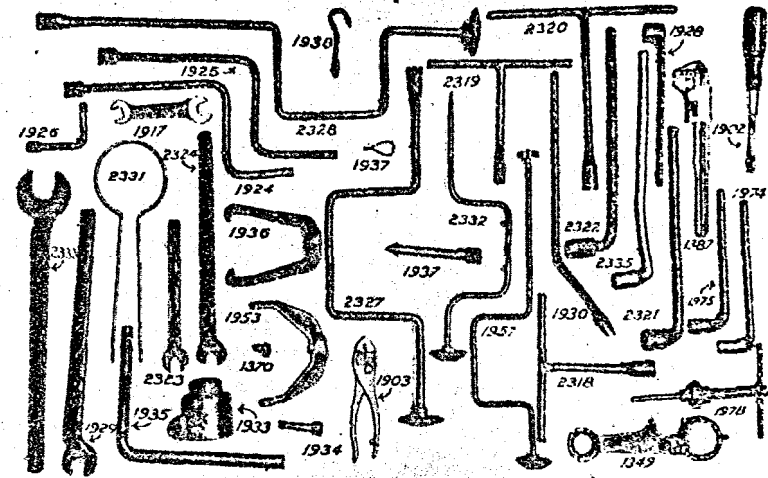


Plate 21—Special Tools

**Special Tools—Continued**

Order by these Nos.	Description	Price.
1917	Double End Wrench	30
1924	3/4" Socket Wrench	50
1925	Cylinder Head Cap Screw Wrench	50
1926	Piston Pin Set Screw Wrench	40
1927	Commutator Screw Driver	05
1928	Crank Shaft Bearing Nut Socket Wrench	40
1929	Ply Wheel Cap Screw Wrench	30
1930X	Valve Spring Lifter (Includes 1938)	75
1957	Valve Grinder	1 00
1933X	Rear Wheel Puller (Includes 1931-5)	1 50
1934	Rear Wheel Puller Cap Screw	15
1935	Rear Wheel Puller Screw	35
1936X	Cam Gear Puller (Includes 1937)	1 50
1937	Cam Gear Puller Screw	35
1938	Valve Spring Lifter Hook	30
1953X	Transmission Clutch Drum Puller (Includes 1370)	1 50
1974	Drive Shaft and Rear Axle Housing Stud Nut Wrench	40
1975	Rear Axle Housing Bolt Nut Wrench	50
1978	Valve Seat Reamer	2 50
2318	3/4" T Socket Wrench (Short)	50
2319	T Screw Driver for Cam Shaft Set Screw	50
2320	3/4" T Socket Wrench	50
2321	Special L Socket Wrench for Crank Shaft Bearing Bolt Nut	50
2322	3/4" L Socket Wrench	50
2323	3/4" Open End Wrench	35
2324	Connecting Rod Clamp Screw Wrench	40
2327	3/4" Brace Socket Wrench (Short)	50
2328	3/4" Brace Socket Wrench (Long)	60
2331	Piston Ring Squeezer	25
2332	Magnet Screw Brace Screw Driver	50
2333	Large Cam Gear Lock Nut Wrench	40
2335	Cylinder Head Bolt L Socket Wrench	50





**Coil (Kingston)**

Order by these Nos.	Description	Price	Code Word
4200	Coil complete .....	30 00	Tuccinger
4201	Adjusting screw with platinum point .....	75	Tuccingos
4202	Vibrator spring with platinum point .....	60	Tuccinico
4203	Vibrator hammer .....	10	Tuccinide
4204	Adjusting screw lock spring .....	10	Tuccinifl
4205	Adjusting screw bracket .....	40	Tuccinliy
4209	Coil box complete .....	5 00	Tuccinon
4210	Coil box cover .....	80	Tuccinore
4211	Coil box cover fastener—lower .....	15	Tuccivus
4211 1/2	Coil box cover fastener—upper .....	15	Tuccives
4212	Coil bracket .....	50	Tuccivut
4214	Coil bracket stud nut .....	05	Tucclades
4215	Coil units, each .....	6 00	Tucclamea
4216	Coil unit fastener and vibrator bar .....	25	Tucclamo
4217	Coil unit fastener thumb nuts, each .....	05	Tuccalvio
4218	Vibrator unit cover (fibre) .....	15	Tuccollad
4219	Switch plug .....	25	Tuccullo
4220	Switch lever .....	25	Tuccomba
4221	Switch cover .....	25	Tuccombe
4222	Switch base assembly .....	75	Tuccomed
4223	Hexagon nuts on bottom of coil, each .....	05	Tuccosta
4224	Springs for terminal connections, each .....	10	Tuccosita
4225	Terminal binding posts with spring .....	20	Tuccosorm
4226	Terminal binding post porcelain .....	15	Tuccosos
4227	Terminal binding post thumb nut .....	05	Tuccotrin
4228	Terminal binding post hexagon nut .....	05	Tuccour

**Coil (Kingston) New Style**

4230	Coil Box Cover .....	80
4231	Coil Box Complete .....	5 00
4232	Coil Unit .....	6 00
4233	Switch Key .....	15
4234	Vibrator Spring with Platinum Point .....	60
4235	Adjusting Screw with Platinum Point .....	75

**Coil (Jacobson-Brandon)**

4250	Coil complete .....	30 00	Tuccor
4251	Adjusting screw .....	25	Tuccuraw
4252	Vibrator spring with platinum point .....	1 00	Tuccurum
4253	Cross-bar with platinum point .....	75	Tuccurry
4254	Coil box complete .....	6 00	Tuccurflow
4255	Coil box cover .....	80	Tuccurbob
4256	Coil units each .....	6 00	Tuccurdo
4257	Switch complete .....	2 00	Tuccurgo
4258	Switch plug .....	25	Tuccurven
4259	Switch lever .....	35	Tuccurvul
4260	Switch cover .....	35	Tuccurbal

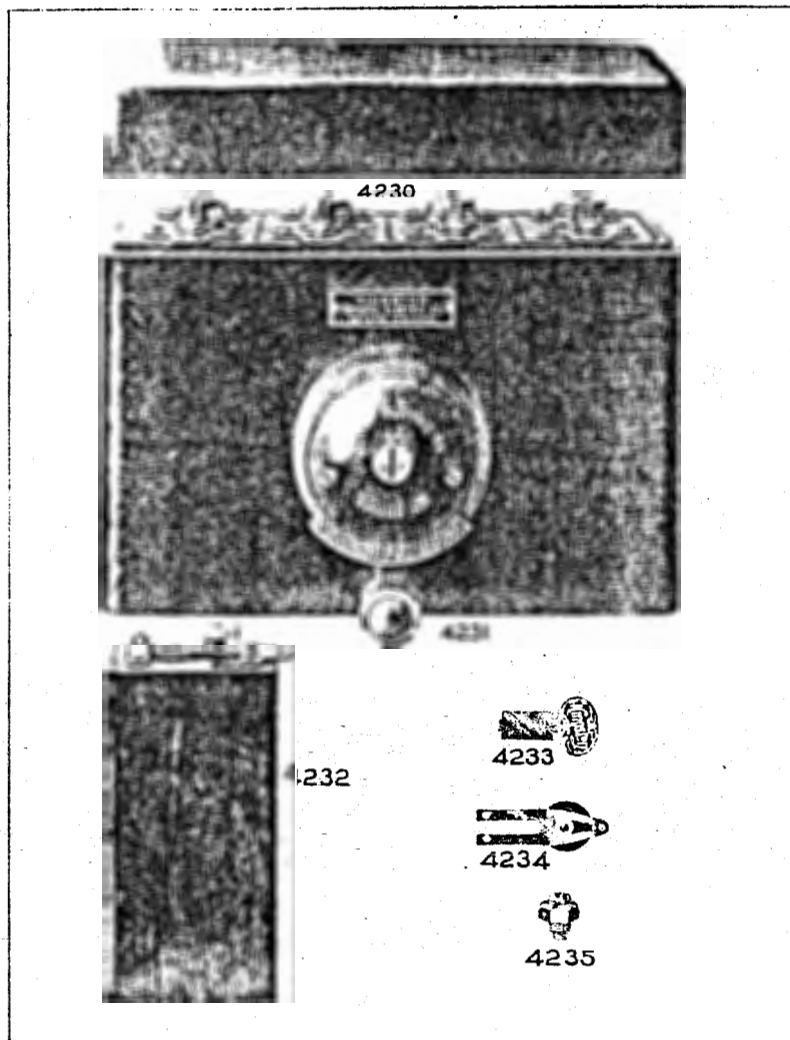


Plate 22—Coil (Kingston) New Style

Wiring				Roadster Body					
Order No.	Description	Price.	Code Word.	Factory No.	Order by these Nos.	Description	Price.	Code Word.	Factory No.
4350	Spark plug wire (Cyl. No. 1)	30	Tuccurer	1365	4402	Front seat with cushions	\$ 40 00	Tudor	
4351	Spark plug wire (Cyl. No. 2)	30	Tuccubine	1366	4403	Front seat cushions, per pair	12 00	Tudel	
4352	Spark plug wire (Cyl. No. 3)	25	Tuccubius	1375	4403 1/4	Front seat cushion—right	6 00	Tudelor	
4353	Spark plug wire (Cyl. No. 4)	20	Tuccubuer	1376	4403 1/2	Front seat cushion—left	6 00	Tudeled	
4354	Spark plug wire terminal	05	Tucculeny	1381	4404	Rumble seat with cushion	10 00	Tudlet	
4355	Commutator wires with loom	1 00	Tuccumbat	1951	4405	Rumble seat cushion	4 00	Tudhog	
4356	Commutator wire with terminal, each	10	Tuccumal		4406	Rumble seat lock	80	Tudhog	
4357	Commutator wire terminal (coil end)	03	Tuccumbir	1385	4408	Front floor rubber matting	3 00	Tudhave	
4358	Commutator wire loom only	60	Tuccursen	1378	4409	Rear floor rubber matting	3 00	Tudy	
4359	Commutator wire loom support	05	Tuccursor	1390					
4360	Magneto wire to coil	25	Tuccurux						

Cotter Pins

3/32 x 1" Cotter pins	1/8 x 3/4" Cotter pins
3/32 x 3/4" Cotter pins	1/16 x 3/4" Cotter pins
3/32 x 1/2" Cotter pins	1/16 x 1/2" Cotter pins
1/8 x 1" Cotter pins	

Price, each	01
Price, per dozen	05
Price, per gross	25